

Patricia L. Less

BLACK HAWK COUNTY RECORDER

PAUL HELLAND

Paul H. Helland, 1107 Technology Parkway, Cedar Falls, Iowa 50613-6951, (319)-266-0161

UNITED STATES PUBLIC LAND SURVEY CORNER CERTIFICATE
OFLAND SURVEY MONUMENTS SITUATED IN SECTION NO. 25, TOWNSHIP NO. 88 NORTH, RANGE
NO. 14 WEST OF THE FIFTH PRINCIPAL MERIDIAN, BLACK HAWK COUNTY, IOWA.

PREVIOUSLY RECORDED IN BOOK _____, PAGE _____.

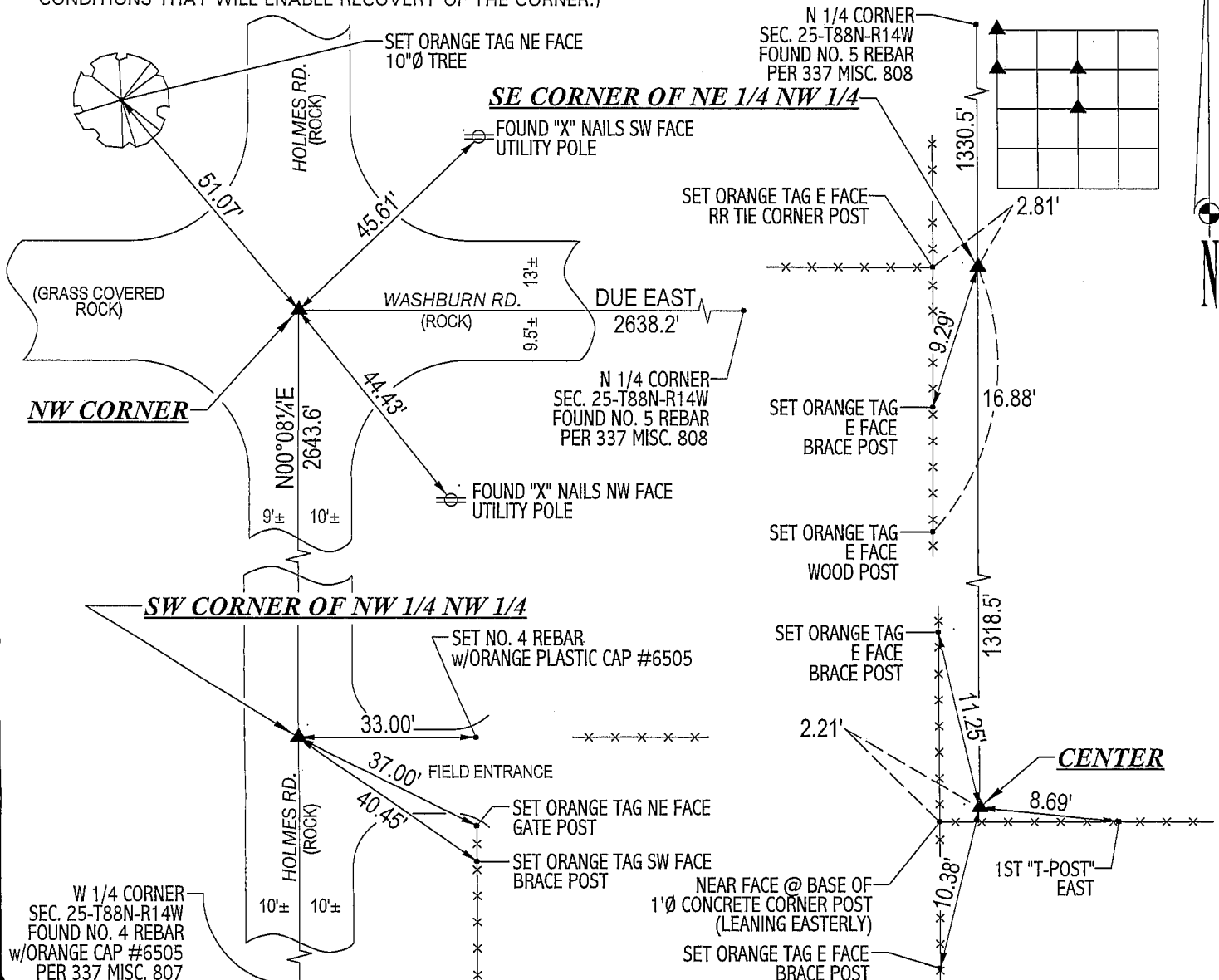
(SHOW REASON FOR PREPARING THIS CERTIFICATE, THE EVIDENCE AND DETAILED PROCEDURES USED IN ESTABLISHING THE
CORNER POSITIONS AND MONUMENTATION FOUND OR PLACED.)

MONUMENT DESCRIPTION AND REMARKS:

NO CORNER CERTIFICATES ON FILE. SURVEY DONE IN NW 1/4 OF SEC. 25-T88N-R14W.

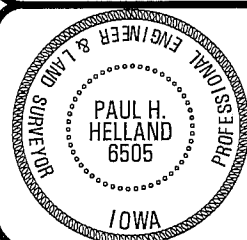
- NW CORNER: FOUND NO. 5 REBAR w/PINK FLAGGING CORRESPONDING TO BLACK HAWK ENGINEER REFERENCE TIES & PLATS OF SURVEY RECORDED IN 275 MISC. 567 & 3212 MISC. 978. CORNER IS 0.2' DEEP.
- SW CORNER OF NW 1/4 NW 1/4: 1/4 1/4 FENCE RUNNING EAST IS IN SAME POSITION AS PER WPA CHAINING NOTES DATED 10/11/1938. SET NO. 4 REBAR w/ORANGE PLASTIC CAP #6505 ON STRAIGHT LINE BETWEEN NW CORNER & W 1/4 CORNER & IN LINE w/SAID FENCE EAST.
- SE CORNER OF NE 1/4 NW 1/4: SET NO. 4 REBAR w/ORANGE PLASTIC CAP #6505 ON STRAIGHT LINE BETWEEN N 1/4 CORNER & CENTER & IN LINE w/FENCE RUNNING WEST.
- CENTER: FOUND NO. 5 REBAR w/RED CAP #12088 AS PER PLATS OF SURVEY RECORDED IN 337 MISC. 803 & FEE BK #2003 30548.

PLAN VIEW

(SHOW A MINIMUM OF THREE REFERENCE TIES TO DURABLE PHYSICAL OBJECTS, RELEVANT MONUMENTS AND PHYSICAL
CONDITIONS THAT WILL ENABLE RECOVERY OF THE CORNER.)**HELLAND ENGINEERING & SURVEYING, LTD.**
1107 Technology Parkway
Cedar Falls, Iowa 50613-6951
(319)-266-0161

(00.00') - RECORDED AS

FILE NAME: 03-278CC.DRG

I hereby certify that this land surveying document was prepared
and the related survey work was performed by me or under my
direct personal supervision and that I am a duly licensed Land
Surveyor under the laws of the State of Iowa.*Paul H. Helland 9/8/03*Paul H. Helland
License Number 6505
My license renewal date is December 31, 2003.
All pages or sheets are covered by this seal except:

LIST CORNERS TO BE INDEXED

CORNER	SECTION	TOWNSHIP	RANGE
NW CORNER	25	88N	14W
SW CORNER	25	88N	14W
NW 1/4 NW 1/4			
SE CORNER	25	88N	14W
NE 1/4 NW 1/4			
CENTER	25	88N	14W

Rec