

UNITED STATES PUBLIC LAND SURVEY CORNER CERTIFICATE

OF

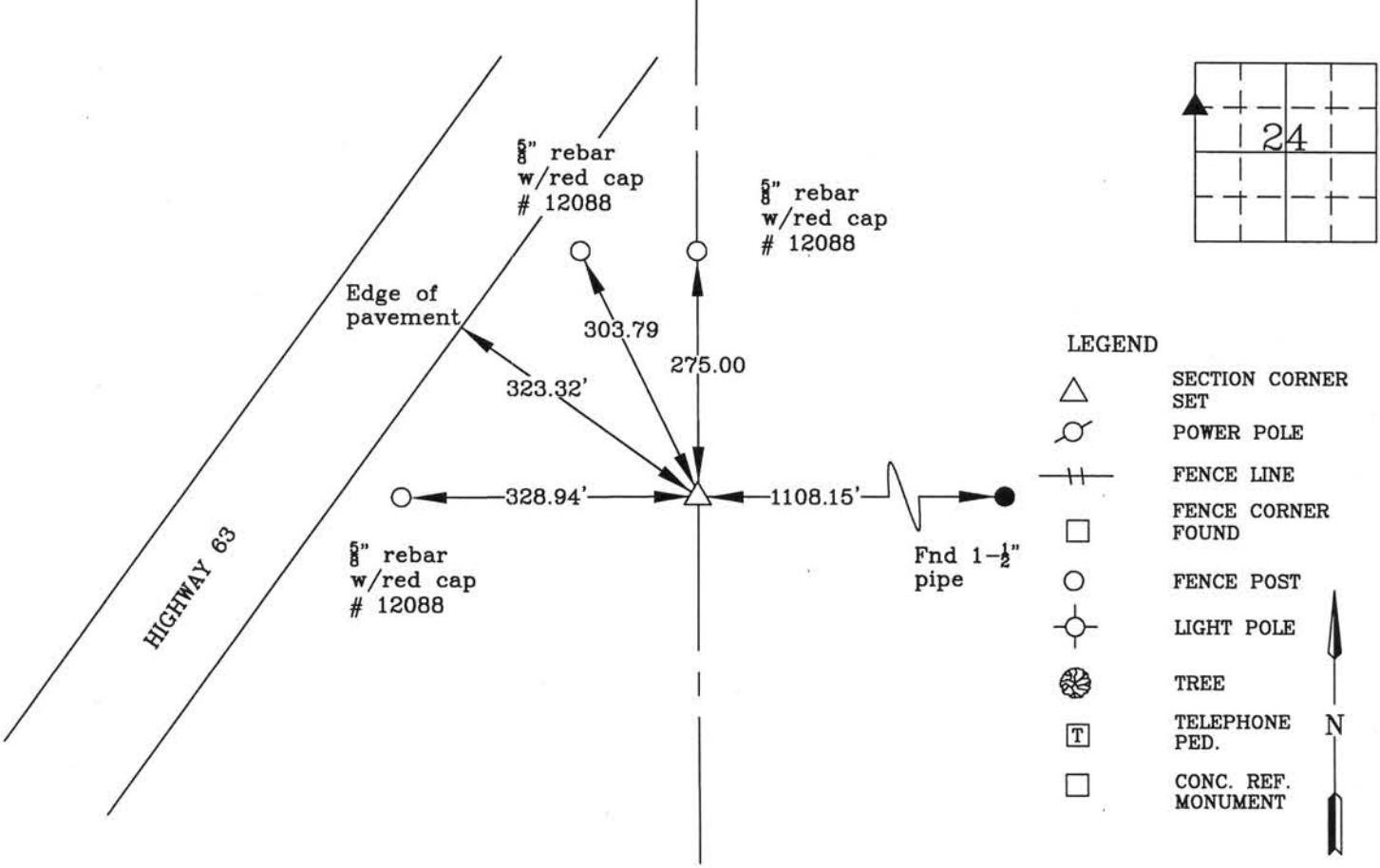
Land Survey Monuments situated in Section 24, Township 88 N, Range 14 W, of the Fifth Principal Meridian, Black Hawk County, Iowa
Previously recorded in Book N/A, Page .

Show reason for preparing this certificate, the evidence and detailed procedures used in establishing the corner positions and monumentation found or placed.)

Monument Description and Remarks: SW Cor. of the NW Qtr. of the NW Qtr.
The South line of the North One-half of Northwest Quarter was established by found monuments at the the Southern corners of a parcel described in LD 549 575. This line was extended to intersect the line between the NW Cor. and West Qtr. Cor. of 24-88-14. A 5" rebar with red cap # 12088 was set at this postion. No Corner Certificate Previously Recorded

PLAN - VIEW

(Show a minimum of three reference ties to durable physical objects, relevant monuments and physical conditions recovery of the corner.)



I hereby certify that this land surveying document was prepared and the related survey work was performed by me or under my direct personal supervision and that I am a duly licensed Land Surveyor under the laws of the State of Iowa.



Wendell J. Lupkes 2-4-14
WENDELL J. LUPKES, L.S.
License number 12088
My license renewal date is December 31, 2014
Pages or sheets covered by this seal: 1

List Corner to be Indexed

Corner	Section	Twp	Range
SW Corner	24	88 N	14 W
NW Qtr.			
NW Qtr.			



VJ Engineering
1501 Technology Parkway
Cedar Falls, Iowa - 319-266-5829

SECTION CORNER
REFERENCE TIES

Scale	NONE
drawn by	MAK
date	6/26/09

(7.00)