



Doc ID: 004693460001 Type: GEN
Kind: CORNER
Recorded: 01/25/2012 at 10:56:46 AM
Fee Amt: \$7.00 Page 1 of 1
Black Hawk County Iowa
JUDITH A MCCARTHY RECORDER

File 2012-00013732

WAYNE CLAASSEN ENGINEERING AND SURVEYING, INC.
P.O. BOX 898 WATERLOO, IOWA 50704-0898

PHONE: (VOICE) 319-235-6294
(FAX) 319-235-0028

UNITED STATES PUBLIC LAND SURVEY CORNER CERTIFICATE

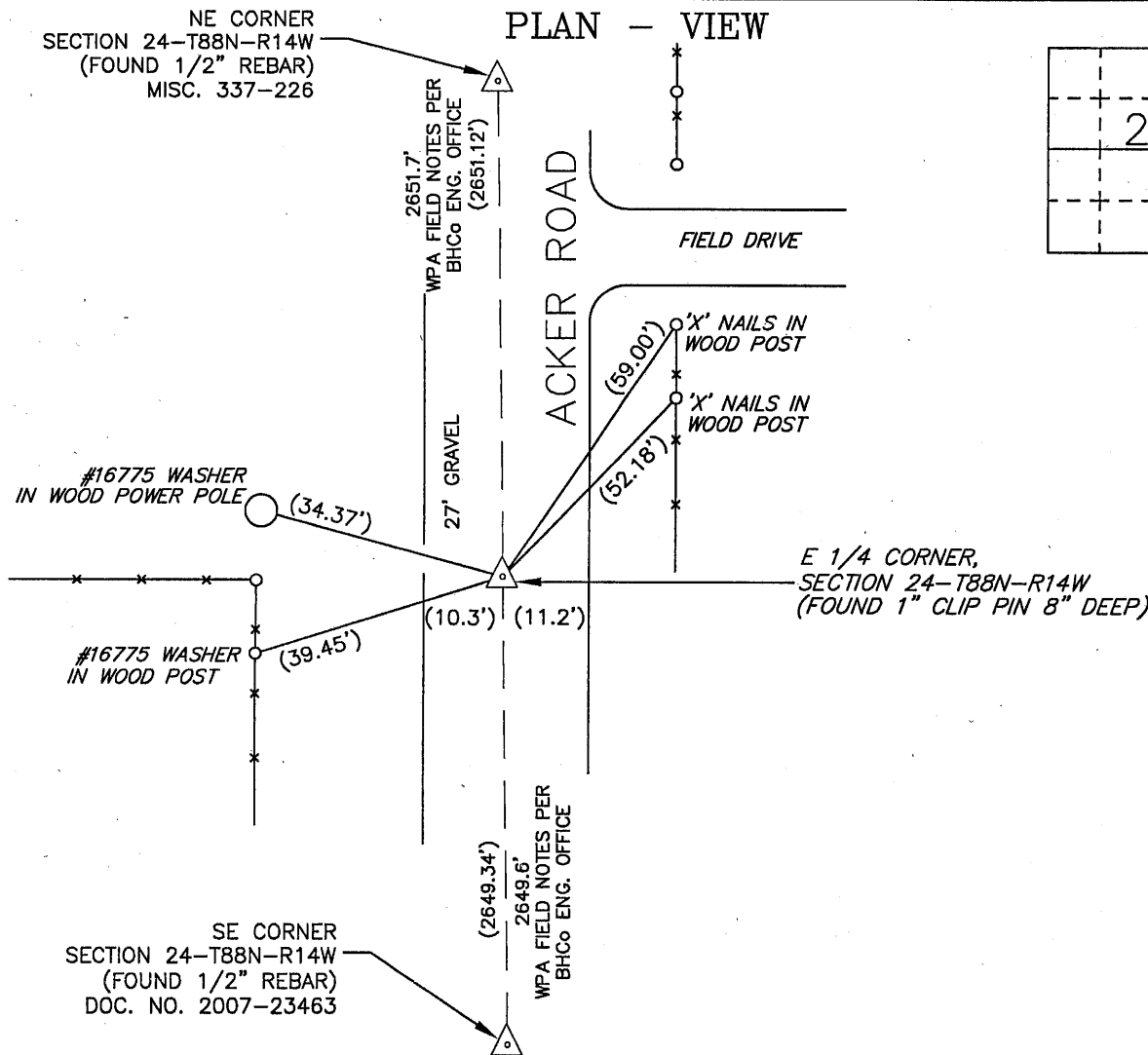
(FOUND 1" CLIP PIN 8" DEEP)

Land Survey Monuments situated in Section 24, Township 88 North, Range 14 West, of the Fifth Principal Meridian, Black Hawk County, Iowa.

Previously recorded in _____ in County Recorder's Office.
(book, page, document number, etc.)

Monument Description and Remarks

The following note was found as per WPA notes found in Black Hawk County Engineer's office: "found granite stone 10"x7"x4" lowered evidence and set CM on top 12" underground." This note dated October 3, 1938. Searched area and found no CM. Found 1" clip pin 8" deep that reasonably matched ties from above notes. This certificate was filed because there is no certificate on file.



BK 695-15

I hereby certify that this land surveying document was prepared and the related survey work was performed by me or under my direct personal supervision and that I am a duly Licensed Land Surveyor under the laws of the State of Iowa.

Signature: _____
David L. Scheil, L.S.

Date: JAN 18, 2012 Lic. No. 16775

Pages or Sheets Covered by this Seal: THIS SHEET ONLY.

My license renewal date is December 31, 2012

SEAL

List Corners to be Indexed

Corners	Section	Twp	Range
E 1/4 CORNER,	24	88 N	14 W
W 1/4 CORNER,	19	88 N	13 W

(1.00)