

ENV WAYNE CLAASSEN ENGINEERING AND SURVEYING INC

WAYNE CLAASSEN ENGINEERING AND SURVEYING, INC.
P.O. BOX 898 WATERLOO, IOWA 50704-0898
PHONE: (VOICE) 319-235-6294
(FAX) 319-235-0028

UNITED STATES PUBLIC LAND SURVEY CORNER CERTIFICATE

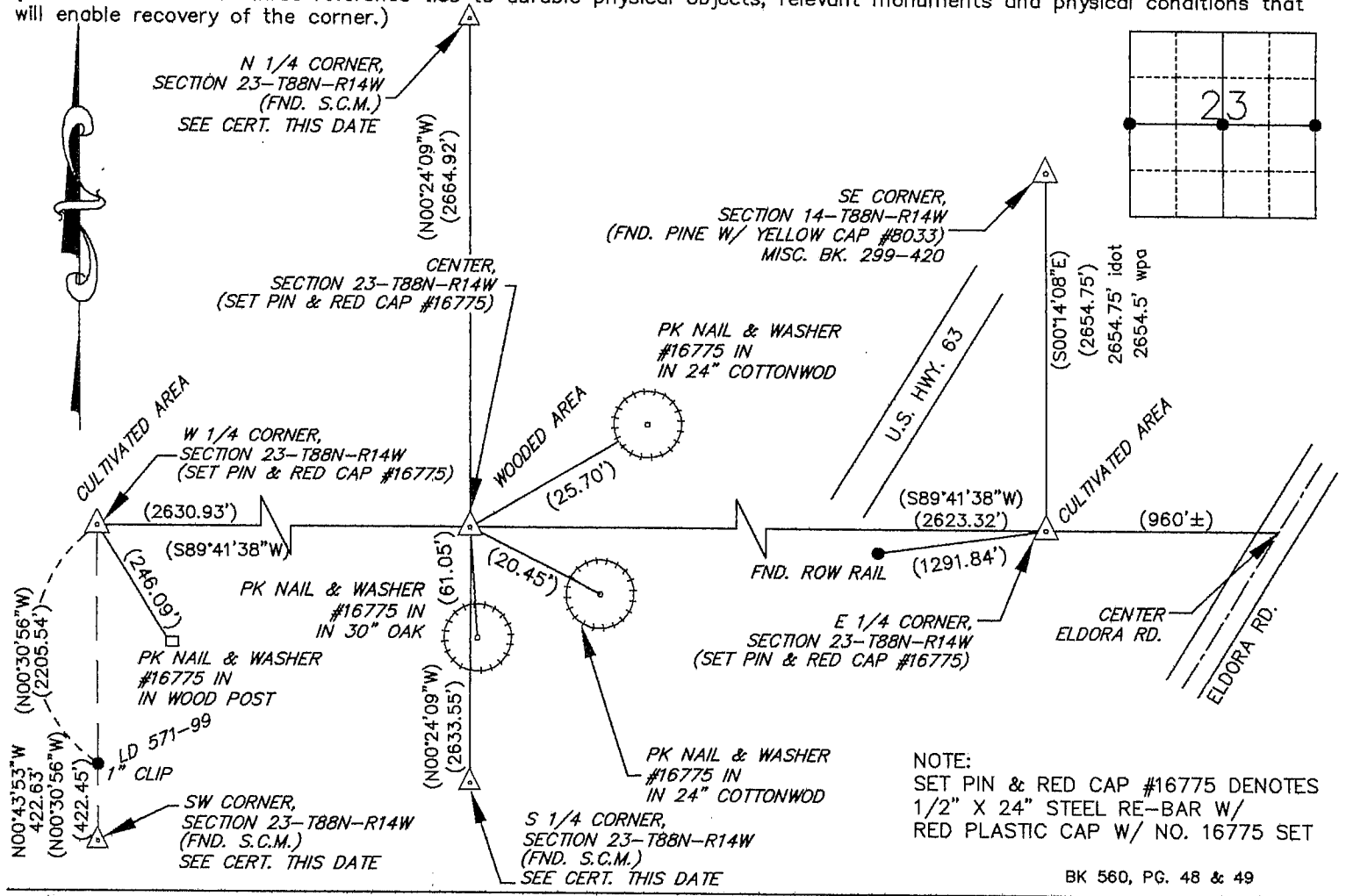
Land Survey Monuments situated in Section 23, Township 88 North, Range 14 West, of the Fifth Principal Meridian, Black Hawk County County, Iowa.
Previously recorded in N/A (book, page, document number, etc.) in County Recorder's Office.

(Show reason for preparing this certificate, the evidence and detailed procedures used in establishing the corner positions and monumentation found or placed.)

Monument Description and Remarks E 1/4 Corner: No corner certificate on file. Found posts on E/W crop line. Mr. Greiman, local land owner, testified that the said section corner existed by these post. We dug and probed a 5' radius area down to about a 4' depth and found flagging but no monument. Set pin and red cap #16775 in this area as per IDOT ties.
W 1/4 Corner: No corner certificate on file. From SW corner of said section and found 1" clip pins as per legal description in LD 571-099 in BHC Recorder's Office, calculated position of said corner. We searched an area up to 25' from corner and probed down about 4' but found no monument. Set pin and red cap #16775 as per caculated position.
Center: No corner certificate on file. Set pin & red cap #16775 at intersection of opposite 1/4 corners.

PLAN - VIEW

(Show a minimum of three reference ties to durable physical objects, relevant monuments and physical conditions that will enable recovery of the corner.)



I hereby certify that this land surveying document was prepared and the related survey work was performed by me or under my direct personal supervision and that I am a duly Licensed Land Surveyor under the laws of the State of Iowa.

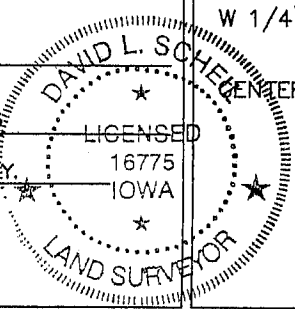
Signature: David L. Schell
David L. Schell, L.S.

Date: APRIL 20, 2006 Lic. No. 16775

Pages or Sheets Covered by this Seal: THIS SHEET ONLY.

My license renewal date is December 31, 2006

SEAL



List Corners to be Indexed

| Corners | Section | Twp | Range |
|---------------|---------|------|-------|
| E 1/4 CORNER, | 23 | 88 N | 14 W |
| W 1/4 CORNER, | 23 | 88 N | 14 W |
| CENTER, | 23 | 88 N | 14 W |