

PROOF FILED FOR RECORD APR 21, 2006, AT 4:00 P. M. FEE 1-5.00-1.00/

COMPARED

Patricia S. Liss

BLACK HAWK COUNTY RECORDER

ENV WAYNE CLAASSEN ENGINEERING AND SURVEYING INC

WAYNE CLAASSEN ENGINEERING AND SURVEYING, INC.
P.O. BOX 898 WATERLOO, IOWA 50704-0898PHONE: (VOICE) 319-235-6294
(FAX) 319-235-0028

UNITED STATES PUBLIC LAND SURVEY CORNER CERTIFICATE

Land Survey Monuments situated in Section 23, Township 88 North, Range 14 West, of the Fifth Principal Meridian, Black Hawk County County, Iowa.Previously recorded in N/A in County Recorder's Office.
(book, page, document number, etc.)

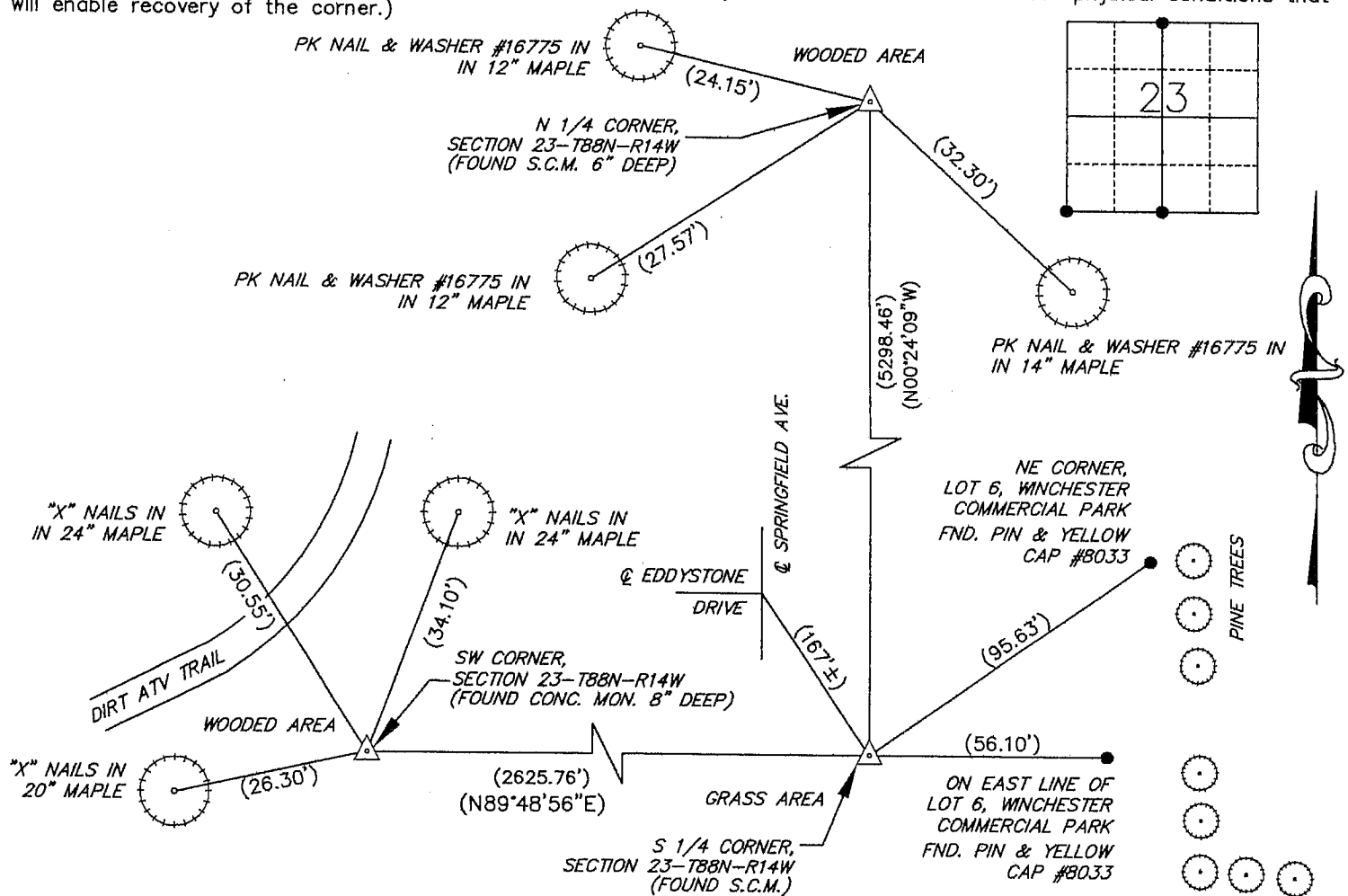
(Show reason for preparing this certificate, the evidence and detailed procedures used in establishing the corner positions and monumentation found or placed.)

Monument Description and Remarks

SW Corner: No corner certificate on file. Found concrete monument 8" deep as per IDOT ties.S 1/4 Corner: No corner certificate on file. Found S.C.M. as per ties on Final Plat Winchester AdditionN 1/4 Corner: No corner certificate on file. Found S.C.M. as per survey in Misc. Bk. 314-332, BHC Recorder's Office.

PLAN - VIEW

(Show a minimum of three reference ties to durable physical objects, relevant monuments and physical conditions that will enable recovery of the corner.)



BK 560, PG. 42, 43 & 48

I hereby certify that this land surveying document was prepared and the related survey work was performed by me or under my direct personal supervision and that I am a duly Licensed Land Surveyor under the laws of the State of Iowa.

Signature: David L. Scheil
David L. Scheil, L.S.Date: April 20, 06 Lic. No. 16775Pages or Sheets Covered by this Seal: THIS SHEET ONLY.

My license renewal date is December 31, 2006

SEAL

List Corners to be Indexed

Corners	Section	Twp	Range
S 1/4 CORNER,	23	88 N	14 W
SW CORNER,	23	88 N	14 W
N 1/4 CORNER,	23	88 N	14 W

