

Misc
INDEX
MARGIN
PROOF
COMPARE

12150

BLACK HAWK COUNTY IOWA: SS

Filed for record Dec 23, 1996 at

4:00 P.M. and recorded in Book 323

of Misc Page 400.

Patricia S. Liss

Recorder

Fee 1-5.00/

WAYNE CLAASSEN ENGINEERING AND SURVEYING, INC.
P.O. BOX 898 WATERLOO, IOWA 50704-0898

PHONE: (VOICE) 319-235-6294
(FAX) 319-235-0028

UNITED STATES PUBLIC LAND SURVEY CORNER CERTIFICATE

Land Survey Monuments situated in Section 22, Township 88N, Range R14W, of the Fifth Principal Meridian, BLACK HAWK County, Iowa.

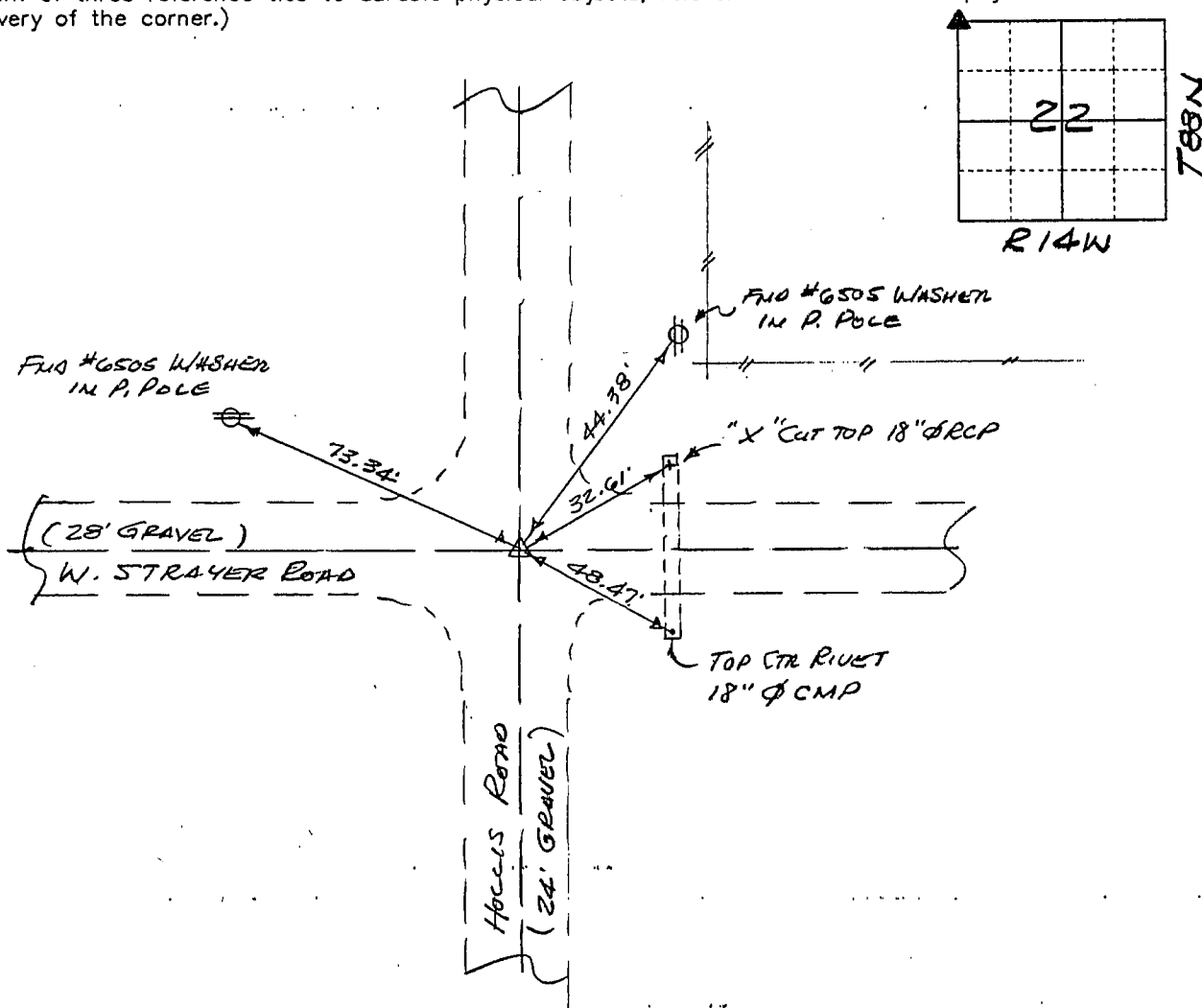
Previously recorded in N/A in County Recorder's Office.
(book, page, document number, etc.)

(Show reason for preparing this certificate, the evidence and detailed procedures used in establishing the corner positions and monumentation found or placed.)

Monument Description and Remarks NW CORNER FOUND 5/8" Ø REBAR 3" DEEP IN GRAVEL PER B.H. COUNTY TIES.

PLAN - VIEW

(Show a minimum of three reference ties to durable physical objects, relevant monuments and physical conditions that will enable recovery of the corner.)



432-18

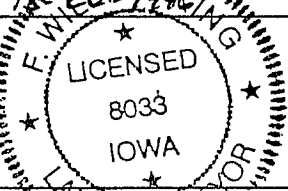
I hereby certify that the survey work was completed and this certificate was prepared by me or under my direct personal supervision and that I am a duly licensed land surveyor under the laws of the state of Iowa.

Signature: *F. William King*

(Name of surveyor printed:) F. WILLIAM KING

Date: 12/26/96 Lic. No. 8033

SEAL



List Corners to be Indexed

Corners	Section	Twp	Range
NW	22	88N	14W

BOOK 323 PAGE 400