

HELLAND ENGINEERING AND SURVEYING

Jeffrey P. Helland, 1107 Technology Parkway, Cedar Falls, Iowa 50613-6951, (319)-266-0161

# UNITED STATES PUBLIC LAND SURVEY CORNER CERTIFICATE OF

LAND SURVEY MONUMENTS SITUATED IN SECTION NO. 22, TOWNSHIP NO. 88 NORTH, RANGE  
NO. 14 WEST OF THE FIFTH PRINCIPAL MERIDIAN, BLACK HAWK COUNTY, IOWA.

PREVIOUSLY RECORDED IN \_\_\_\_\_.

(SHOW REASON FOR PREPARING THIS CERTIFICATE, THE EVIDENCE AND DETAILED PROCEDURES USED IN ESTABLISHING THE  
CORNER POSITIONS AND MONUMENTATION FOUND OR PLACED.)

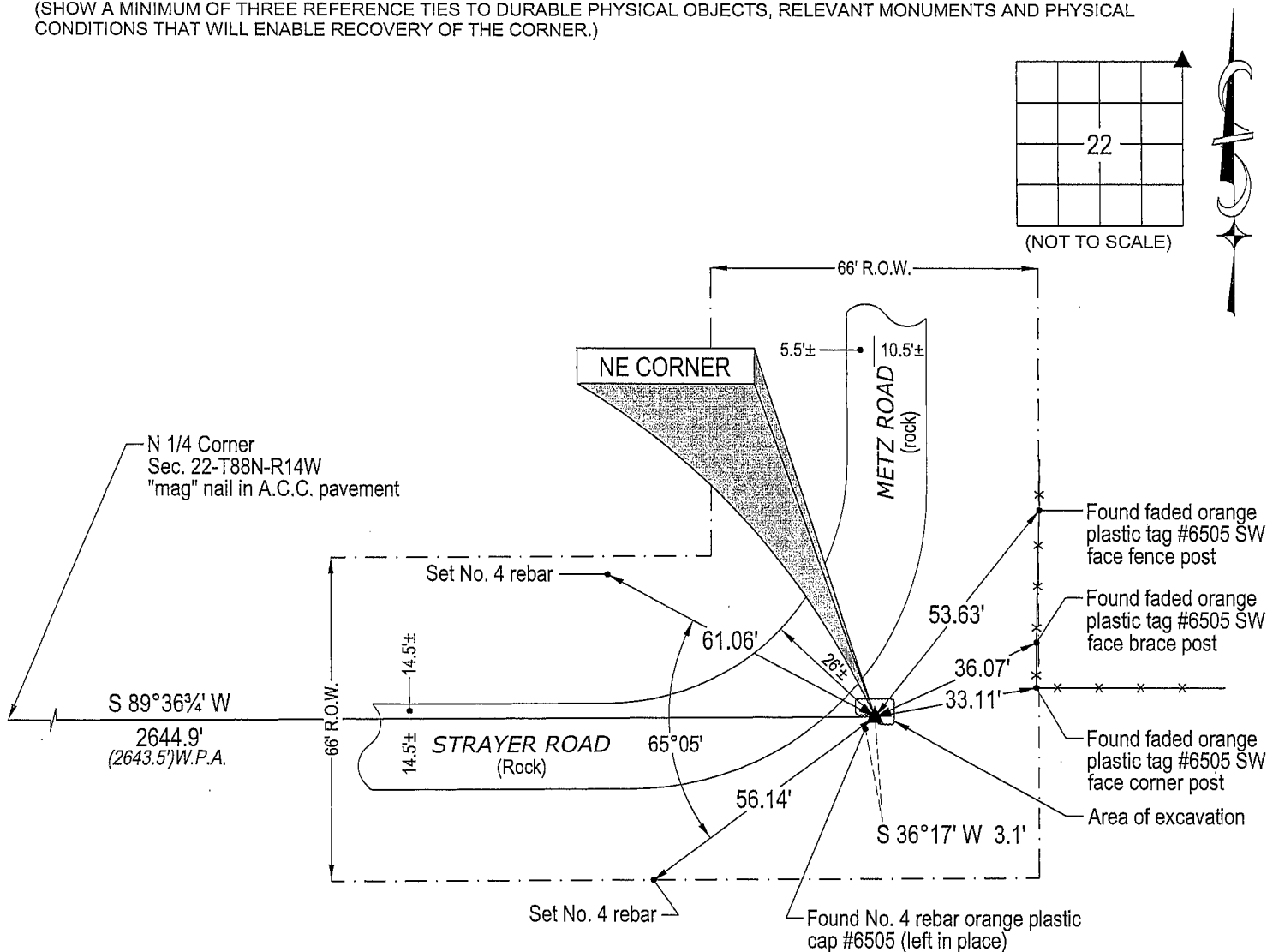
## MONUMENT DESCRIPTION AND REMARKS:

No corner certificate on file. Survey completed in the NE 1/4 of Sec. 22-T88N-R14W.

→ NE CORNER: W.P.A. chaining notes dated 10/11/1938 call for "set C.M.", all reference ties obliterated. Corner was searched for most of the day on 1/5/1994 by Paul H. Helland (#6505). Corner could not be found at that time, partly due to frozen ground. A No. 4 rebar w/orange plastic cap #6505 was set on 1/5/1994. Excavated 6'±(E-W) x 3.5'±(N-S) x 2.5'± wide "L" shaped trench 5' deep to the North & East of said No. 4 rebar (#6505). Found standard concrete monument w/brass cap 1.7' deep. Set No. 4 rebar on North side for magnetic detection. Set No. 4 rebar (1.35' long) w/orange plastic cap #16264 above concrete monument.

## PLAN VIEW

(SHOW A MINIMUM OF THREE REFERENCE TIES TO DURABLE PHYSICAL OBJECTS, RELEVANT MONUMENTS AND PHYSICAL  
CONDITIONS THAT WILL ENABLE RECOVERY OF THE CORNER.)



(Bearings based upon Geodetic North)

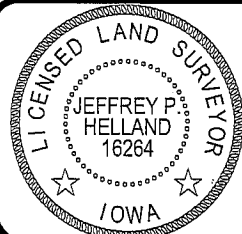


HELLAND ENGINEERING & SURVEYING, LTD.  
1107 Technology Parkway  
Cedar Falls, Iowa 50613-6951  
(319)-266-0161

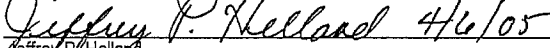
shiner = 8d nail & 1 15/16"Ø metal shiner

(00') Recorded As

File Name: 05-143c2.dwg



I hereby certify that this land surveying document was prepared and the related survey work was performed by me or under my direct personal supervision and that I am a duly licensed Land Surveyor under the laws of the State of Iowa.

  
Jeffrey P. Helland

License Number 16264

My license renewal date is December 31, 2005.

All pages or sheets are covered by this seal except:

## LIST CORNERS TO BE INDEXED

CORNER	SECTION	TOWNSHIP	RANGE
NE CORNER	22	88N	14W

Rec.