

Jeffrey P. Helland, 1107 Technology Parkway, Cedar Falls, Iowa 50613-6951, (319)-266-0161

UNITED STATES PUBLIC LAND SURVEY CORNER CERTIFICATE OF

LAND SURVEY MONUMENTS SITUATED IN SECTION NO. 22, TOWNSHIP NO. 88 NORTH, RANGE
NO. 14 WEST OF THE FIFTH PRINCIPAL MERIDIAN, BLACK HAWK COUNTY, IOWA.
PREVIOUSLY RECORDED IN _____.

(SHOW REASON FOR PREPARING THIS CERTIFICATE, THE EVIDENCE AND DETAILED PROCEDURES USED IN ESTABLISHING THE
CORNER POSITIONS AND MONUMENTATION FOUND OR PLACED.)

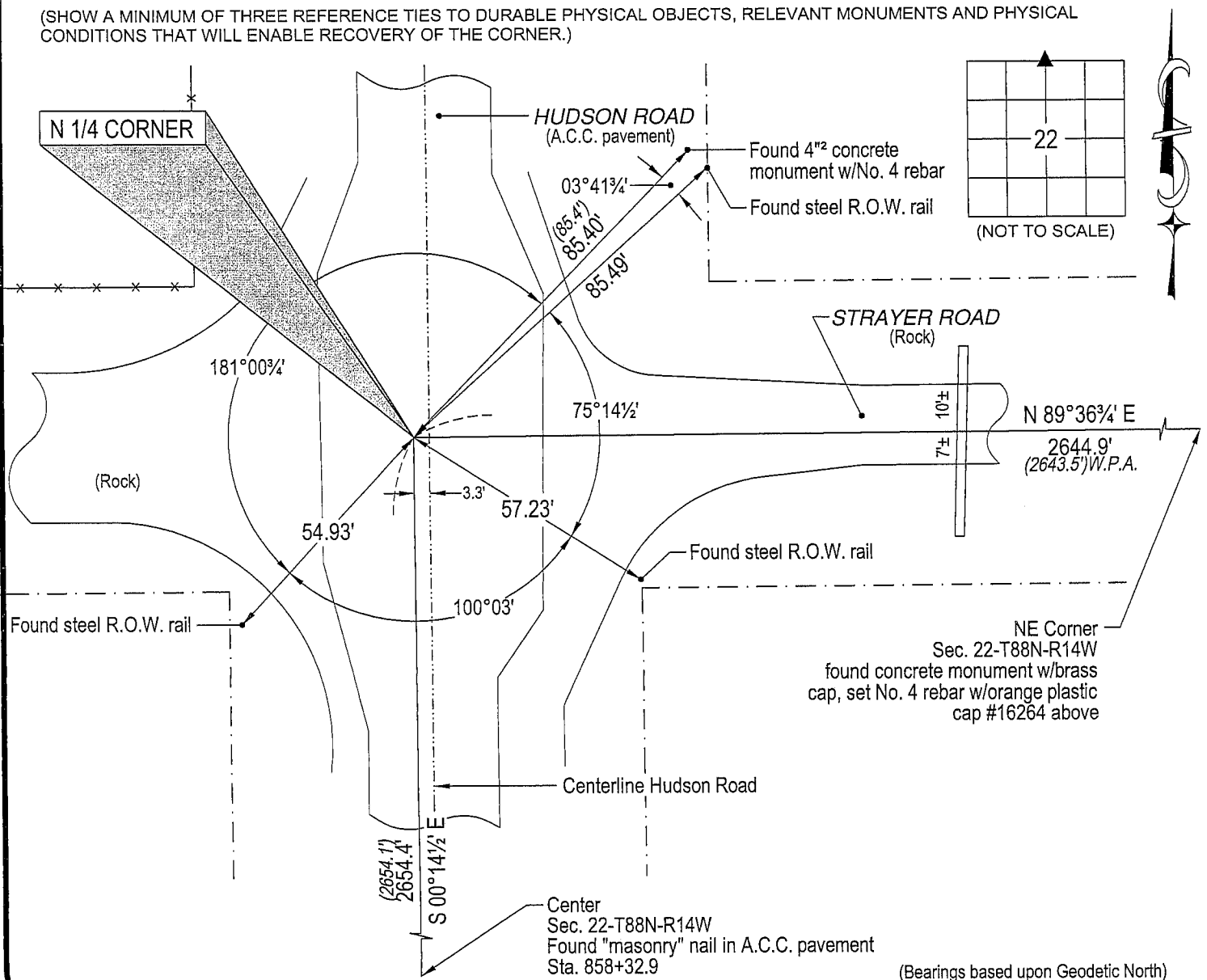
MONUMENT DESCRIPTION AND REMARKS:

No corner certificate on file. Survey completed in the NE 1/4 of Sec. 22-T88N-R14W.

→ N 1/4 CORNER: W.P.A. chaining notes dated 10/11/1938 call for "set C.M.", all reference ties obliterated. I.H.C. road
plats (1940) call for corner to be "lead plug" 3.3' West of Sta. 884+87.0. One of three I.H.C. reference ties remain (C.M. to
the NE). Established corner 85.4' from said NE C.M. and 3.3' West of the physical centerline of Hudson Road. Placed
"mag" nail in A.C.C. pavement.

PLAN VIEW

(SHOW A MINIMUM OF THREE REFERENCE TIES TO DURABLE PHYSICAL OBJECTS, RELEVANT MONUMENTS AND PHYSICAL
CONDITIONS THAT WILL ENABLE RECOVERY OF THE CORNER.)

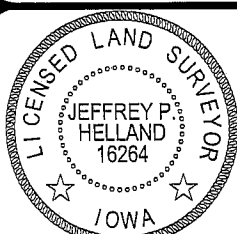


HELLAND ENGINEERING & SURVEYING, LTD.
1107 Technology Parkway
Cedar Falls, Iowa 50613-6951
(319)-266-0161

shiner = 8d nail & 1 15/16"Ø metal shiner

(00') Recorded As

File Name: 05-143c1.dwg



I hereby certify that this land surveying document was prepared
and the related survey work was performed by me or under my
direct personal supervision and that I am a duly licensed Land
Surveyor under the laws of the State of Iowa.

Jeffrey P. Helland 4/6/05

Jeffrey P. Helland
License Number 16264

My license renewal date is December 31, 2005.
All pages or sheets are covered by this seal except:

LIST CORNERS TO BE INDEXED

CORNER	SECTION	TOWNSHIP	RANGE
N 1/4 CORNER	22	88N	14W

Rec.