

PREPARED BY / RETURN TO: MIRANDA K. EILDERS IOWA DEPARTMENT OF TRANSPORTATION 428 43rd ST. SW MASON CITY, IA 50401 641-423-7584

UNITED STATES PUBLIC LAND SURVEY CORNER CERTIFICATE
OF

Land Survey Monuments situated in Section 22, Township 88N, Range 14W
of the Fifth Principal Meridian, BLACK HAWK County, Iowa.

Previously recorded in FEE BK*2005-23405,2005-23407 in County Recorder's Office.
(book, page, document number, etc.)

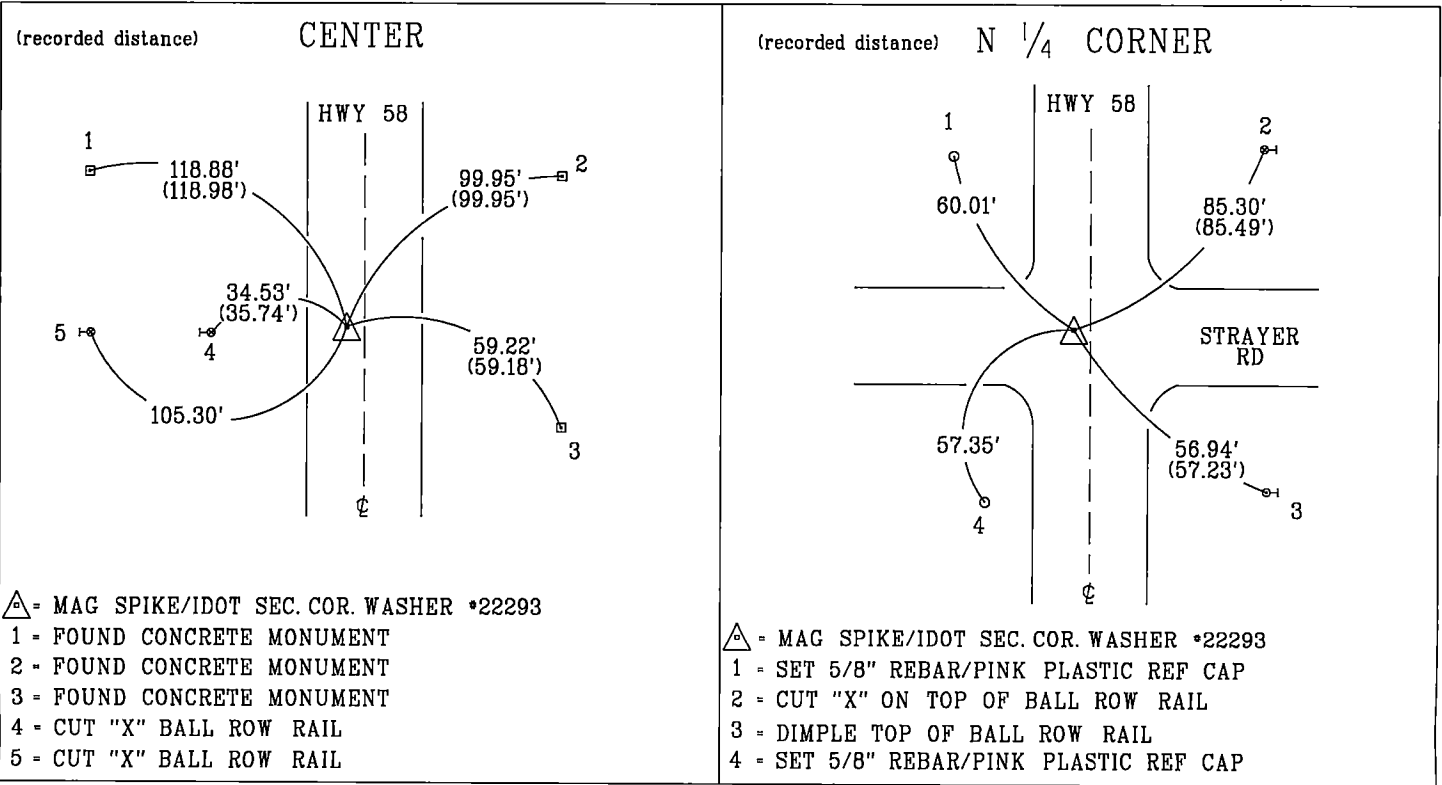
(Show reason for preparing this certificate, the evidence and detailed procedures used in establishing the corner positions and monumentation found or placed.)

Monument Description and Remarks: CENTER: REPLACED PREVIOUSLY FOUND NAIL STEM WITH
MAG SPIKE/IDOT WASHER *22293 4' WEST ¢ IA 58 PER CERT OF RECORD FEE BOOK *2005-23405
AFTER 2023 HMA RESURFACING PROJECT *NHSX-058-1(100)--3H-07.
REASON FOR CERT: MONUMENTATION AND TIES HAVE CHANGED.

N 1/4 CORNER: REPLACED PREVIOUSLY FOUND MAG NAIL STEM WITH MAG SPIKE/IDOT WASHER
*22293 3.3' WEST ¢ IA 58 PER CERT OF RECORD FEE BOOK *2005-23407 AFTER 2023 HMA
RESURFACING PROJECT *NHSX-058-1(100)--3H-07.
REASON FOR CERT: MONUMENTATION AND TIES HAVE CHANGED.

PLAN - VIEW

(Show a minimum of three reference ties to durable physical objects, relevant monuments and physical conditions that will enable recovery of the corner.)



MIRANDA K. EILDERS
22293
IOWA

I hereby certify that this land surveying document was prepared and the related survey work was performed by me or under my personal supervision and that I am duly licensed professional Land Surveyor under the laws of the state of Iowa.

Miranda K. Eilders 12-13-2023

Miranda K. Eilders Date

License number 22293

My License renewal date is December 31, 2023

Pages or sheets covered by this seal. 1

List Corners to be Indexed			
Corner	Section	Township	Range
CENTER	22	88N	14W
N 1/4 CORNER	22	88N	14W