

PROOF

FILED FOR RECORD NOV 13, 2002, AT 10:00 AM. FEE 1-5.00/

COMPARED

*Patricia A. Lee*

BLACK HAWK COUNTY RECORDER

WAYNE CLAASSEN ENGINEERING AND SURVEYING

WAYNE CLAASSEN ENGINEERING AND SURVEYING, INC.  
P.O. BOX 898 WATERLOO, IOWA 50704-0898PHONE: (VOICE) 319-235-6294  
(FAX) 319-235-0028

## UNITED STATES PUBLIC LAND SURVEY CORNER CERTIFICATE

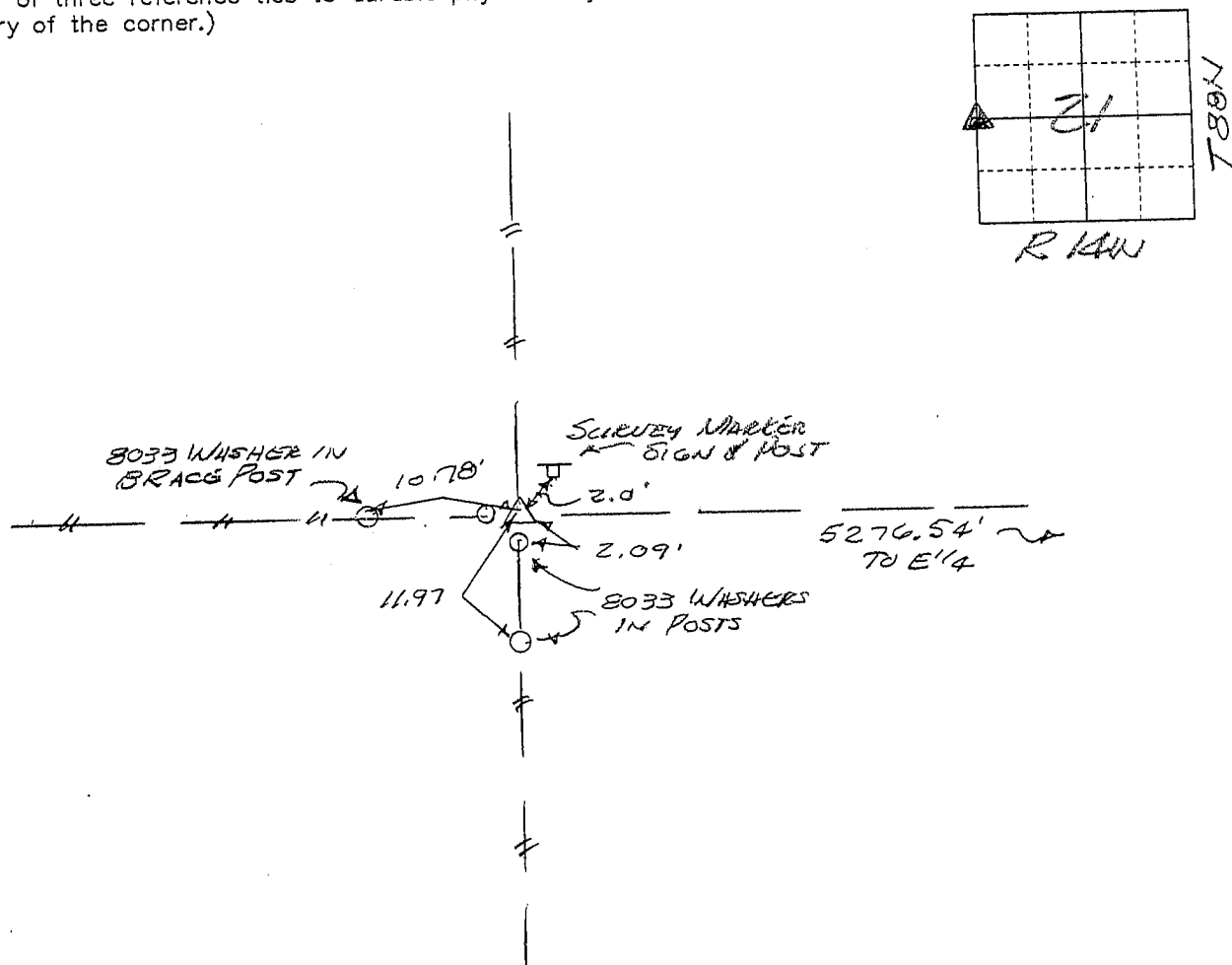
Land Survey Monuments situated in Section 21, Township 88N, Range 14W, of the Fifth Principal Meridian; BLACK HAWK County, Iowa.  
Previously recorded in N/A in County Recorder's Office.  
(book, page, document number, etc.)

(Show reason for preparing this certificate, the evidence and detailed procedures used in establishing the corner positions and monumentation found or placed.)

Monument Description and Remarks W 1/4 COR., FOUND 5CM 4" DEEP, SET SURVEY MARKER SIGN & POST 2' ± NORTH.

## PLAN - VIEW

(Show a minimum of three reference ties to durable physical objects, relevant monuments and physical conditions that will enable recovery of the corner.)



572-32

I hereby certify that the survey work was completed and this certificate was prepared by me or under my direct personal supervision and that I am a duly licensed land surveyor under the laws of the state of Iowa.

Signature:

(Name typed or printed:)

*F. William King*  
F. William King

Date:

Nov 11, 2002

Lic. No.

8033

SEAL

List Corners to be Indexed

Corners

W 1/4

Section

21

Twp

88N

Range

14W

