

Reserved for County Recorder's use.

Doc ID: 011798170001 Type: GEN
Recorded: 07/22/2022 at 10:33:47 AM
Fee Amt: \$7.00 Page 1 of 1
Black Hawk County Iowa
SANDIE L. SMITH RECORDER
File **2023-00001219**

Jeffery P. Helland, 6109 Chancellor Drive, Cedar Falls, Iowa 50613-6916, (319)-266-0161

UNITED STATES PUBLIC LAND SURVEY CORNER CERTIFICATE
OF

LAND SURVEY MONUMENTS SITUATED IN SECTION NO. 21, TOWNSHIP NO. 88 NORTH, RANGE
NO. 14 WEST OF THE FIFTH PRINCIPAL MERIDIAN, BLACK HAWK COUNTY, IOWA.
PREVIOUSLY RECORDED IN N/A

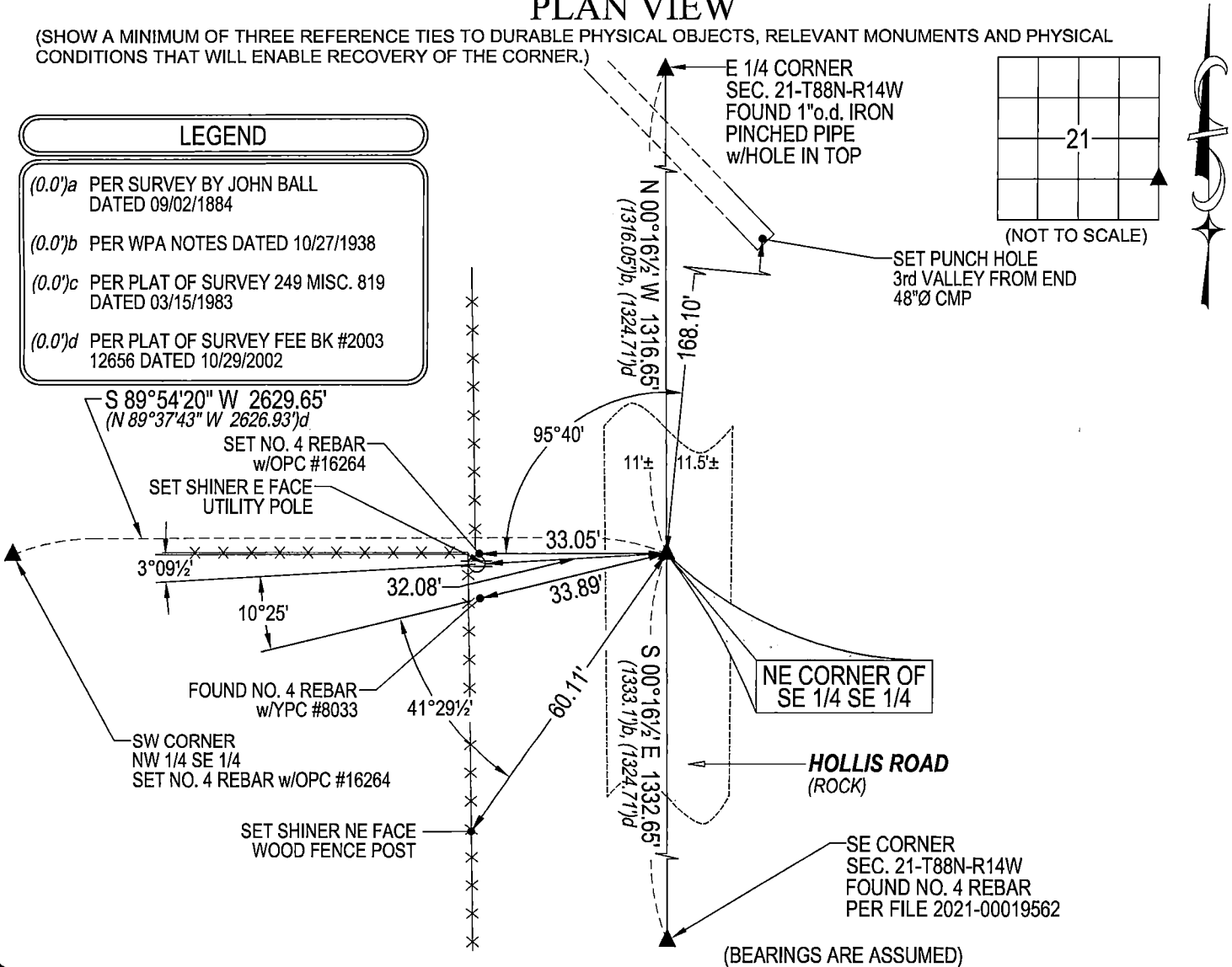
(SHOW REASON FOR PREPARING THIS CERTIFICATE, THE EVIDENCE AND DETAILED PROCEDURES USED IN ESTABLISHING THE
CORNER POSITIONS AND MONUMENTATION FOUND OR PLACED.)

MONUMENT DESCRIPTION AND REMARKS:
NO USPLSCC ON FILE. SURVEY COMPLETED IN THE SE 1/4 OF SEC. 21-T88N-R14W.

NE CORNER OF SE 1/4 SE 1/4: PLAT OF SURVEY IN FEE BOOK #2003 12656 DATED 10/29/2002 CALLS FOR [SET P-K NAIL
AT SECTION LINE]. SAID PLAT OF SURVEY INDICATES CORNER WAS SET AT MIDPOINT OF A LINE BETWEEN THE E 1/4
CORNER AND THE SE CORNER. WPA RANDOM LINE NOTES DATED 10/27/1938 INDICATES A FENCE RUNNING WEST
FROM SAID CORNER. FOUND FENCE RUNNING WEST FROM SAID CORNER IS APPROXIMATELY THE SAME POSITION AS
IN 1938. SET NO. 4 REBAR w/OPC #16264 AT BEST FIT OF RANDOM LINE NOTES AND EXISTING FENCE LINE RUNNING
WEST. FOUND "P-K" NAIL (13/16"Ø HEAD) 8.0' SOUTH OF CORNER PER PLAT OF SURVEY IN FEE BOOK #2003 1265.

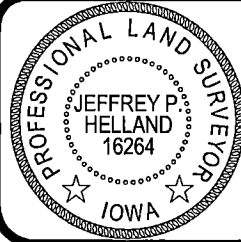
PLAN VIEW

(SHOW A MINIMUM OF THREE REFERENCE TIES TO DURABLE PHYSICAL OBJECTS, RELEVANT MONUMENTS AND PHYSICAL
CONDITIONS THAT WILL ENABLE RECOVERY OF THE CORNER.)



HELLAND ENGINEERING & SURVEYING, LTD.
6109 Chancellor Drive
Cedar Falls, Iowa 50613-6916
(319)-266-0161

SHINER = 4d. NAIL & 1 5/16"Ø METAL SHINER DRAWN BY: JPH
BRASS TAG = 4d. NAIL & 13/16"Ø BRASS TAG
OPC = PLASTIC CAP (O=ORANGE, R=RED, Y=YELLOW)
(00') RECORDED AS FILE NAME: 22-188-42.DWG



I hereby certify that this land surveying document was prepared
and the related survey work was performed by me or under my
direct personal supervision and that I am a duly licensed
Professional Land Surveyor under the laws of the State of Iowa.
Jeffrey P. Helland
License Number 16264
My license renewal date is December 31, 2023.
All pages or sheets are covered by this seal except:

LIST CORNERS TO BE INDEXED			
CORNER	SECTION	TOWNSHIP	RANGE
NE COR. SE 1/4 SE 1/4	21	88N	14W
SE COR. NE 1/4 SE 1/4	21	88N	14W