

PAUL HELLAND

I

P

Z

Document Number: 2007018398

Date: Mar 02, 2007 4:30:00 pm

Aud Fee: 0.00 Rec Fee: 5.00

Trans Tax: 0.00 Rec Management Fee: 1.00

E-Com Fee: 1.00 Non-Standard Page Fee: 0.00

Filed for record in Black Hawk County, Iowa
Judith A. McCarthy, County Recorder

Paul H. Helland, 1107 Technology Parkway, Cedar Falls, Iowa 50613-6951, (319)-266-0161.

UNITED STATES PUBLIC LAND SURVEY CORNER CERTIFICATE OF

LAND SURVEY MONUMENTS SITUATED IN SECTION NO. 19, TOWNSHIP NO. 88 NORTH, RANGE
NO. 14 WEST OF THE FIFTH PRINCIPAL MERIDIAN, BLACK HAWK COUNTY, IOWA.

PREVIOUSLY RECORDED IN N/A

(SHOW REASON FOR PREPARING THIS CERTIFICATE, THE EVIDENCE AND DETAILED PROCEDURES USED IN ESTABLISHING THE
CORNER POSITIONS AND MONUMENTATION FOUND OR PLACED.)

MONUMENT DESCRIPTION AND REMARKS:

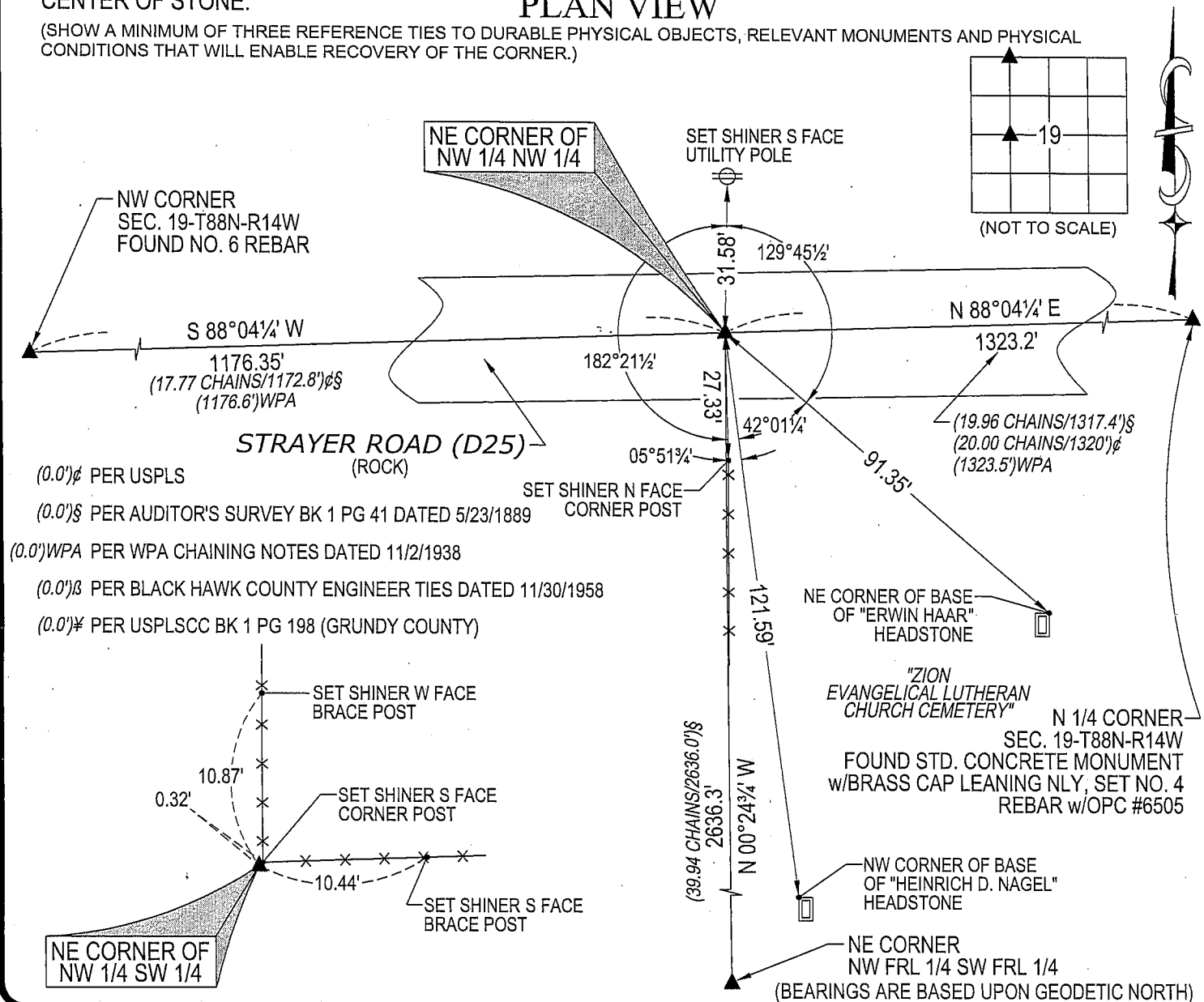
NO USPLSCC ON FILE. SURVEY COMPLETED IN THE NE 1/4 NW FRL 1/4 OF SEC. 19-T88N-R14W.

→ **NE CORNER OF NW FRL 1/4 NW FRL 1/4:** BLACK HAWK COUNTY AUDITOR'S SURVEY BK 1 PAGE 41 BY JOHN BALL DATED 5/23/1889 UTILIZES CORNER BUT DOES NOT CALL FOR A STONE. NO BLACK HAWK COUNTY ENGINEER AVAILABLE. SET NO. 4 REBAR w/OPC #6505 (0.7' LONG) AT PRORATION OF WPA CHAINING NOTES DATED 11/2/1938.

→ **NE CORNER NW FRL 1/4 SW FRL 1/4:** BLACK HAWK COUNTY AUDITOR'S SURVEY BK 1 PAGE 41 BY JOHN BALL DATED 5/23/1889 CALL FOR [STONE.] NO BLACK HAWK COUNTY ENGINEER AVAILABLE. FOUND 0.4'N-Sx0.6'E-W(TOP VIEW)x1.0'± LIMESTONE, LIMESTONE IS 1.7' DEEP, SET NO. 4 REBAR w/OPC #6505 ABOVE CENTER OF STONE.

PLAN VIEW

(SHOW A MINIMUM OF THREE REFERENCE TIES TO DURABLE PHYSICAL OBJECTS, RELEVANT MONUMENTS AND PHYSICAL
CONDITIONS THAT WILL ENABLE RECOVERY OF THE CORNER.)

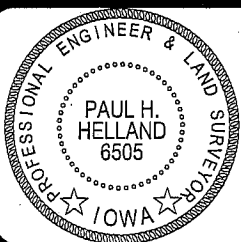


HELLAND ENGINEERING & SURVEYING, LTD.
1107 Technology Parkway
Cedar Falls, Iowa 50613-6951
(319)-266-0161

SHINER = 8D NAIL & 1 5/16"Ø METAL SHINER
OPC = PLASTIC CAP (O=ORANGE, R=RED, Y=YELLOW)

(00') RECORDED AS

FILE NAME: 07-119C3.DWG



I hereby certify that this land surveying document was prepared
and the related survey work was performed by me or under my
direct personal supervision and that I am a duly licensed Land
Surveyor under the laws of the State of Iowa.

Paul H. Helland 2/25/07
Paul H. Helland
License Number 6505
My license renewal date is December 31, 2007.
All pages or sheets are covered by this seal except:

LIST CORNERS TO BE INDEXED

CORNER	SECTION	TOWNSHIP	RANGE
NE CORNER NW 1/4 NW 1/4	19	88N	14W
NE CORNER NW 1/4 SW 1/4	19	88N	14W