

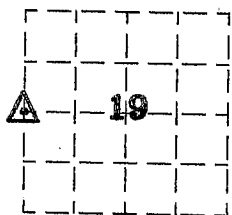
I
P
Z

Document Number: 2007022356
Date: Apr 24, 2007 4:30:00 pm
Aud Fee: 0.00 Rec Fee: 5.00
Trans Tax: 0.00 Rec Management Fee: 1.00
E-Com Fee: 1.00 Non-Standard Page Fee: 0.00
Filed for record in Black Hawk County, Iowa
Judith A. McCarthy, County Recorder

Kirk D. Eschliman, P.L.S. Iowa Lic. No. 9961, 723 Broadway Street, Waterloo, Iowa 50703 - Phone: 319-234-0509

UNITED STATES PUBLIC LAND SURVEY CORNER CERTIFICATE OF
LAND SURVEY MONUMENTS SITUATED IN SECTION 19, TOWNSHIP 88 NORTH, RANGE 14 WEST, OF THE FIFTH PRINCIPAL
MERIDIAN, BLACK HAWK COUNTY, IOWA. PREVIOUSLY NOT RECORDED.

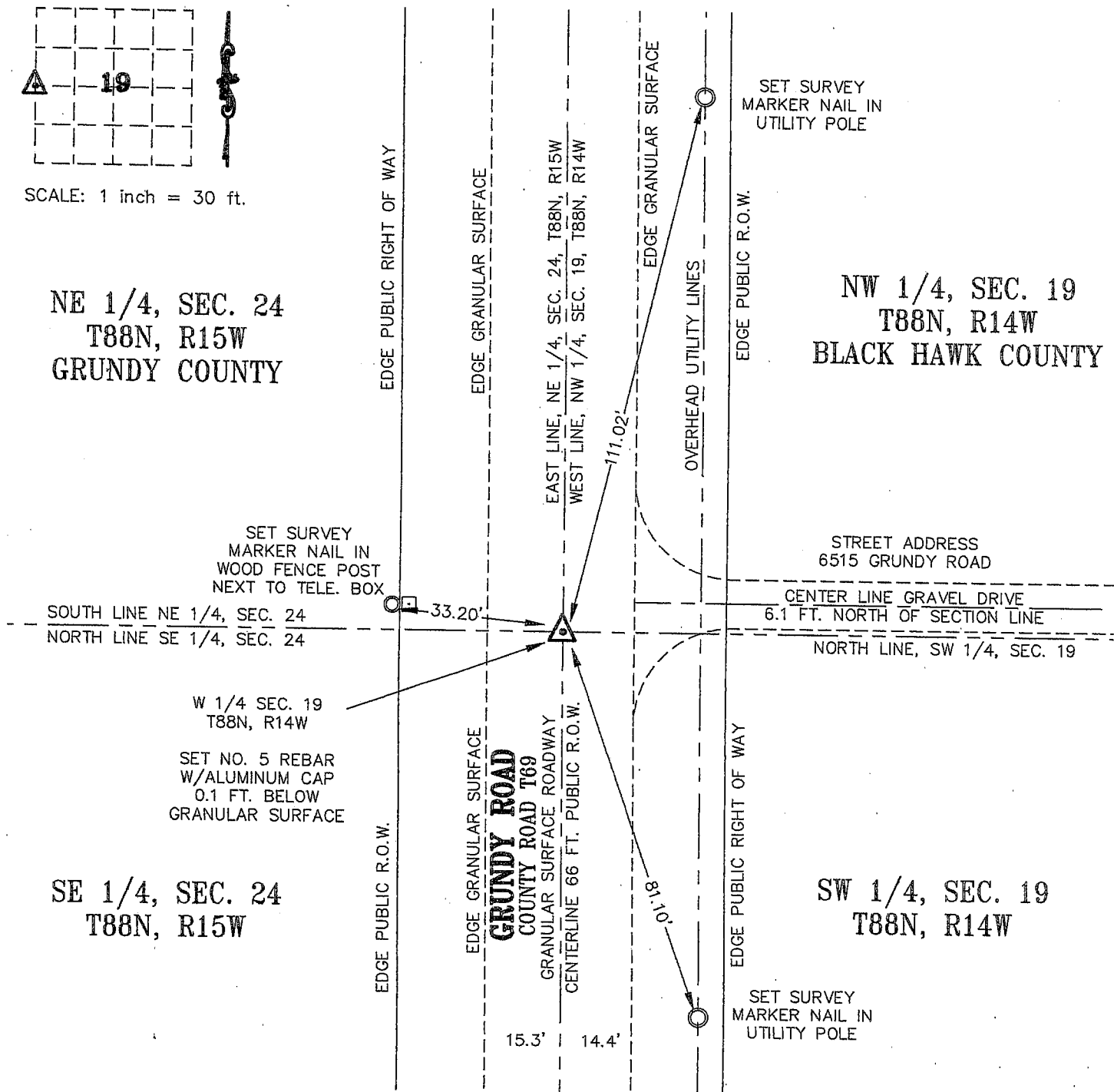
(SHOW REASON FOR PREPARING THIS CERTIFICATE, THE EVIDENCE AND DETAILED PROCEDURES USED IN ESTABLISHING THE CORNER POSITIONS AND
MONUMENTATION FOUND OR PLACED.)
MONUMENT DESCRIPTION AND REMARKS: NO CURRENT SECTION CORNER CERTIFICATE ON RECORD IN THE BLACK
HAWK COUNTY RECORDER'S OFFICE. 1938 WPA NOTES REFERENCE A CONCRETE MONUMENT SET ON TOP OF A
FOUND STONE. FOUND BROKEN CONCRETE MONUMENT AT TIME OF SURVEY. SET NO. 5 REBAR WITH ALUMINUM
CAP 0.1 FEET BELOW GRANULAR SURFACE ROADWAY, ABOVE LOWER PORTION OF CONCRETE MON. MONUMENT
USED FOR SURVEY IN NE 1/4 OF SECTION 19.



SCALE: 1 inch = 30 ft.

NE 1/4, SEC. 24
T88N, R15W
GRUNDY COUNTY

NW 1/4, SEC. 19
T88N, R14W
BLACK HAWK COUNTY



I HEREBY CERTIFY THAT THIS LAND SURVEYING DOCUMENT
WAS PREPARED AND THE RELATED SURVEY WORK WAS
PERFORMED BY ME OR UNDER MY DIRECT PERSONAL
SUPERVISION AND THAT I AM A DULY LICENSED LAND
SURVEYOR UNDER THE LAWS OF THE STATE OF IOWA

Kirk D. Eschliman DATE: 04/12/2007
KIRK D. ESCHLIMAN, P.L.S. IOWA LIC. NO. 9961
MY LICENSE RENEWAL DATE IS DECEMBER 31, 2007
PAGES OR SHEETS COVERED BY THIS SIGNATURE & SEAL: SHEET 1 OF 1



LIST OF CORNERS TO BE INDEXED:

CORNER	SEC	TWP	RANGE
W 1/4	19	88	14

KESS & ASSOCIATES, INC.
723 BROADWAY, WATERLOO, IOWA 50703-5811 PHONE: (319) 234-0509

DATE OF FIELD WORK: APRIL 05, 2007
DWG. DATE: 04/12/2007 DRAWN BY: BJYK
CADD FILE: 07A38SCC6.DWG PROJECT NO.: 07A38