

I  
P  
Z

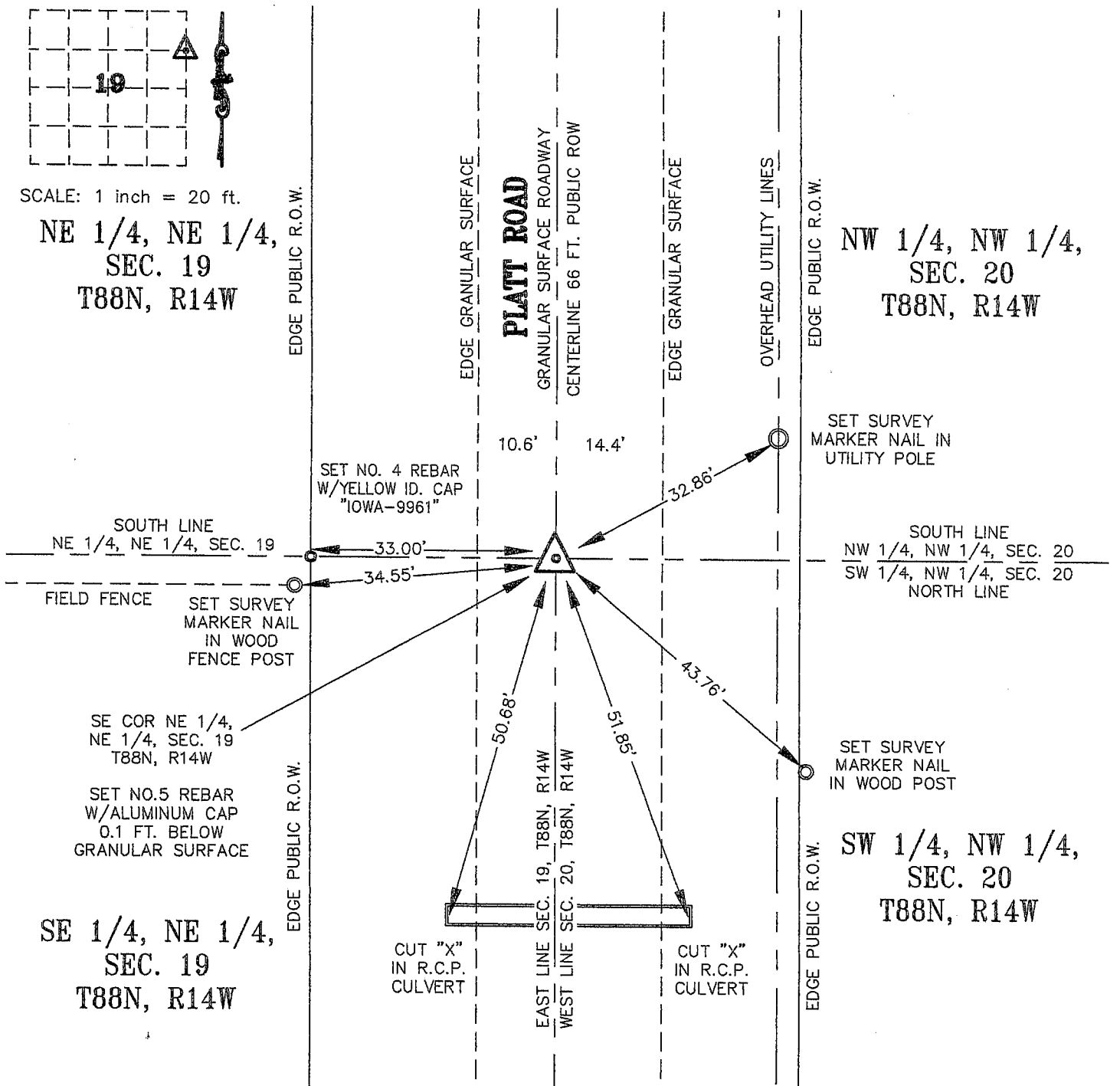
Document Number: 2007022357  
Date: Apr 24, 2007 4:30:00 pm  
Aud Fee: 0.00 Rec Fee: 5.00  
Trans Tax: 0.00 Rec Management Fee: 1.00  
E-Com Fee: 1.00 Non-Standard Page Fee: 0.00  
Filed for record in Black Hawk County, Iowa  
Judith A. McCarthy, County Recorder

Kirk D. Eschliman, P.L.S. Iowa Lic. No. 9961, 723 Broadway Street, Waterloo, Iowa 50703 - Phone: 319-234-0509

# UNITED STATES PUBLIC LAND SURVEY CORNER CERTIFICATE OF LAND SURVEY MONUMENTS SITUATED IN SECTION 19, TOWNSHIP 88 NORTH, RANGE 14 WEST, OF THE FIFTH PRINCIPAL MERIDIAN, BLACK HAWK COUNTY, IOWA. PREVIOUSLY NOT RECORDED.

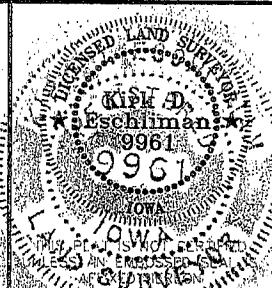
(SHOW REASON FOR PREPARING THIS CERTIFICATE, THE EVIDENCE AND DETAILED PROCEDURES USED IN ESTABLISHING THE CORNER POSITIONS AND MONUMENTATION FOUND OR PLACED.)

MONUMENT DESCRIPTION AND REMARKS: NO CURRENT SECTION CORNER CERTIFICATE ON RECORD IN THE BLACK HAWK COUNTY RECORDER'S OFFICE. SET NO. 5 REBAR WITH 2.0 INCH ALUMINUM CAP 0.1 FEET BELOW GRANULAR SURFACE ROADWAY. MONUMENT USED FOR SURVEY IN NE 1/4 OF SECTION 19.



I HEREBY CERTIFY THAT THIS LAND SURVEYING DOCUMENT WAS PREPARED AND THE RELATED SURVEY WORK WAS PERFORMED BY ME OR UNDER MY DIRECT PERSONAL SUPERVISION AND THAT I AM A DULY LICENSED LAND SURVEYOR UNDER THE LAWS OF THE STATE OF IOWA.

Kirk D. Eschliman, P.L.S. IOWA LIC. NO. 9961  
MY LICENSE RENEWAL DATE IS DECEMBER 31, 2007  
PAGES OR SHEETS COVERED BY THIS SIGNATURE & SEAL: SHEET 1 OF 1



LIST OF CORNERS TO BE INDEXED:

CORNER	SEC	TWP	RANGE
SE COR. OF NE 1/4, NE 1/4	19	88	14

KESS & ASSOCIATES, INC.  
723 BROADWAY, WATERLOO, IOWA 50703-5811 PHONE: (319) 234-0509

DATE OF FIELD WORK: APRIL 12, 2007  
DWG. DATE: 04/13/2007 DRAWN BY: BJYK  
CADD FILE: 07A38SCC7.DWG PROJECT NO.: 07A38