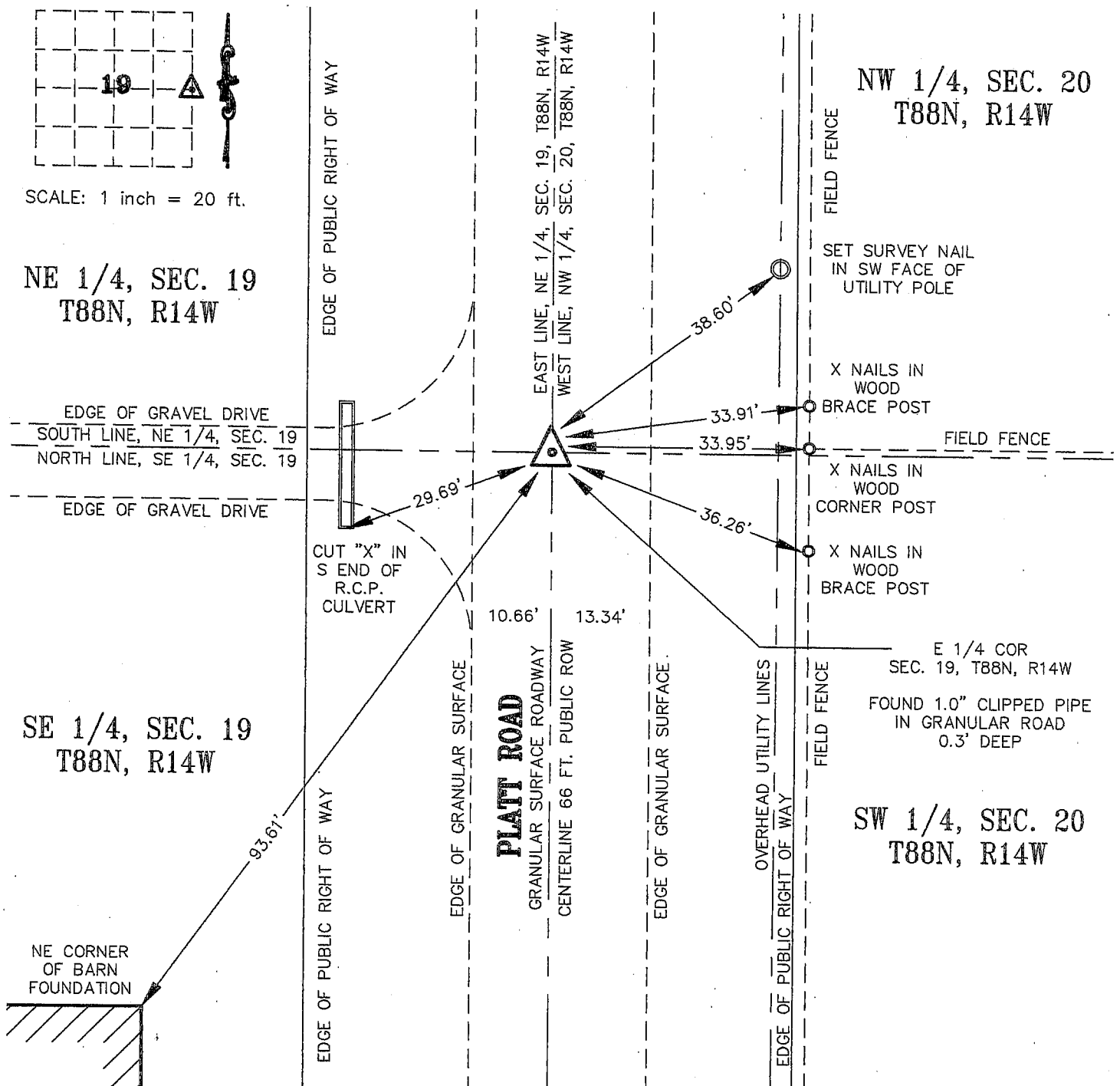


Kirk D. Eschliman, P.L.S. Iowa Lic. No. 9961, 723 Broadway Street, Waterloo, Iowa 50703 - Phone: 319-234-0509

UNITED STATES PUBLIC LAND SURVEY CORNER CERTIFICATE OF LAND SURVEY MONUMENTS SITUATED IN SECTION 19, TOWNSHIP 88 NORTH, RANGE 14 WEST, OF THE FIFTH PRINCIPAL MERIDIAN, BLACK HAWK COUNTY, IOWA. PREVIOUSLY NOT RECORDED.

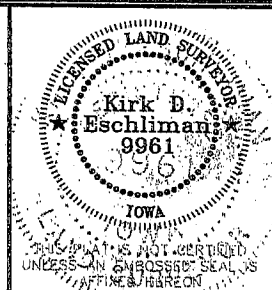
(SHOW REASON FOR PREPARING THIS CERTIFICATE, THE EVIDENCE AND DETAILED PROCEDURES USED IN ESTABLISHING THE CORNER POSITIONS AND MONUMENTATION FOUND OR PLACED.)

MONUMENT DESCRIPTION AND REMARKS: NO CURRENT SECTION CORNER CERTIFICATE ON RECORD IN THE BLACK HAWK COUNTY RECORDER'S OFFICE. 1938 WPA NOTES REFERENCE A CONCRETE MONUMENT SET ON TOP OF A FOUND STONE. FOUND 1.0 INCH CLIPPED IRON PIPE 0.3 FEET DEEP IN GRANULAR SURFACE ROADWAY AT TIME OF SURVEY. MONUMENT USED FOR SURVEY IN NE 1/4 OF SECTION 19.



I HEREBY CERTIFY THAT THIS LAND SURVEYING DOCUMENT WAS PREPARED AND THE RELATED SURVEY WORK WAS PERFORMED BY ME OR UNDER MY DIRECT PERSONAL SUPERVISION AND THAT I AM A DULY LICENSED LAND SURVEYOR UNDER THE LAWS OF THE STATE OF IOWA.

Kirk D. Eschliman DATE: 04/04/2007
KIRK D. ESCHLIMAN, P.L.S. IOWA LIC. NO. 9961
MY LICENSE RENEWAL DATE IS DECEMBER 31, 2007
PAGES OR SHEETS COVERED BY THIS SIGNATURE & SEAL: SHEET 1 OF 1



LIST OF CORNERS TO BE INDEXED:

CORNER	SEC	TWP	RANGE
E 1/4	19	88	14

KESS & ASSOCIATES, INC.
723 BROADWAY, WATERLOO, IOWA 50703-5811 PHONE: (319) 234-0509

DATE OF FIELD WORK: APRIL 02, 2007
DWG. DATE: 04/04/2007 DRAWN BY: BJYK
CADD FILE: 07A38SCC2.DWG PROJECT NO.: 07A38