

Reserved for County Recorder's use.



Doc ID: 011848820001 Type: GEN
Recorded: 10/14/2022 at 10:31:04 AM
Fee Amt: \$7.00 Page 1 of 1
Black Hawk County Iowa
SANDIE L. SMITH RECORDER

File **2023-00006148**

Jeffrey P. Helland, 6109 Chancellor Drive, Cedar Falls, Iowa 50613-6916, (319)-266-0161

UNITED STATES PUBLIC LAND SURVEY CORNER CERTIFICATE
OF

LAND SURVEY MONUMENTS SITUATED IN SECTION NO. 18, TOWNSHIP NO. 88 NORTH, RANGE
NO. 14 WEST OF THE FIFTH PRINCIPAL MERIDIAN, BLACK HAWK COUNTY, IOWA.
PREVIOUSLY RECORDED IN FILE 2023-00002968

(SHOW REASON FOR PREPARING THIS CERTIFICATE, THE EVIDENCE AND DETAILED PROCEDURES USED IN ESTABLISHING THE
CORNER POSITIONS AND MONUMENTATION FOUND OR PLACED.)

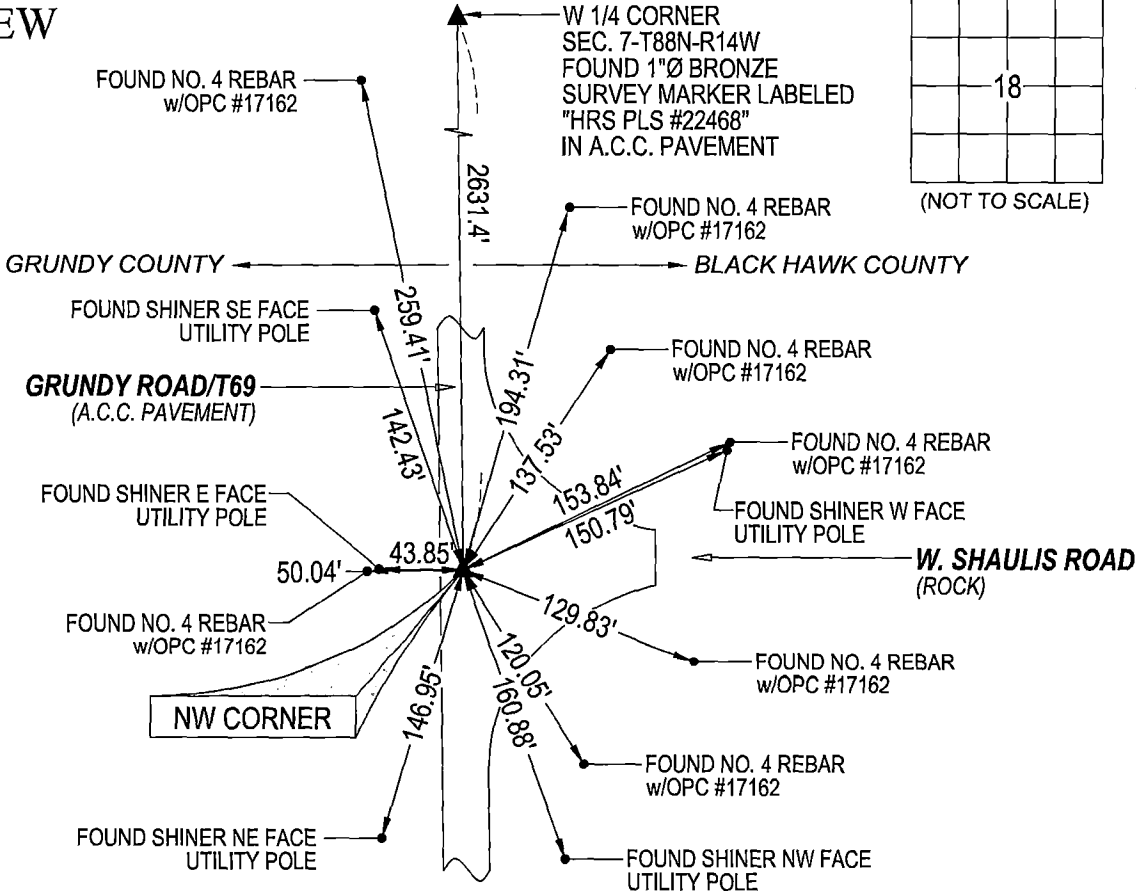
MONUMENT DESCRIPTION AND REMARKS:

MONUMENT SET PER USPLSCC FILE 2023-00002968 WAS REMOVED, RESET SAME MONUMENT IN THE SAME POSITION.
SURVEY COMPLETED IN THE SE 1/4 OF SEC. 12-T88N-R15W.

→ **NW CORNER:** USPLSCC FILE 2023-00002968 DATED 08/18/2022 (RECORDED 08/19/2022) CALLS FOR [USPLSCC IN
#202000001293 DATED 07/22/2019 CALLS FOR [FOUND STANDARD CONCRETE MONUMENT, 15" DEEP, WITH
INFORMATION OBTAINED FROM THE BLACK HAWK COUNTY ENGINEERS OFFICE. SET 5/8"Ø x 12" REBAR w/2"Ø
ALUMINUM CAP PLS #22468, ABOVE THE FOUND STANDARD CONCRETE MONUMENT TO PERPETUATE THE CORNER.]
SEARCHED AREA WITH MAGNETIC DETECTOR, EXCAVATED, AND FOUND STANDARD CONCRETE MONUMENT 1.6±
DEEP. CALLED FOR 5/8"Ø REBAR MUST HAVE BEEN REMOVED DURING CONSTRUCTION OF THE NEW ROAD BED. SET
NO. 4 REBAR w/OPC #16264 ABOVE SAID CONCRETE MONUMENT. TIED OUT CORNER, SET "MAG" NAIL (9/16"Ø HEAD) IN
NEW A.C.C. PAVEMENT AFTER CONSTRUCTION OF ROAD WAS COMPLETED. SAID "MAG" NAIL IS 0.06± WEST OF
CENTERLINE JOINT.]. I VISITED THE SITE ON 09/14/2022 AND DISCOVERED THAT THE "MAG" NAIL THAT I HAD SET HAD
BEEN REMOVED AND A NEW MONUMENT (1"Ø BRONZE SURVEY MARKER LABELED "HRS PLS #22468") HAD BEEN SET
0.12' NW OF WHERE THE "MAG" NAIL USED TO BE. I CONTACTED HRS ON 9/15/2022 VIA EMAIL ABOUT THE MONUMENT
THAT THEY SET. ISAIAH M. REICKS STATED THAT HE WOULD REMOVE HIS MARKER AND RESET IT AT MY LOCATION. ON
09/16/2022 I RESET A "MAG" NAIL (9/16"Ø HEAD) IN THE POSITION PER USPLSCC FILE 2023-00002968.

(SHOW A MINIMUM OF THREE REFERENCE TIES TO DURABLE PHYSICAL OBJECTS, RELEVANT MONUMENTS AND PHYSICAL
CONDITIONS THAT WILL ENABLE RECOVERY OF THE CORNER.)

PLAN VIEW



HELLAND ENGINEERING & SURVEYING, LTD.
6109 Chancellor Drive
Cedar Falls, Iowa 50613-6916
(319)-266-0161

SHINER = 4d. NAIL & 1 5/16"Ø METAL SHINER DRAWN BY: JPH
BRASS TAG = 4d. NAIL & 13/16"Ø BRASS TAG
OPC = PLASTIC CAP (O=ORANGE, R=RED, Y=YELLOW)
(00') RECORDED AS FILE NAME: 22-264-23BH-REVISED.DWG



I hereby certify that this land surveying document was prepared
and the related survey work was performed by me or under my
direct personal supervision and that I am a duly licensed
Professional Land Surveyor under the laws of the State of Iowa.
Jeffrey P. Helland 10/14/2022
Jeffrey P. Helland
License Number 16264
My license renewal date is December 31, 2023.
All pages or sheets are covered by this seal except:

LIST CORNERS TO BE INDEXED			
CORNER	SECTION	TOWNSHIP	RANGE
NW CORNER	18	88N	14W
SW CORNER	7	88N	14W