

Reserved for County Recorder's use.



Doc ID: 011816280001 Type: GEN
Recorded: 08/19/2022 at 08:44:59 AM
Fee Amt: \$7.00 Page 1 of 1
Black Hawk County Iowa
SANDIE L. SMITH RECORDER

File **2023-00002968**

Jeffery P. Helland, 6109 Chancellor Drive, Cedar Falls, Iowa 50613-6916, (319)-266-0161

UNITED STATES PUBLIC LAND SURVEY CORNER CERTIFICATE
OF

LAND SURVEY MONUMENTS SITUATED IN SECTION NO. 18, TOWNSHIP NO. 88 NORTH, RANGE
NO. 14 WEST OF THE FIFTH PRINCIPAL MERIDIAN, BLACK HAWK COUNTY, IOWA.
PREVIOUSLY RECORDED IN #202000001293

(SHOW REASON FOR PREPARING THIS CERTIFICATE, THE EVIDENCE AND DETAILED PROCEDURES USED IN ESTABLISHING THE
CORNER POSITIONS AND MONUMENTATION FOUND OR PLACED.)

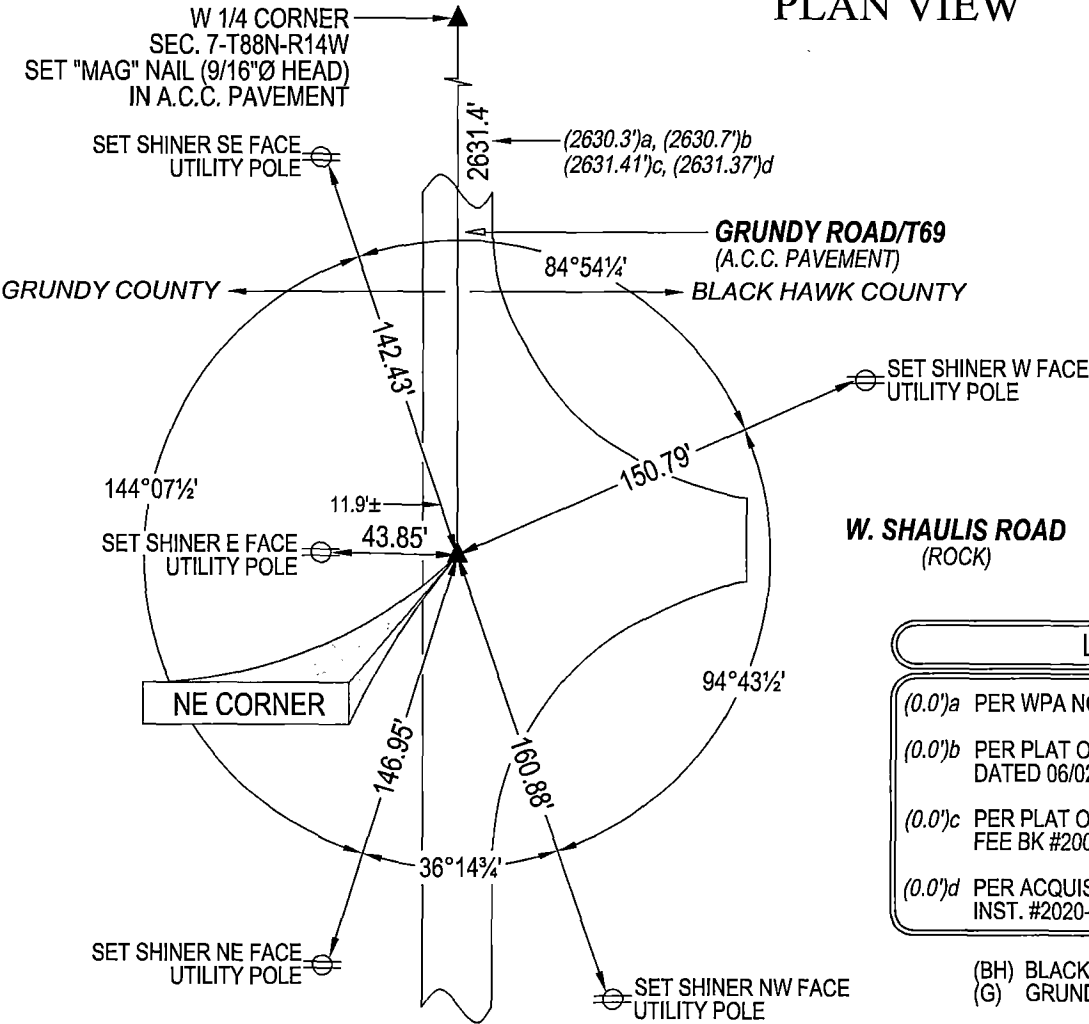
MONUMENT DESCRIPTION AND REMARKS:

ALL REFERENCE TIES HAVE BEEN OBLITERATED, MONUMENTATION HAS CHANGED. SURVEY COMPLETED IN THE SE 1/4
OF SEC. 12-T88N-R15W.

→ **NW CORNER:** USPLSCC IN #202000001293 DATED 07/22/2019 CALLS FOR [FOUND STANDARD CONCRETE MONUMENT,
15" DEEP, WITH INFORMATION OBTAINED FROM THE BLACK HAWK COUNTY ENGINEERS OFFICE. SET 5/8"Ø x 12" REBAR
w/2"Ø ALUMINUM CAP PLS 22468, ABOVE THE FOUND STANDARD CONCRETE MONUMENT TO PERPETUATE THE
CORNER.] SEARCHED AREA WITH MAGNETIC DETECTOR, EXCAVATED, AND FOUND STANDARD CONCRETE MONUMENT
1.6'± DEEP. CALLED FOR 5/8"Ø REBAR MUST HAVE BEEN REMOVED DURING CONSTRUCTION OF THE NEW ROAD BED.
SET NO. 4 REBAR w/OPC #16264 ABOVE SAID CONCRETE MONUMENT. TIED OUT CORNER, SET "MAG" NAIL (9/16"Ø
HEAD) IN NEW A.C.C. PAVEMENT AFTER CONSTRUCTION OF ROAD WAS COMPLETED. SAID "MAG" NAIL IS 0.06'± WEST
OF CENTERLINE JOINT.

(SHOW A MINIMUM OF THREE REFERENCE TIES TO DURABLE PHYSICAL OBJECTS, RELEVANT MONUMENTS AND PHYSICAL
CONDITIONS THAT WILL ENABLE RECOVERY OF THE CORNER.)

PLAN VIEW



(NOT TO SCALE)

LEGEND

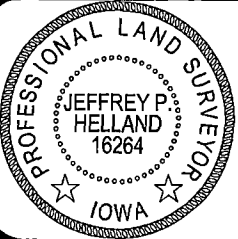
- (0.0')a PER WPA NOTES DATED 11/10/1938 (BH)
- (0.0')b PER PLAT OF SURVEY BK 73-C PG 110 DATED 06/02/1990 (G)
- (0.0')c PER PLAT OF SURVEY (BH) FEE BK #2003 00574 DATED 07/07/2004
- (0.0')d PER ACQUISITION PLAT IN INST. #2020-2328 DATED 09/16/2020 (G)

(BH) BLACK HAWK COUNTY
(G) GRUNDY COUNTY



HELLAND ENGINEERING & SURVEYING, LTD.
6109 Chancellor Drive
Cedar Falls, Iowa 50613-6916
(319)-266-0161

SHINER = 4d. NAIL & 1 5/16"Ø METAL SHINER DRAWN BY: JPH
BRASS TAG = 4d. NAIL & 13/16"Ø BRASS TAG
OPC = PLASTIC CAP (O=ORANGE, R=RED, Y=YELLOW)
(00') RECORDED AS FILE NAME: 22-264-23BH.DWG



I hereby certify that this land surveying document was prepared
and the related survey work was performed by me or under my
direct personal supervision and that I am a duly licensed
Professional Land Surveyor under the laws of the State of Iowa.
Jeffrey P. Helland 8/19/2022
Jeffrey P. Helland
License Number 16264
My license renewal date is December 31, 2023.
All pages or sheets are covered by this seal except:

LIST CORNERS TO BE INDEXED

CORNER	SECTION	TOWNSHIP	RANGE
NW CORNER	18	88N	14W
SW CORNER	7	88N	14W