

Jeffrey P. Helland, 1107 Technology Parkway, Cedar Falls, Iowa 50613-6951, (319)-266-0161

UNITED STATES PUBLIC LAND SURVEY CORNER CERTIFICATE  
OFLAND SURVEY MONUMENTS SITUATED IN SECTION NO. 18, TOWNSHIP NO. 88 NORTH, RANGE  
NO. 14 WEST OF THE FIFTH PRINCIPAL MERIDIAN, BLACK HAWK COUNTY, IOWA.PREVIOUSLY RECORDED IN N/A.(SHOW REASON FOR PREPARING THIS CERTIFICATE, THE EVIDENCE AND DETAILED PROCEDURES USED IN ESTABLISHING THE  
CORNER POSITIONS AND MONUMENTATION FOUND OR PLACED.)

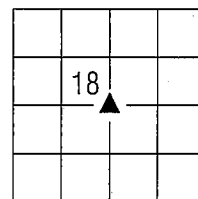
## MONUMENT DESCRIPTION AND REMARKS:

NO USPLSCC ON FILE. SURVEY COMPLETED IN THE W FRL 1/2 SW FRL 1/4 OF SEC. 18-T88N-R14W.

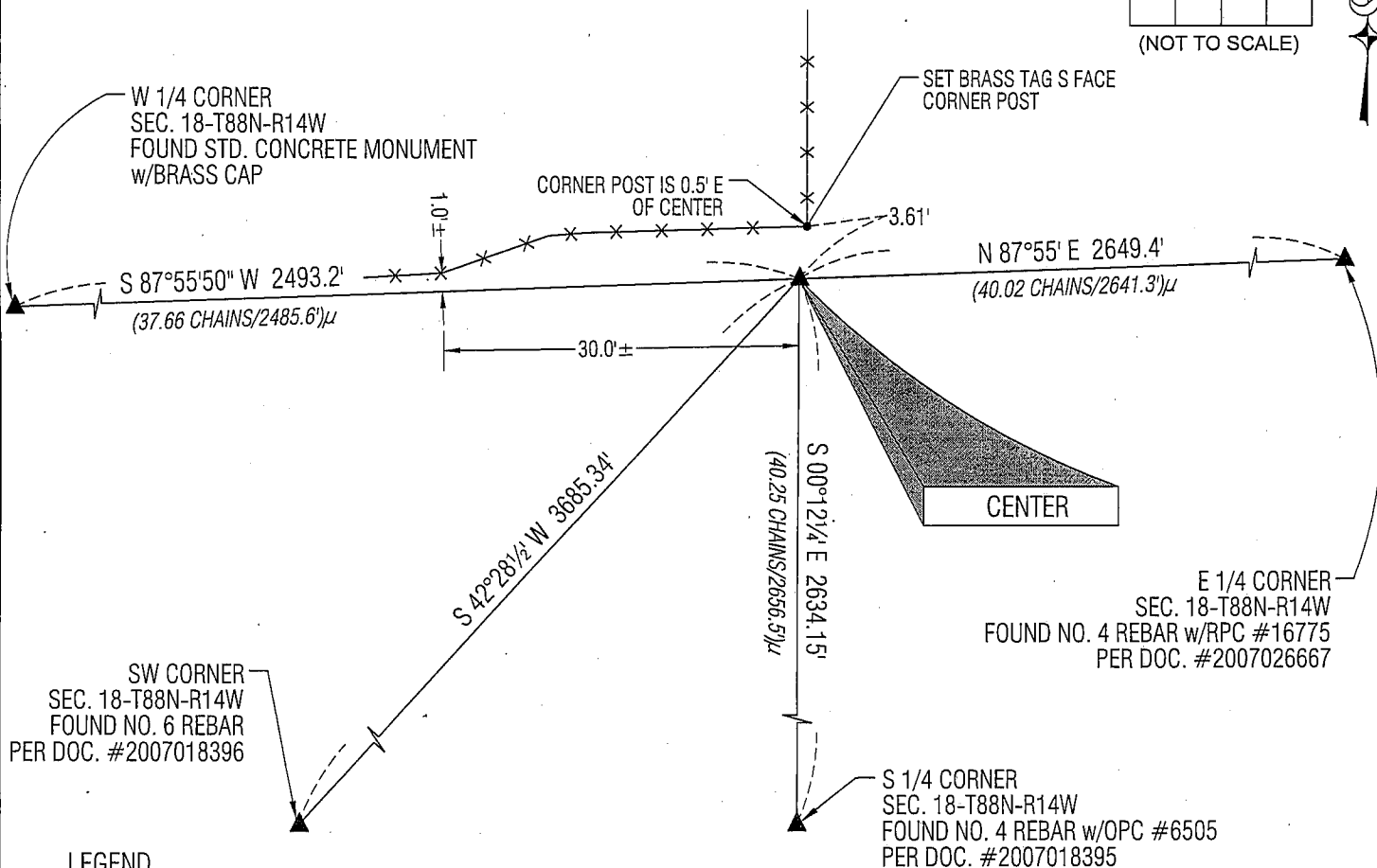
→ **CENTER:** AUDITOR'S SURVEY BK 1 PG 455 DATED 5/11/1870 CALLS FOR [STONE & STAKE]. NO BLACK HAWK COUNTY  
ENGINEER REFERENCE TIES AVAILABLE. DUG 4'± Ø HOLE 2'± DEEP THEN PROBED TO A DEPTH OF 4'± AT PRORATED  
DISTANCE BETWEEN THE W 1/4 CORNER AND THE E 1/4 CORNER PER AUDITOR'S SURVEY RECORD BK 1 PG 455 DATED  
5/11/1870. FOUND SMALL STONE 4'± DEEP, DID NOT DEEM SUBSTANTIAL ENOUGH TO BE THE CALLED FOR STONE. NO  
OTHER EVIDENCE FOUND. SET NO. 4 REBAR w/ALUMINUM CAP #16264 AT SAID PRORATED DISTANCE ON A STRAIGHT LINE  
BETWEEN THE W 1/4 CORNER AND E 1/4 CORNER.

(SHOW A MINIMUM OF THREE REFERENCE TIES TO DURABLE PHYSICAL OBJECTS, RELEVANT MONUMENTS AND PHYSICAL  
CONDITIONS THAT WILL ENABLE RECOVERY OF THE CORNER.)

## PLAN VIEW



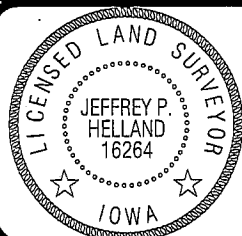
(NOT TO SCALE)



## LEGEND

(0.0')± PER AUDITOR'S SURVEY RECORD BK 1 PG 455 DATED 5/11/1870

(BEARINGS ARE ASSUMED)

HELLAND ENGINEERING & SURVEYING, LTD.  
1107 Technology Parkway  
Cedar Falls, Iowa 50613-6951  
(319)-266-0161SHINER = 8D NAIL & 1 5/16"Ø METAL SHINER  
BRASS TAG = 13/16"Ø BRASS TAG  
OPC = PLASTIC CAP (O=ORANGE, R=RED, Y=YELLOW)  
(00') RECORDED AS FILE NAME: 08-180C3.DWGI hereby certify that this land surveying document was prepared  
and the related survey work was performed by me or under my  
direct personal supervision and that I am a duly licensed Land  
Surveyor under the laws of the State of Iowa.*Jeffrey P. Helland 6/5/08*  
Jeffrey P. Helland  
License Number 16264  
My license renewal date is December 31, 2009.  
All pages or sheets are covered by this seal except:

## LIST CORNERS TO BE INDEXED

CORNER	SECTION	TOWNSHIP	RANGE
CENTER	18	88N	14W