

WAYNE CLAASSEN ENGINEERING AND SURVEYING, INC.
P.O. BOX 898 WATERLOO, IOWA 50704-0898

UNITED STATES PUBLIC LAND SURVEY CORNER CERTIFICATE

Land Survey Monuments situated in Section 17, Township 88 North, Range 14 West, of the Fifth Principal Meridian, Black Hawk County County, Iowa.

Previously recorded in N/A in County Recorder's Office.
(book, page, document number, etc.)

(Show reason for preparing this certificate, the evidence and detailed procedures used in establishing the corner positions and monumentation found or placed.)

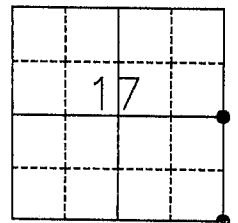
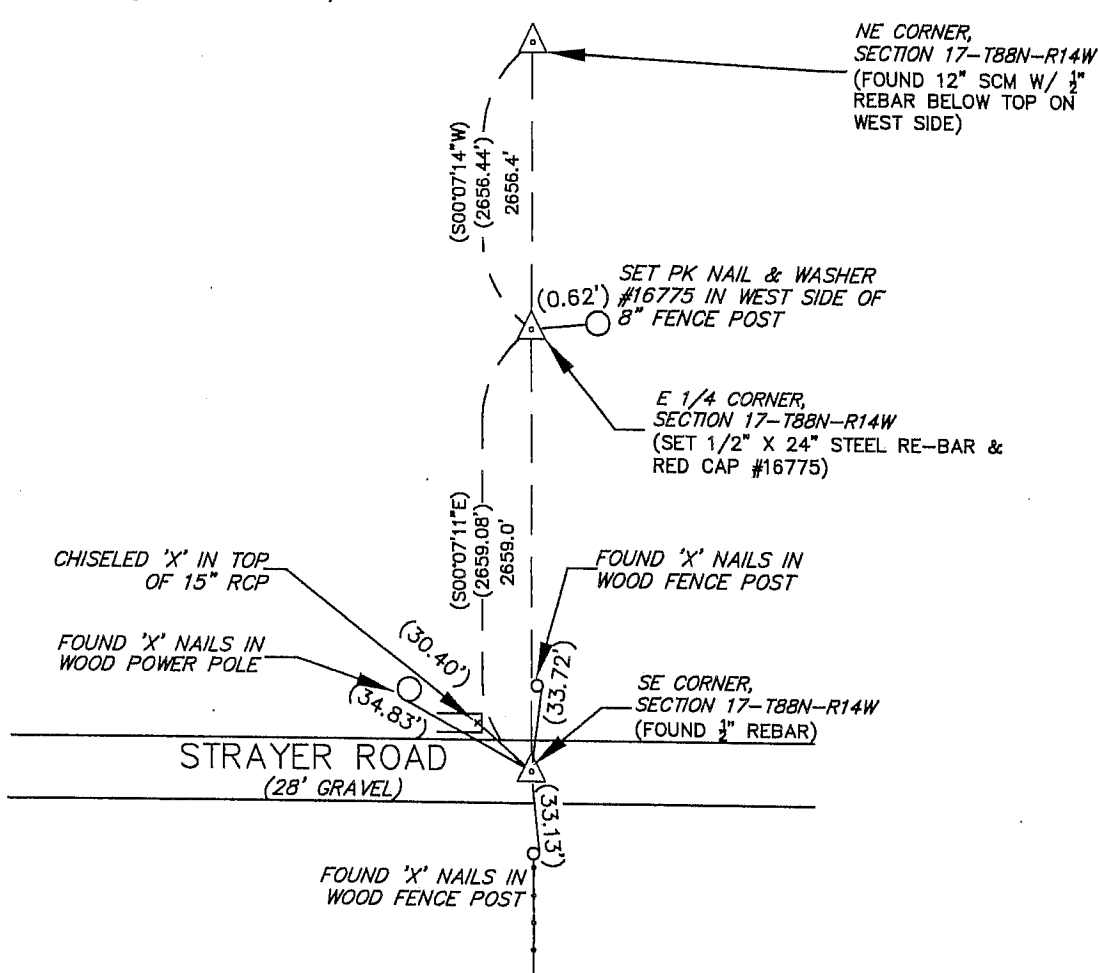
Monument Description and Remarks

E 1/4 Corner: No corner certificate on file. Set 1/2" X 24" steel re-bar and red cap #16775 as per ties Black Hawk County Engineer's Office field notes.

SE Corner: No corner certificate on file. Found 1/2" rebar as per ties Black Hawk County Engineer's Office field notes.

PLAN - VIEW

(Show a minimum of three reference ties to durable physical objects, relevant monuments and physical conditions that will enable recovery of the corner.)



BK 578, PG. 79

I hereby certify that this land surveying document was prepared and the related survey work was performed by me or under my direct personal supervision and that I am a duly Licensed Land Surveyor under the laws of the State of Iowa.

Signature: David L. Schell
David L. Schell, L.S.

Date: June 12, 2007 Lic. No. 16775

Pages or Sheets Covered by this Seal: THIS SHEET ONLY.

My license renewal date is December 31, 2008

SEAL

List Corners to be Indexed

Corners	Section	Twp	Range
SE CORNER,	17	88 N	14 W
E 1/4 CORNER,	17	88 N	14 W

