

SC  
MISC  
INDEX 517  
MARGIN  
PROOF  
COMPARE

BLACK HAWK COUNTY IOWA: ss **016319**  
Filed for record DEC 18, 2001 at  
3:30 P.M. and recorded in Book 345  
of MISC at page 59.  
*C. J. Claassen* Recorder  
FEE 1-5.00/ SLSI 9-90

UNITED STATES PUBLIC LAND SURVEY CORNER CERTIFICATE  
OF  
WAYNE CLAASSEN ENGINEERING AND SURVEYING INC

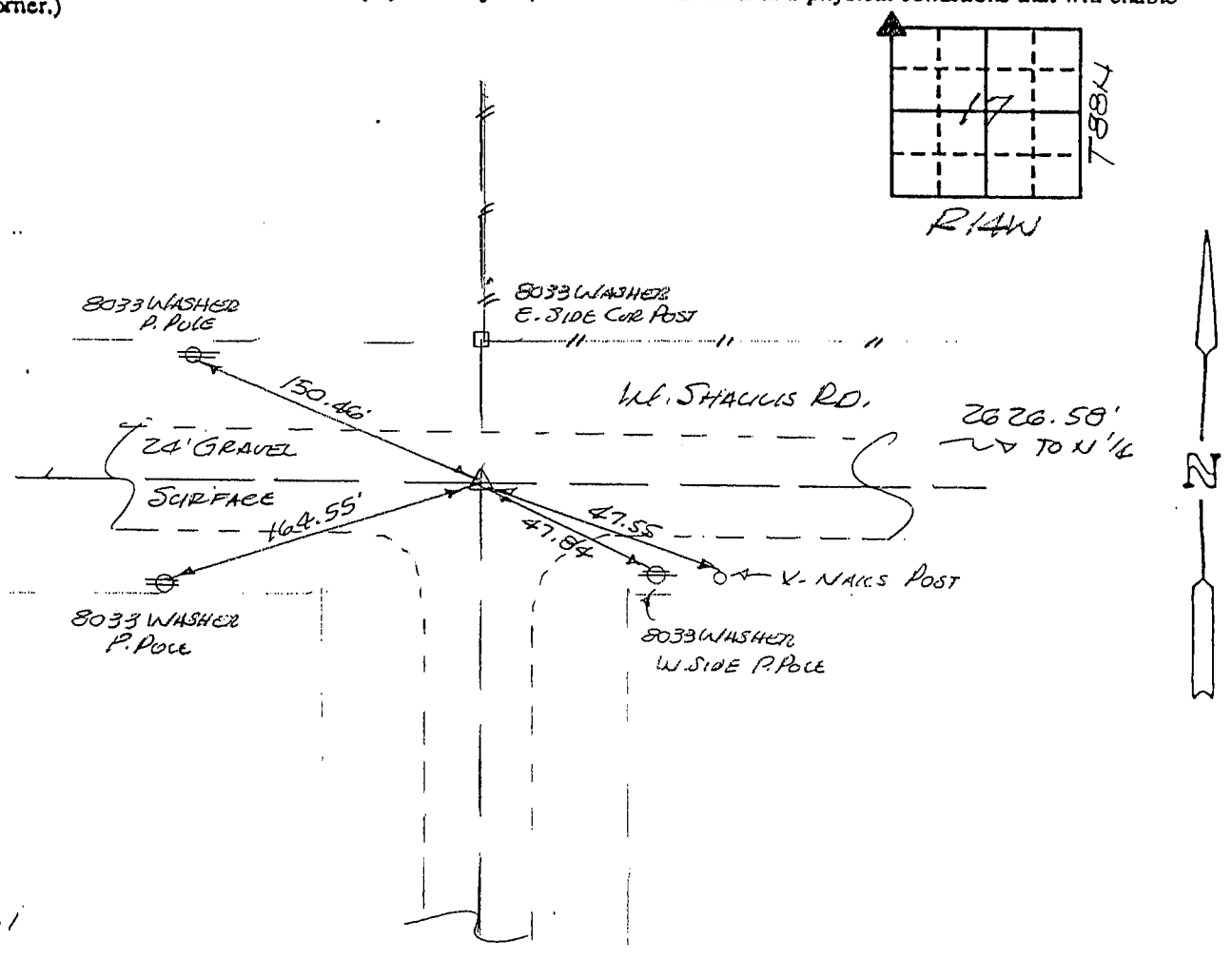
Land Survey Monuments situated in Section 17, Township 88N, Range 14W, of the Fifth Principal Meridian, BLACK HAWK County, Iowa.  
Previously recorded in N/A in County Recorder's Office.  
(book, page, document number, etc.)

(Show reason for preparing this certificate, the evidence and detailed procedures used in establishing the corner positions and monumentation found or placed.)

Monument Description and Remarks: NW CORNER, FOUND 5CM 2 1/2" DEEP, SET  
1 1/2" & REBAR & CAP NO. 8033 OVER.

PLAN - VIEW

(Show a minimum of three reference ties to durable physical objects, relevant monuments and physical conditions that will enable recovery of the corner.)



518-61

I hereby certify that the survey work was completed and this certificate was prepared by me or under my direct personal supervision and that I am a duly registered land surveyor under the laws of the state of Iowa.  
Signature: *F. William King*  
Name typed or printed: F. WILLIAM KING  
Date: DEC. 17, 2001 Reg. No. 8033

Corners	List Corners to be Indexed	Section	Twp	Range
NW	17	88N	14W	

