

VAN WINKLE JACOB ENGINEERING INC 1501 TECHNOLOGY PARKWAY STE 100 CEDAR FALLS IA 50613

UNITED STATES PUBLIC LAND SURVEY CORNER CERTIFICATE
OF

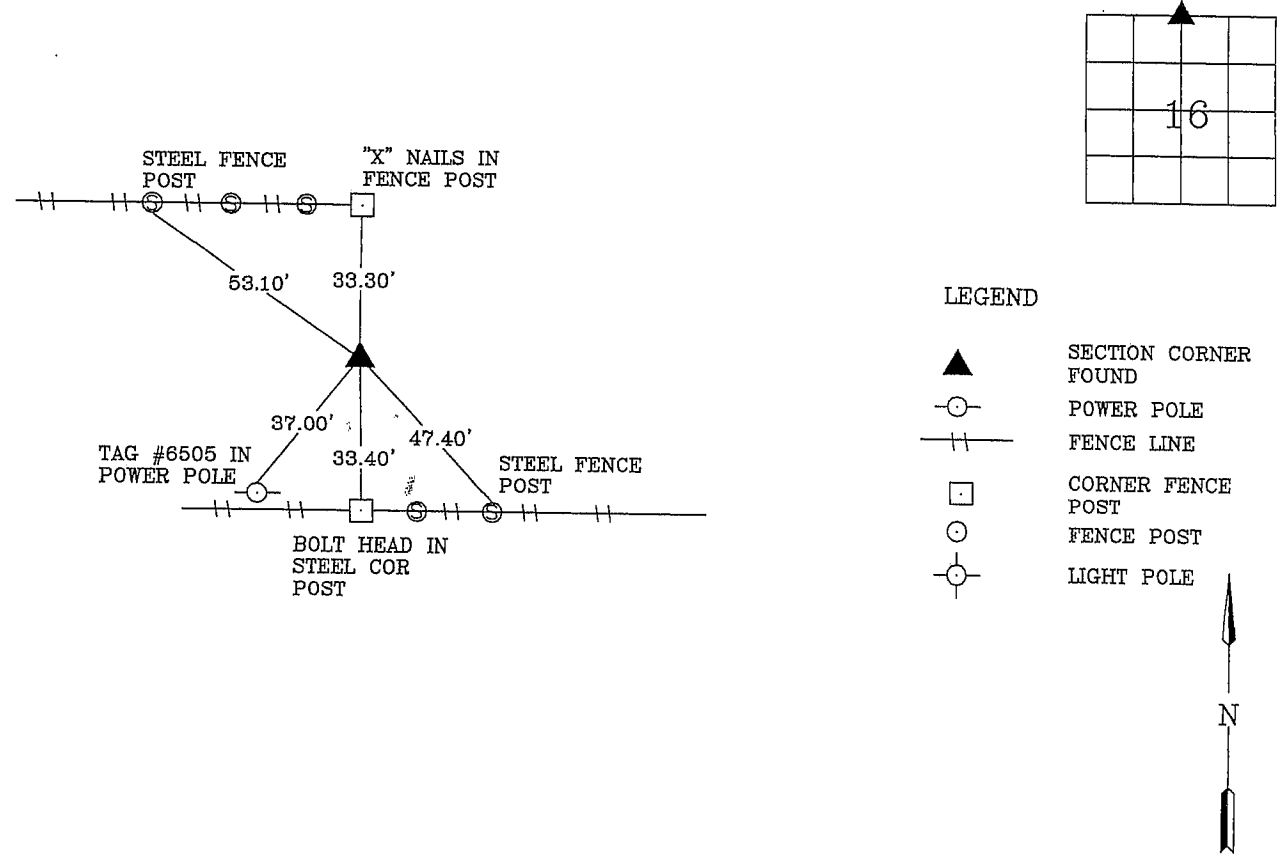
Land Survey Monuments situated in Section 16, Township 88 N, Range 14W, of the Fifth Principal Meridian, BLACK HAWK County, Iowa
Previously recorded in Book _____, Page _____.

Show reason for preparing this certificate, the evidence and detailed procedures used in establishing the corner positions and monumentation found or placed.)

Monument Description and Remarks: N CORNER - FOUND STANDARD CONCRETE MONUMENT 6" DEEP
NO CORNER CERTIFICATE ON FILE

PLAN - VIEW

(Show a minimum of three reference ties to durable physical objects, relevant monuments and physical conditions recovery of the corner.)



I hereby certify that the survey work was completed and this certificate was prepared by me or under my direct personal supervision and that I am a duly registered land surveyor under the laws of the state of Iowa.

Wendell J. Lupkes 11-25-02
LICENSED LAND SURVEYOR NO. 12088



List Corners to be Indexed

Corners	Section	Twp	Range
N	16	88	14