

INDEX BLACK HAWK COUNTY, IOWA:SS FEE BOOK # 2003 14894  
PROOF FILED FOR RECORD NOV 27 2002 AT 2:00 P M. FEE 1-5.00/  
COMPARED Patricia A. Lee BLACK HAWK COUNTY RECORDER

VAN WINKLE JACOB ENGINEERING 1501 TECHNOLOGY PARKWAY STE 100 CEDAR FALLS IOWA 50613

# UNITED STATES PUBLIC LAND SURVEY CORNER CERTIFICATE OF

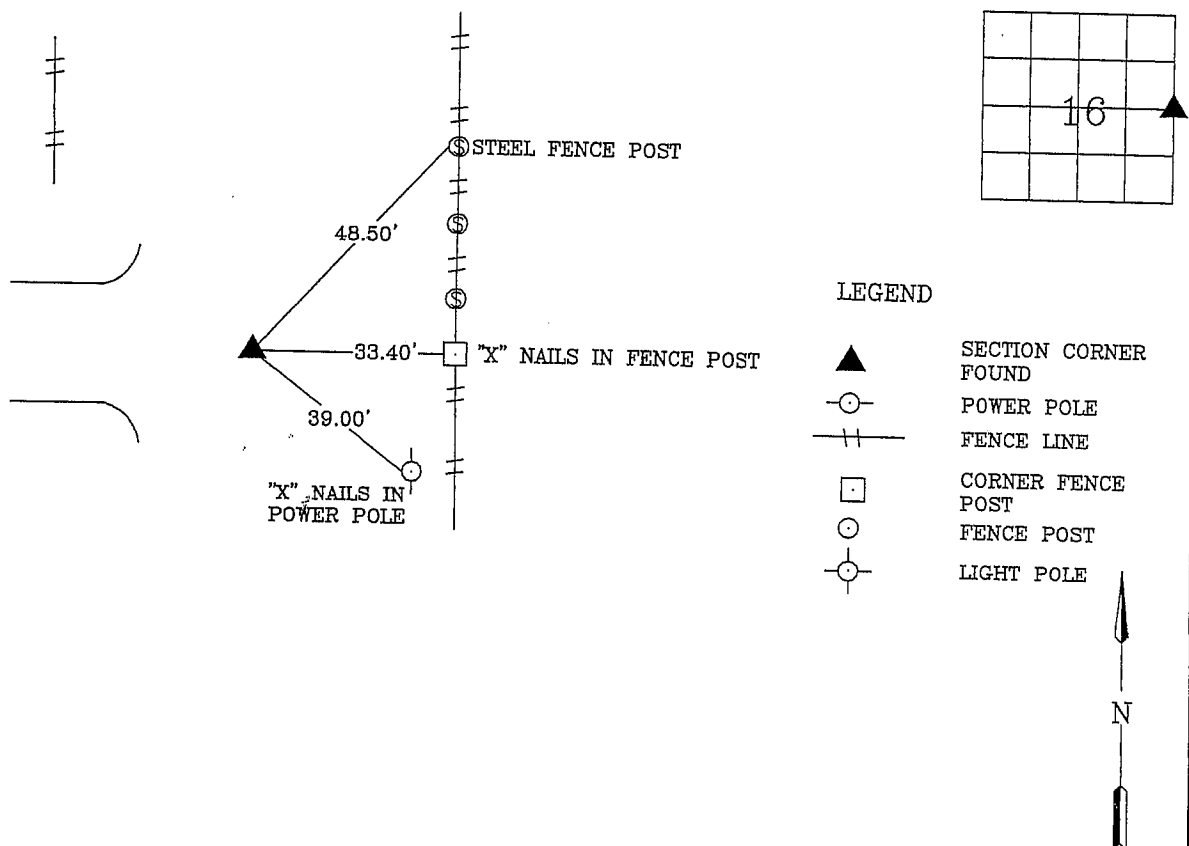
Land Survey Monuments situated in Section 16, Township 88 N, Range 14W, of the Fifth Principal Meridian, BLACK HAWK County, Iowa  
Previously recorded in Book \_\_\_\_\_, Page \_\_\_\_\_.

Show reason for preparing this certificate, the evidence and detailed procedures used in establishing the corner positions and monumentation found or placed.)

Monument Description and Remarks: E 1/4 CORNER - FOUND STANDARD CONCRETE MONUMENT 1.0' DEEP  
NO CORNER CERTIFICATE ON FILE

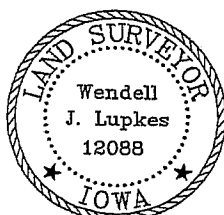
## PLAN - VIEW

(Show a minimum of three reference ties to durable physical objects, relevant monuments and physical conditions recovery of the corner.)



I hereby certify that the survey work was completed and this certificate was prepared by me or under my direct personal supervision and that I am a duly registered land surveyor under the laws of the state of Iowa.

Wendell J. Lupkes 11-25-02  
LICENSED LAND SURVEYOR NO. 12088



### List Corners to be Indexed

Corners	Section	Twp	Range
E	16	88	14

**VJ** Van Winkle - Jacob Engineering, Inc.  
6221 CHANCELLOR DRIVE  
CEDAR FALLS, IOWA - 319-266-5829

SECTION CORNER  
REFERENCE TIES

SCALE  
SCALE  
DRAWN BY  
MAK  
DATE  
11-21-02