

Reserved for County Recorder's use

2024-23901

RECORDED: 11/26/2024 08:57:05 AM

RECORDING FEE: \$7.00

REVENUE TAX: \$

COMBINED FEE: \$7.00

SANDIE L. SMITH, RECORDER

BLACK HAWK COUNTY, IOWA

Kyle J. Helland, 6109 Chancellor Drive, Cedar Falls, Iowa 50613-6916, (319)-266-0161

## UNITED STATES PUBLIC LAND SURVEY CORNER CERTIFICATE OF

LAND SURVEY MONUMENTS SITUATED IN SECTION NO 15, TOWNSHIP NO 88 NORTH, RANGE  
NO 14 WEST OF THE FIFTH PRINCIPAL MERIDIAN, BLACK HAWK COUNTY, IOWA  
PREVIOUSLY RECORDED IN N/A

(SHOW REASON FOR PREPARING THIS CERTIFICATE, THE EVIDENCE AND DETAILED PROCEDURES USED IN ESTABLISHING THE  
CORNER POSITIONS AND MONUMENTATION FOUND OR PLACED )

### MONUMENT DESCRIPTION AND REMARKS

NO USPLSCC ON FILE SURVEY COMPLETED IN THE S 1/2 SW 1/4 OF SEC 15-T88N-R14W

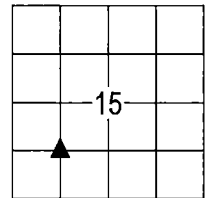
→ **NE CORNER SW 1/4 SW 1/4** · NO BLACK HAWK COUNTY ENGINEER TIES ARE AVAILABLE FINAL PLAT OF SURVEY RED  
TAIL ADDITION DATED 01/08/2008 CALLS FOR [SET 1/2" x 24" REBAR AND RED CAP #16775] TALKED TO DAVID L SCHEIL  
(SURVEYOR OF RED TAIL HAWK ADDITION) AND HE SAID HE DID NOT SET ANY MONUMENTS AS THE PLATTING PROCESS  
AND APPROVAL WAS DETERMINED TO BE INVALID BY STATE OF IOWA COURTS SEARCHED AREA WITH METAL  
DETECTOR NOTHING FOUND, THEREFORE SET 1/2" REBAR w/OPC #23212 EQUAL DISTANCE IN FENCE LINE RUNNING  
EAST-WEST BETWEEN THE NW CORNER OF THE SW 1/4 SW 1/4 AND THE NE CORNER OF THE SE 1/4 SW 1/4 OF SAID  
SECTION 15-T88N-R14W AND UTILIZED AS CORNER

### PLAN VIEW

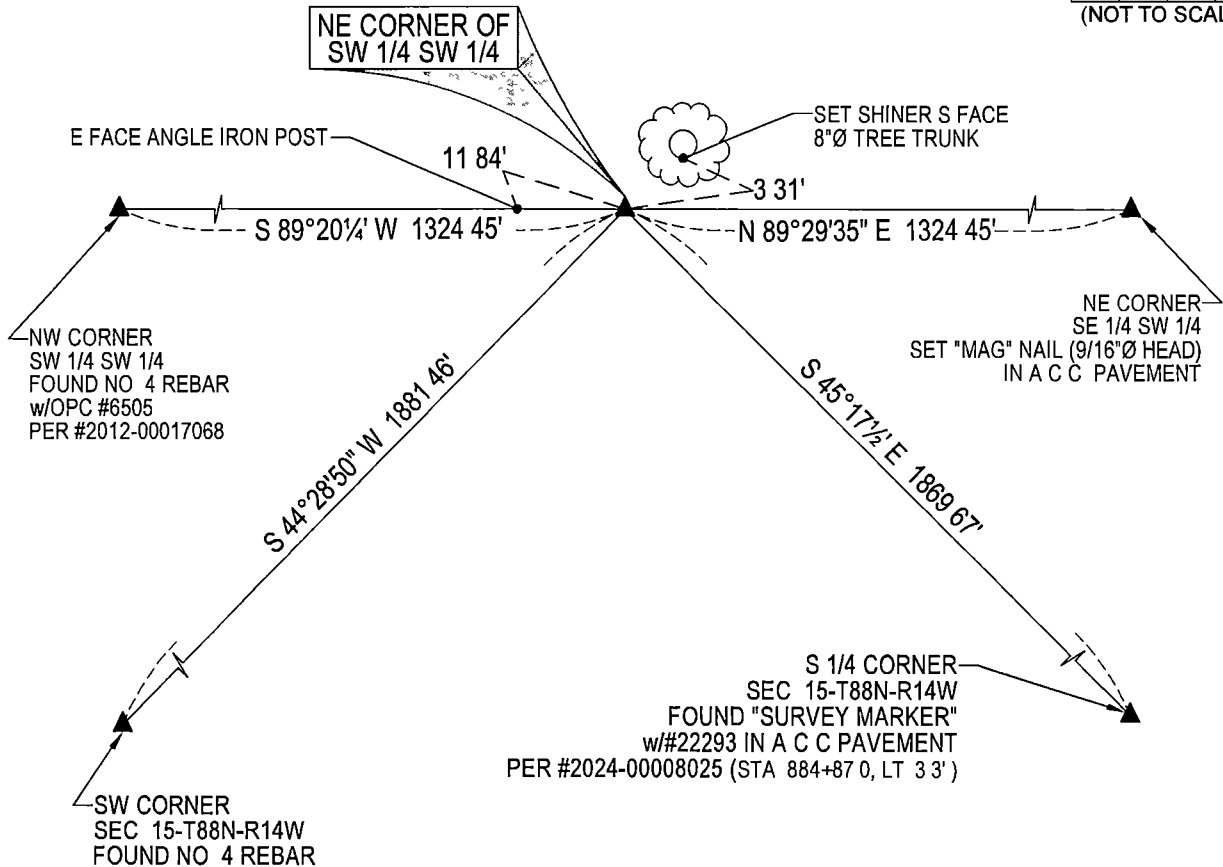
(SHOW A MINIMUM OF THREE REFERENCE TIES TO DURABLE PHYSICAL OBJECTS, RELEVANT MONUMENTS AND PHYSICAL  
CONDITIONS THAT WILL ENABLE RECOVERY OF THE CORNER )

NO OTHER DURABLE, GERMANE  
PHYSICAL OBJECTS TO REFERENCE TO

SEE ASSOCIATED PLAT OF SURVEY  
FOR "RECORDED AS" INFORMATION



(NOT TO SCALE)



(BEARINGS ARE ASSUMED)



HELLAND ENGINEERING & SURVEYING, LTD.  
6109 Chancellor Drive  
Cedar Falls, Iowa 50613-6916  
(319)-266-0161

BRASS TAG = 4d NAIL & 13/16" Ø BRASS TAG DRAWN BY CDR  
SHINER = 1" Ø STEEL SHINER w/MASONRY NAIL  
OPC = PLASTIC CAP (O=ORANGE, R=RED, Y=YELLOW)  
(00) RECORDED AS FILE NAME 24-225-55 DWG



I hereby certify that this land surveying document was prepared  
and the related survey work was performed by me or under my  
direct personal supervision and that I am a duly licensed  
Professional Land Surveyor under the laws of the State of Iowa.  
*Kyle J. Helland*  
Kyle J. Helland  
License Number 23212  
My license renewal date is December 31, 2025  
All pages or sheets are covered by this seal except

### LIST CORNERS TO BE INDEXED

CORNER	SECTION / TOWNSHIP / RANGE		
NE COR SW 1/4 SW 1/4	15	88N	14W
SE COR NW 1/4 SW 1/4	15	88N	14W
SW COR NE 1/4 SW 1/4	15	88N	14W
NW COR SE 1/4 SW 1/4	15	88N	14W