

BLACK HAWK COUNTY IOWA, SS:
 Filed for record JAN 31, 2002 at
12:30 P.M and recorded in Book
 of at Page

INDEX
 MARGIN
 PROOF
 COMPARE

Paul H. Helland Recorder
 FEE 1-5.00/
 HELLAND ENGINEERING & SURVEYING LTD

Paul H. Helland, 1107 Technology Parkway, Cedar Falls, Iowa 50613-6951, (319)-266-0161

UNITED STATES PUBLIC LAND SURVEY CORNER CERTIFICATE OF

LAND SURVEY MONUMENTS SITUATED IN SECTION NO. 15, TOWNSHIP NO. 88 NORTH, RANGE
 NO. 14 WEST OF THE FIFTH PRINCIPAL MERIDIAN, BLACK HAWK COUNTY, IOWA.

PREVIOUSLY RECORDED IN BOOK , PAGE .

(SHOW REASON FOR PREPARING THIS CERTIFICATE, THE EVIDENCE AND DETAILED PROCEDURES USED IN ESTABLISHING THE
 CORNER POSITIONS AND MONUMENTATION FOUND OR PLACED.)

MONUMENT DESCRIPTION AND REMARKS:

SURVEY DONE IN SE 1/4 NE 1/4 OF SEC. 15-T88N-R14W.

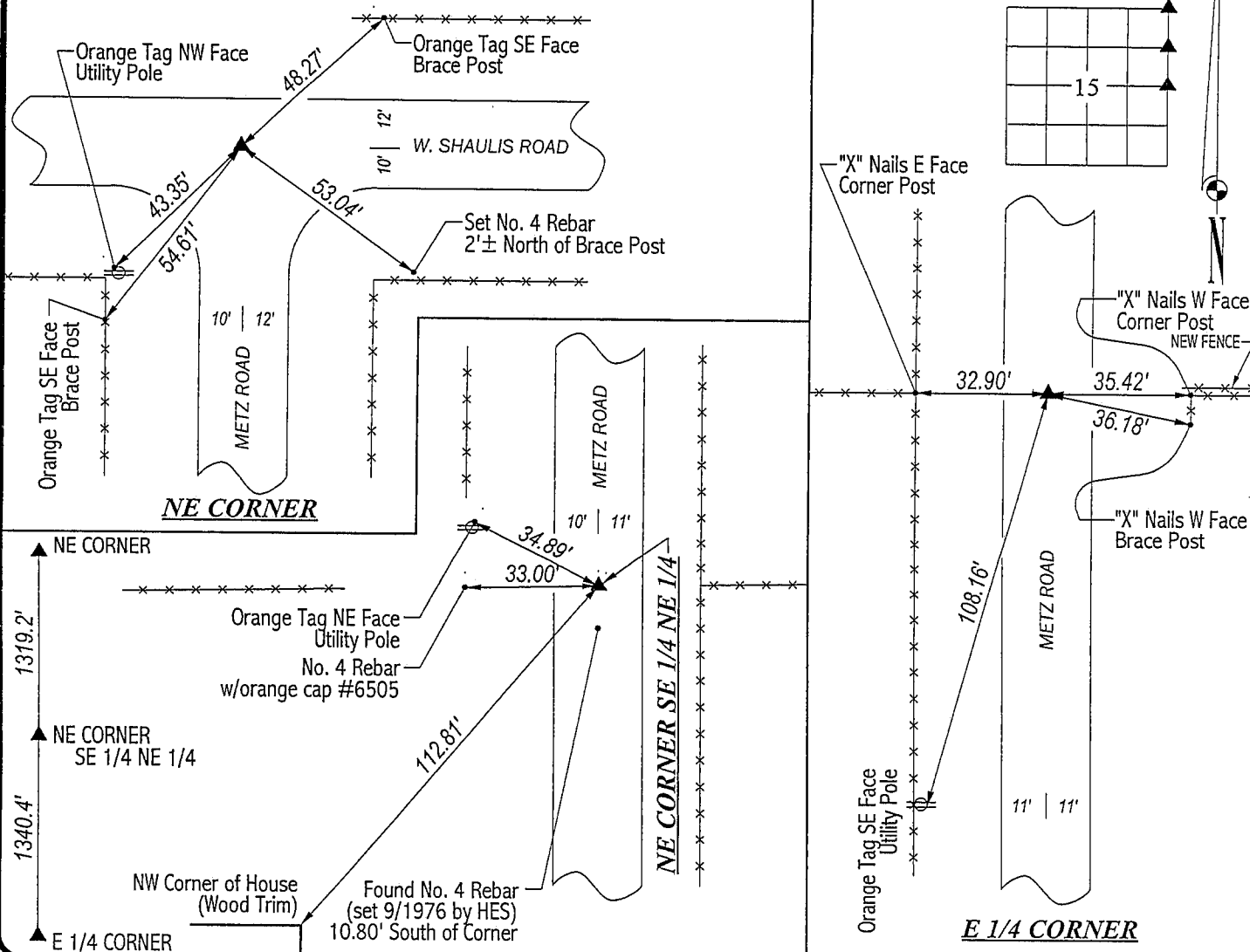
NE CORNER: Black Hawk County Engineer reference ties dated 5/2/1958 lost. A pipe was found above a concrete monument
 in 9/1976 by HES. Found 1"Ø pinched pipe w/pink flagging 0.4' deep.

NE CORNER OF SE 1/4 NE 1/4: No Black Hawk County Engineer reference ties. Set No. 4 rebar w/orange cap #6505 on straight
 line between the NE Corner & E 1/4 Corner and in line w/fences East and West, (East fence in same location as per WPA notes).

E 1/4 CORNER: Black Hawk County Engineer reference ties (no date) lost. A pipe was found above a concrete monument
 in 9/1976 by HES. Found 1"Ø pinched pipe w/pink paint 0.2' deep.

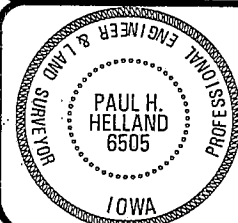
PLAN VIEW

(SHOW A MINIMUM OF THREE REFERENCE TIES TO DURABLE PHYSICAL OBJECTS, RELEVANT MONUMENTS AND PHYSICAL
 CONDITIONS THAT WILL ENABLE RECOVERY OF THE CORNER.)



HELLAND ENGINEERING & SURVEYING, LTD.
 1107 Technology Parkway
 Cedar Falls, Iowa 50613-6951
 (319)-266-0161

FILE NAME: 01-315CC.DRG



I hereby certify that this land surveying document was prepared
 and the related survey work was performed by me or under my
 direct personal supervision and that I am a duly licensed Land
 Surveyor under the laws of the State of Iowa.

Paul H. Helland
 Paul H. Helland
 License Number 6505

My license renewal date is December 31, 2003.
 All pages or sheets are covered by this seal except:

LIST CORNERS TO BE INDEXED

CORNER	SECTION	TOWNSHIP	RANGE
NE CORNER	15	88N	14W
NE CORNER	15	88N	14W
SE 1/4 NE 1/4			
NE CORNER	15	88N	14W