

Jeffrey P. Helland, 1107 Technology Parkway, Cedar Falls, Iowa 50613-6951, (319)-266-0161

UNITED STATES PUBLIC LAND SURVEY CORNER CERTIFICATE
OFLAND SURVEY MONUMENTS SITUATED IN SECTION NO. 15, TOWNSHIP NO. 88 NORTH, RANGE
NO. 14 WEST OF THE FIFTH PRINCIPAL MERIDIAN, BLACK HAWK COUNTY, IOWA.

PREVIOUSLY RECORDED IN _____

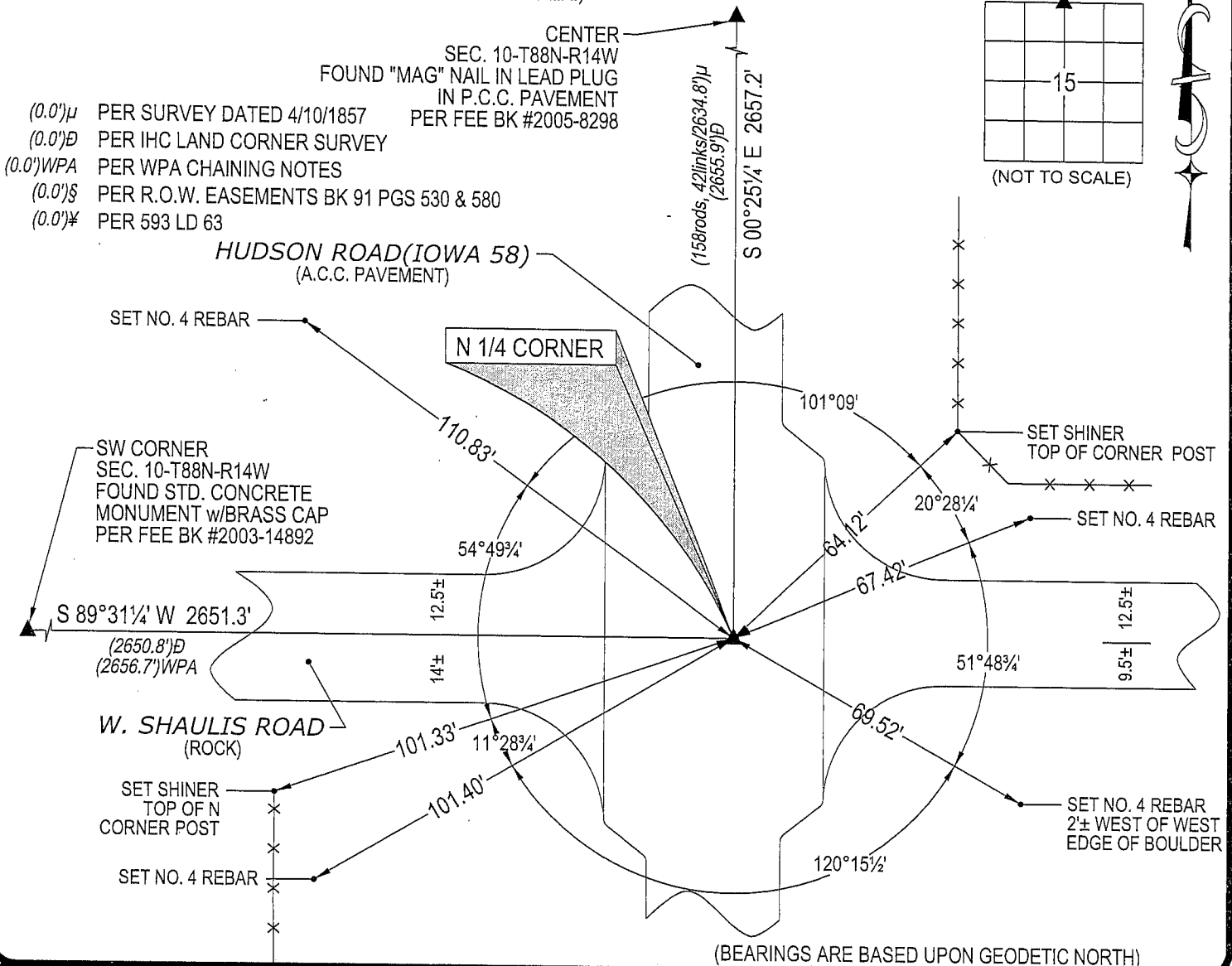
(SHOW REASON FOR PREPARING THIS CERTIFICATE, THE EVIDENCE AND DETAILED PROCEDURES USED IN ESTABLISHING THE
CORNER POSITIONS AND MONUMENTATION FOUND OR PLACED.)

MONUMENT DESCRIPTION AND REMARKS:

NO USPLSCC ON FILE. SURVEY COMPLETED IN THE N 1/2 SW 1/4 OF SEC. 10-T88N-R14W.

→ **N 1/4 CORNER:** IHC LAND CORNER SURVEY CALLS FOR [SET 10"x13"x39" GRANITE OVER 1/2"x30" TWISTED
IRON PIN] 4.2 RT OF CENTERLINE. BLACK HAWK COUNTY ENGINEER REFERENCE TIES DATED 10/2/1938
CALLS FOR [FOUND TWO IRON BARS BOTH 5/8"x24" AND WERE 3 1/4" APART. SET C.M. ON POINT BETWEEN
BARS 12" UNDERGROUND]. ALL REFERENCE TIES HAVE BEEN OBLITERATED. FOUND 1" LONG ASPHALT NAIL
IN A.C.C. PAVEMENT (ORIGIN UNKNOWN) CORRESPONDING TO POSITION OF WPA CHAINING NOTES AND IHC
LAND CORNER SURVEY, REPLACED w/"MAG" NAIL. CORNER IS 4.2' EAST OF APPROXIMATE CENTERLINE
JOINT.

PLAN VIEW

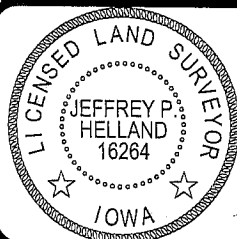
(SHOW A MINIMUM OF THREE REFERENCE TIES TO DURABLE PHYSICAL OBJECTS, RELEVANT MONUMENTS AND PHYSICAL
CONDITIONS THAT WILL ENABLE RECOVERY OF THE CORNER.)

(BEARINGS ARE BASED UPON GEODETIC NORTH)

HELLAND ENGINEERING & SURVEYING, LTD.
1107 Technology Parkway
Cedar Falls, Iowa 50613-6951
(319)-266-0161SHINER = 8D NAIL & 1 15/16"Ø METAL SHINER
OPC = PLASTIC CAP (O=ORANGE, R=RED, Y=YELLOW)

(00') RECORDED AS

FILE NAME: 06-212C2.DWG

I hereby certify that this land surveying document was prepared
and the related survey work was performed by me or under my
direct personal supervision and that I am a duly licensed Land
Surveyor under the laws of the State of Iowa.Jeffrey P. Helland 7/20/06
License Number 16264My license renewal date is December 31, 2007.
All pages or sheets are covered by this seal except:

LIST CORNERS TO BE INDEXED

CORNER	SECTION	TOWNSHIP	RANGE
N 1/4 CORNER	15	88N	14W