

Reserved for County Recorder's use

2024-23900

RECORDED: 11/26/2024 08:57:04 AM

RECORDING FEE: \$7.00

REVENUE TAX: \$

COMBINED FEE: \$7.00

SANDIE L. SMITH, RECORDER
BLACK HAWK COUNTY, IOWA

* Kyle J. Helland, 6109 Chancellor Drive, Cedar Falls, Iowa 50613-6916, (319)-266-0161

UNITED STATES PUBLIC LAND SURVEY CORNER CERTIFICATE OF

LAND SURVEY MONUMENTS SITUATED IN SECTION NO 15, TOWNSHIP NO 88 NORTH, RANGE
NO 14 WEST OF THE FIFTH PRINCIPAL MERIDIAN, BLACK HAWK COUNTY, IOWA
PREVIOUSLY RECORDED IN N/A

(SHOW REASON FOR PREPARING THIS CERTIFICATE, THE EVIDENCE AND DETAILED PROCEDURES USED IN ESTABLISHING THE
CORNER POSITIONS AND MONUMENTATION FOUND OR PLACED)

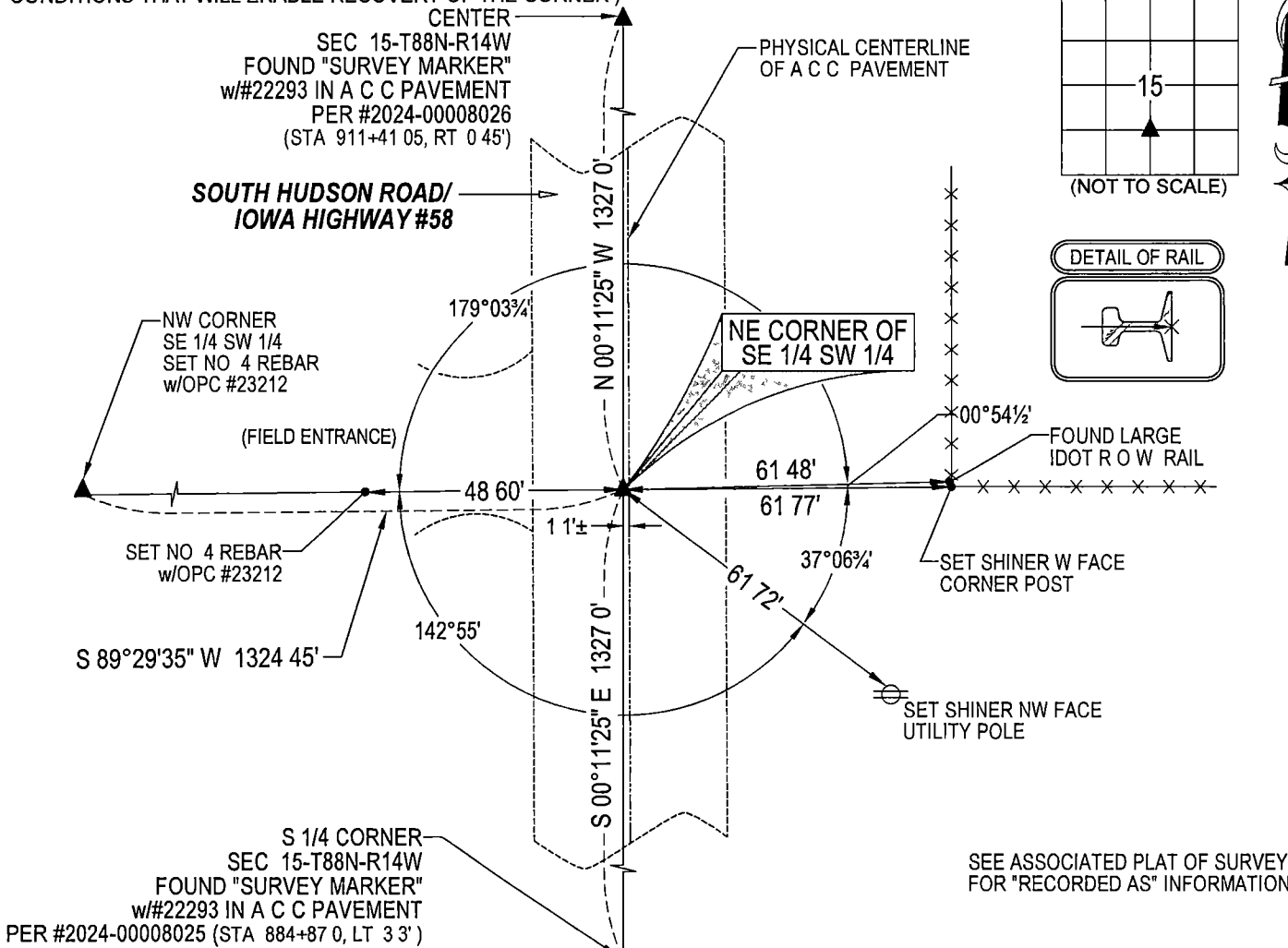
MONUMENT DESCRIPTION AND REMARKS

NO USPLSCC ON FILE SURVEY COMPLETED IN THE S 1/2 SW 1/4 OF SEC 15-T88N-R14W

NE CORNER SE 1/4 SW 1/4 : NO BLACK HAWK COUNTY ENGINEER TIES ARE AVAILABLE NOR ANY OTHER PUBLIC
DOCUMENTATION OF THE HISTORY AND PERPETUATION OF CORNER WAS AVAILABLE SEARCHED AREA WITH METAL
DETECTOR NOTHING FOUND, THEREFORE SET "MAG" NAIL (9/16"Ø HEAD) IN A C C PAVEMENT ON LINE AND AT
MIDPOINT BETWEEN THE E 1/4 CORNER AND SE CORNER OF SAID SECTION 15-T88N-R14W AND UTILIZED AS CORNER

PLAN VIEW

(SHOW A MINIMUM OF THREE REFERENCE TIES TO DURABLE PHYSICAL OBJECTS, RELEVANT MONUMENTS AND PHYSICAL
CONDITIONS THAT WILL ENABLE RECOVERY OF THE CORNER)



HELLAND ENGINEERING & SURVEYING, LTD.
6109 Chancellor Drive
Cedar Falls, Iowa 50613-6916
(319)-266-0161

BRASS TAG = 4d NAIL & 13/16"Ø BRASS TAG DRAWN BY CDR
SHINER = 1"Ø STEEL SHINER w/MASONRY NAIL
OPC = PLASTIC CAP (O=ORANGE, R=RED, Y=YELLOW)
(00') RECORDED AS FILE NAME 24-225-52 DWG



I hereby certify that this land surveying document was prepared
and the related survey work was performed by me or under my
direct personal supervision and that I am a duly licensed
Professional Land Surveyor under the laws of the State of Iowa.
Kyle J. Helland 11/22/2024
License Number 23212
My license renewal date is December 31, 2025
All pages or sheets are covered by this seal except

LIST CORNERS TO BE INDEXED			
CORNER	SECTION / TOWNSHIP / RANGE		
NE COR SE 1/4 SW 1/4	15	88N	14W
SE COR NE 1/4 SW 1/4	15	88N	14W
SW COR NW 1/4 SE 1/4	15	88N	14W
NW COR SW 1/4 SE 1/4	15	88N	14W