

WAYNE CLAASSEN ENGINEERING AND SURVEYING, INC.  
P.O. BOX 898 WATERLOO, IOWA 50704-0898

PHONE: (VOICE) 319-235-6294  
(FAX) 319-235-0028

## UNITED STATES PUBLIC LAND SURVEY CORNER CERTIFICATE

Land Survey Monuments situated in Section 14, Township 88 North, Range 14 West, of the Fifth Principal Meridian, Black Hawk County, Iowa.

Previously recorded in \_\_\_\_\_ (book, page, document number, etc.) in County Recorder's Office.

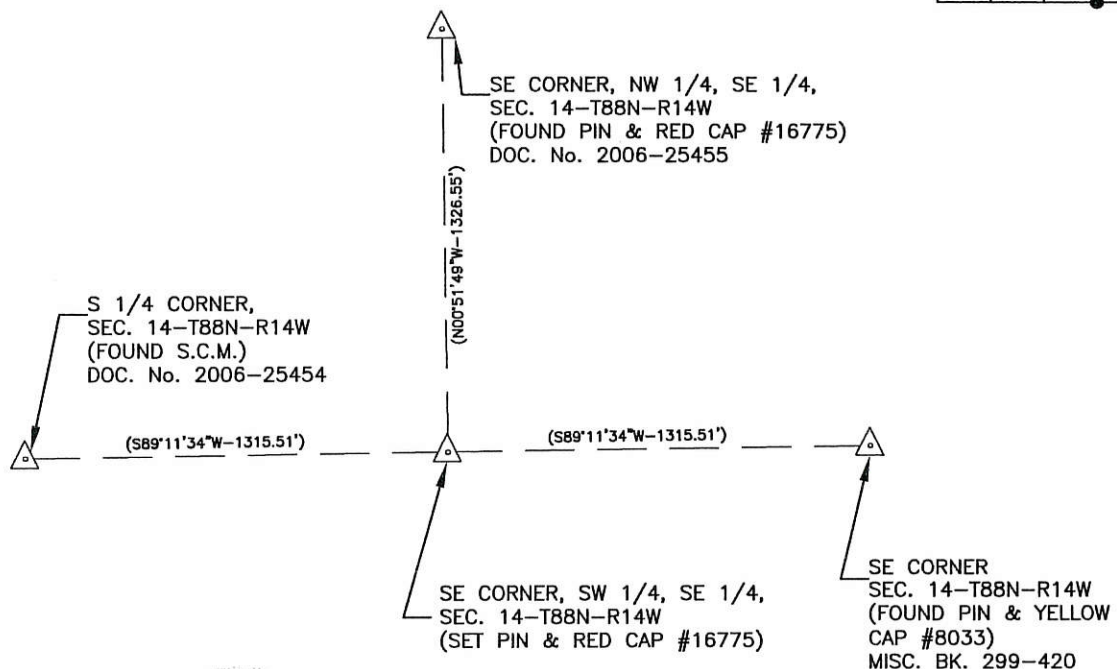
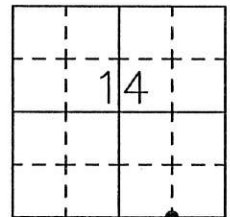
### Monument Description and Remarks

Set 1/2"x24" steel rebar and red cap #16775 at midpoint between East 1/4 Corner and the Center of Section 14-T88N-R14W.

### PLAN - VIEW

Reason for filing certificate:

- ☒ There is no certificate on file with the Recorder's Office.  
☐ Accepts corner position which differs from the one shown in above document.  
☐ The corner monument was replaced or modified.  
☐ The reference ties in above document were incorrect or missing.



IOWA STATE PLANE  
COORDINATE SYSTEM  
NORTH ZONE  
N 3620940  
E 5206992  
(FOR REFERENCE ONLY)

748-36



I hereby certify that this land surveying document was prepared and the related survey work was performed by me or under my direct personal supervision and that I am a duly Licensed Land Surveyor under the laws of the State of Iowa.

Signature: David L. Scheil  
David L. Scheil, L.S.

Date: DEC 14, 2017 Lic. No. 16775

Pages or Sheets Covered by this Seal: THIS SHEET ONLY.

My license renewal date is December 31, 2018

SEAL

### List Corners to be Indexed

Corners	Section	Twp	Range
SE CORNER, SW 1/4, SE 1/4,	14	88 N	14 W
NE CORNER, NW 1/4, NE 1/4,	23	88 N	14 W