

Recorded

SLSI 9-90

# UNITED STATES PUBLIC LAND SURVEY CORNER CERTIFICATE

OF

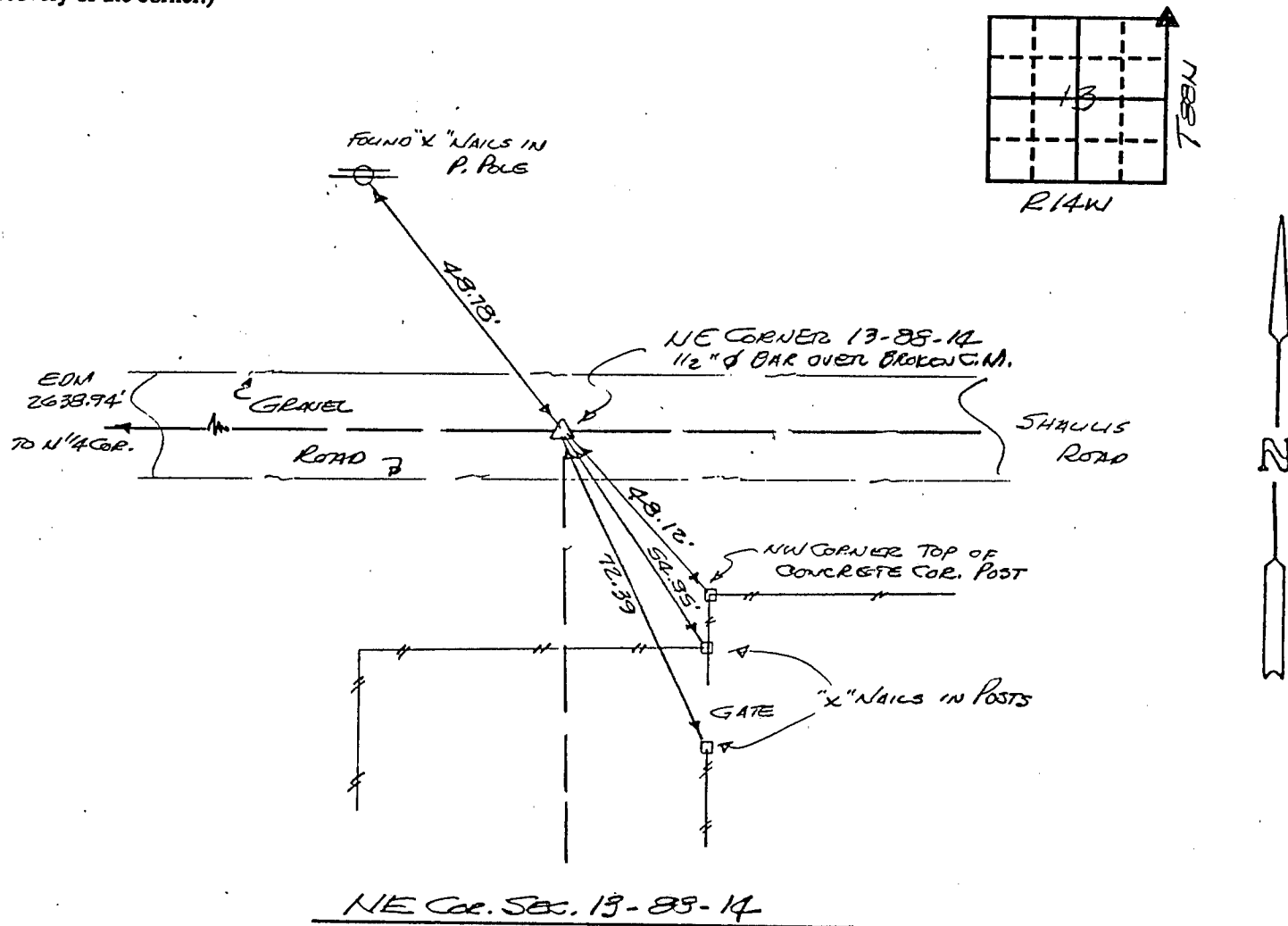
Land Survey Monuments situated in Section 13, Township 88N, Range 14W, of the Fifth Principal Meridian, BLACK HAWK County, Iowa.  
Previously recorded in N/A in County Recorder's Office.

(book, page, document number, etc.)  
Show reason for preparing this certificate, the evidence and detailed procedures used in establishing the corner positions and monumentation found or placed.)

Monument Description and Remarks: FOUND 1/2" Ø REBAR 1" DEEP PER CES RECORD.  
2-24-1994 CES FOUND BROKEN CONC. MON BASE 21" DEEP - SET 1/2" Ø BAR OVER.

## PLAN - VIEW

(Show a minimum of three reference ties to durable physical objects, relevant monuments and physical conditions that will enable recovery of the corner.)



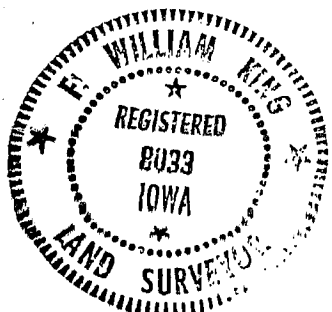
I hereby certify that the survey work was completed and this certificate was prepared by me or under my direct personal supervision and that I am a duly registered land surveyor under the laws of the state of Iowa.

Signature: F. William King  
Name typed or printed: F. WILLIAM KING

Date: 1-4-1991 Reg. No. 8033

Corners	List Corners to be Indexed		
	Section	Twp	Range
NE	13	88N	14W

SEAL



MISC. BK. 293 p. 997