

ENV

WAYNE CLAASSEN ENGINEERING AND SURVEYING, INC.  
P.O. BOX 898    WATERLOO, IOWA 50704-0898

PHONE: (VOICE) 319-235-6294

(FAX) 319-235-0028

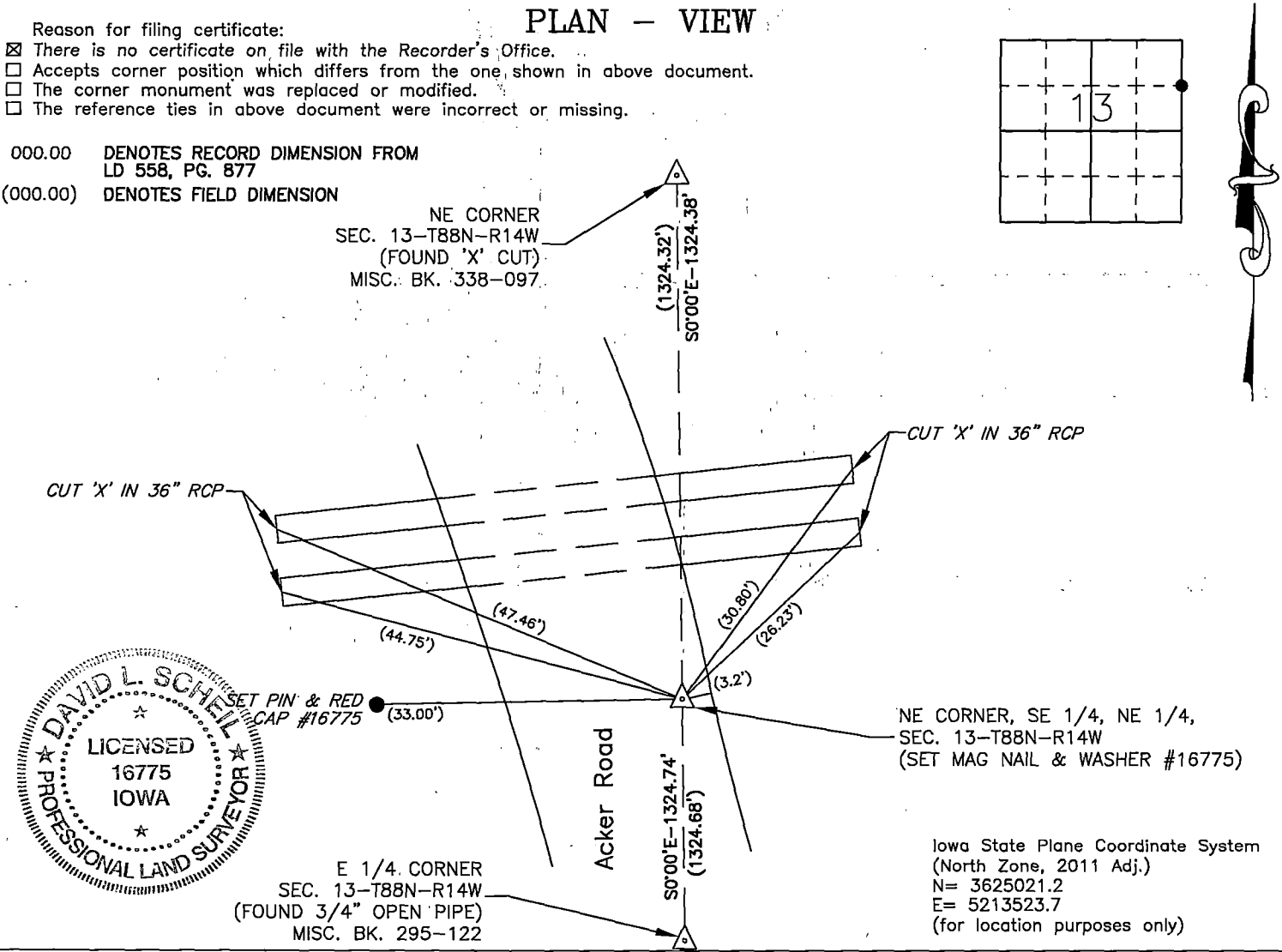
UNITED STATES PUBLIC LAND SURVEY CORNER CERTIFICATE

Land Survey Monuments situated in Section 13, Township 88 North, Range 14 West, of the Fifth Principal Meridian, Black Hawk County, Iowa.

Previously recorded in \_\_\_\_\_ in County Recorder's Office.  
(book, page, document number, etc.)

Monument Description and Remarks

Land Deed 558, Page 877 shows a iron pin found. Went to location of corner and found asphalt road and no monumentation. Set mag nail and washer #16775 based on said Land Deed,



I hereby certify that this land surveying document was prepared and the related survey work was performed by me or under my direct personal supervision and that I am a duly Licensed Land Surveyor under the laws of the State of Iowa.

Signature: David L. Schell  
David L. Schell, L.S.

Date: MARCH 25, 2022 Lic. No. 16775

Pages or Sheets Covered by this Seal: THIS SHEET ONLY.

My license renewal date is December 31, 2022

SEAL

List Corners to be Indexed			
Corners	Section	Twp	Range
NE CORNER, SE 1/4, NE 1/4,	13	88 N	14 W
NW CORNER, SW 1/4, NW 1/4,	18	88 N	13 W