

Recorded

SLSI 9-90

UNITED STATES PUBLIC LAND SURVEY CORNER CERTIFICATE

OF

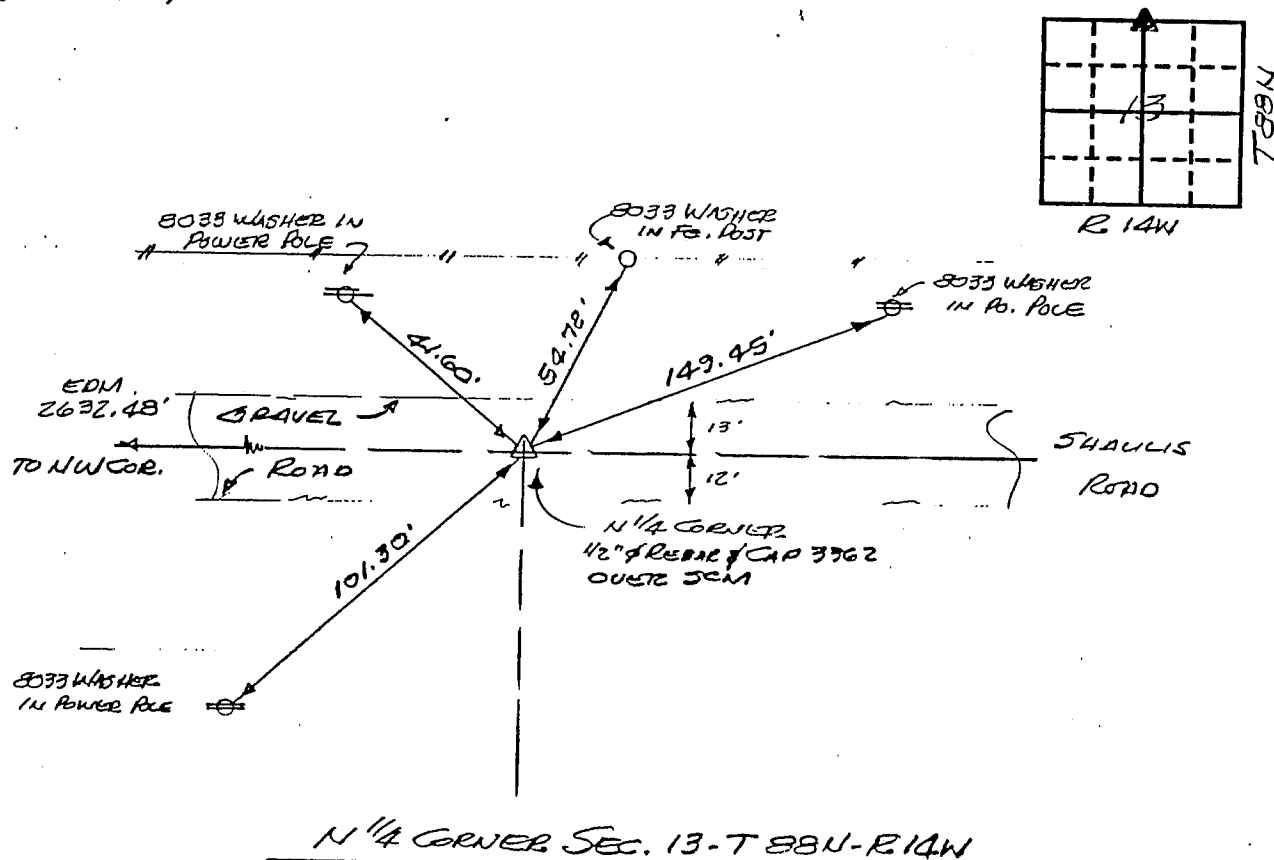
Land Survey Monuments situated in Section 13, Township 88N, Range 14W, of the Fifth Principal Meridian, BLACK HAWK County, Iowa.
Previously recorded in N/A in County Recorder's Office.

(book, page, document number, etc.)
show reason for preparing this certificate, the evidence and detailed procedures used in establishing the corner positions and monumentation found or placed.)

Monument Description and Remarks: FOUND 1/2" RED BAR w/ CAP No. 3362 PER CES
RECORD. 1-24-1984 CES FOUND CONC. MEN. 12" DEEP, SET 1/2" BAR OVER.

PLAN - VIEW

(Show a minimum of three reference ties to durable physical objects, relevant monuments and physical conditions that will enable recovery of the corner.)



I hereby certify that the survey work was completed and this certificate was prepared by me or under my direct personal supervision and that I am a duly registered land surveyor under the laws of the state of Iowa.

Signature: F. William King
Name typed or printed: F. WILLIAM KING
Date: 1-4-1991 Reg. No. 8033

Corners	List Corners to be Indexed	Section	Twp	Range
N 1/4	13	88N	14W	

SEAL



MISC. BK. # 293-993