

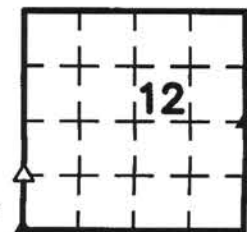


Doc ID: 005478260002 Type: GEN
Kind: CORNER
Recorded: 05/28/2014 at 10:08:32 AM
Fee Amt: \$12.00 Page 1 of 2
Black Hawk County Iowa
JUDITH A MCCARTHY RECORDER
File 2014-00020846

Lee O. Gallentine PLS, Ryken Engineering, 739 Park Avenue, Ackley, Iowa 50601 - Ph. 641-847-3273 - Fax 641-847-2303

UNITED STATES PUBLIC LAND SURVEY CORNER CERTIFICATE

Land Survey Monuments situated in Section **12** , Township **88** North,
Range **14** West, of the Fifth Principal Meridian, **Black Hawk** County, Iowa,
Previously recorded in (see below) in County Recorder's Office
E $\frac{1}{4}$ Cor. - Misc. Bk 338 Pg 98 SW Cor. - Misc. Bk 338 Pg 101
NW Cor. S $\frac{1}{2}$ SW $\frac{1}{4}$ - Not Applicable



These corners was used for a survey in this section for Tommy C. Kirchhoff and not recorded at the date of survey, which was recently brought to this surveyor's attention. Basis of bearing for this corner cert. can be found on the associated plat of survey filed in the Co. Rec's Office for this section.

Legend

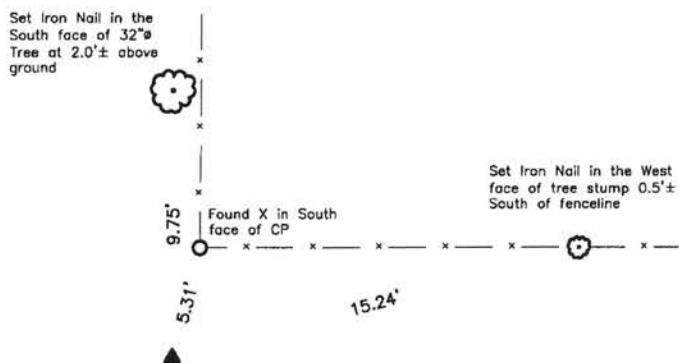
BC = Iron Nail with Bottle Cap
BP = Brace Post
CP = Corner Post
CMP = Corrugated Metal Pipe
CM = 4" Sq Concrete Monument with $\frac{1}{2}" \phi$
iron rero in center (tie to rero)
CX = Cut 'X'
GP = Gate Post
IR = $\frac{3}{8}" \phi$ x 2.0' Iron Rero

ID = Inside Diameter
OD = Outside Diameter
PP = Power Pole
PW = Iron Nail with Plastic Washer
RCP = Reinforced Concrete Pipe
RH = Red Head (Iron Nail in wire)
RW = Iron Nail with Reflective Round Washer
ROW = Right of Way

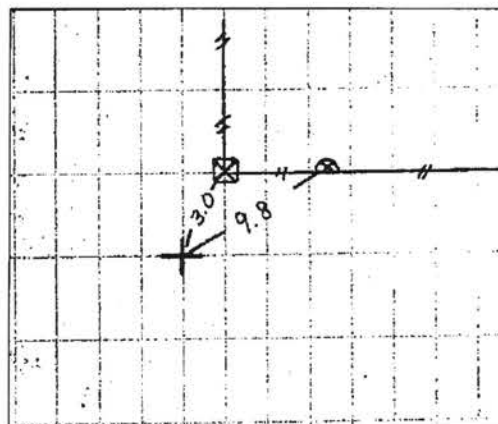
R/W = Iron ROW Rail
SFP = Steel 'T' Post
SW = Iron Nail with Square Metal Washer
TP = Telephone Pedestal
TW = Iron Nail with Round Metal Washer
WFP = Wood Fence Post
X = Iron "X" Nails



E¹/₄ Cor.



Co Engr's Ties



Partial History of Corner =

- 1866, Dec. 1 - Co Engr's Survey Record Bk 1 Pg 120 indicates usage of corner but not type of monumentation at corner by John Ball.
1868, Feb. 19 - Co Engr's Survey Record Bk 1 Pg 277 indicates usage of corner but not type of monumentation at corner by John Ball.
1868, Feb. 22 - "Mound" by John Ball per Co Engr's Survey Record Bk 1 Pg 279.
1912, May 29 - "Set Split N****head" by Nathan B. Barber Co Surveyor per Co Engr's Surveyors Record Bk 1 Pg 40.
1938, Oct. 18 - "dug hole 20' x 30' x 4' deep. found nothing established corner on straight line betwn N.E. & S.E. cor. sec. 12, and on prorated distances from those corners, according to old chaining distances, also rerun ¼ fc line from W¼ cor. sec. 12, which fell 1' No. of point set, showing corner should be very near where established" per Co Engr's W.P.A. Field Bk Pg 34.
1976, Dec. 23 - 'Found Broken Conc. Mon. 12" Deep Set Iron Pin on North Side' by Charles C. Babbitt per Iowa D.O.T. Corner Stone Survey for Project FN-520-6(4)--21-07.
1977, Apr. 12 - "F Iron Pin over Conc. Mon." per Unrecorded Robinson Engineering Company Survey by Gary G. Brown (#R-2793-001-LS-1824-T).
1993, Mar. 31 - "FOUND BROKEN OFF CONCRETE MONUMENT" by Paul H. Helland per Co Rec's Bk 305 Pg 760.
2000, Apr. 20 - 'Found Concrete Monument with Brass Cap 6" deep.' by Michael R. Fagle per Co Rec's Misc Bk 338 Pg 98.
2005, Oct. 13 - "FND STANDARD CONCRETE MONUMENT W/ BRASS CAP" by Wendell J. Lupkes Co Rec's Fee Bk #2006 11882, #2006 11882 and #2006 18568.

Co Engr's ties do not indicate type of monumentation at corner but ties are shown above.

Corner Recovery =

Searched 10' area around record tie distance with metal detector and found nothing. Excavated 1.5' x 1.5' x 1.5' deep hole at record tie distance and found brass capped concrete monument, 1.0' deep. Concrete monument is 4.0'± South of fenceline East and 1.0'± West of fenceline North. Location of monument found matches that of record, monument found matches that of record and record tie is within reason. Therefore, used concrete monument as the correct corner. Placed a pink plastic cased magnet on North side of concrete monument for locating purposes only. All ties are plumb distance unless indicated otherwise.

This certificate is being prepared because there are no longer three valid ties of record.



I hereby certify that this land surveying document was prepared and the related survey work was performed by me or under my direct personal supervision and that I am a duly licensed Professional Land Surveyor under the laws of the State of Iowa.

LEE O. GALLENTINE, PLS
Date: May 23, 2014 License number: 15745
My license renewal date is December 31, 2014
Pages or sheets covered by this seal: 1 & 2

Corners to be Indexed

Corners	Section	Twp	Range
E $\frac{1}{4}$ Cor.	12	T88N	R14W
NW Cor. S $\frac{1}{2}$ SW $\frac{1}{4}$	12	T88N	R14W
SW Cor.	12	T88N	R14W

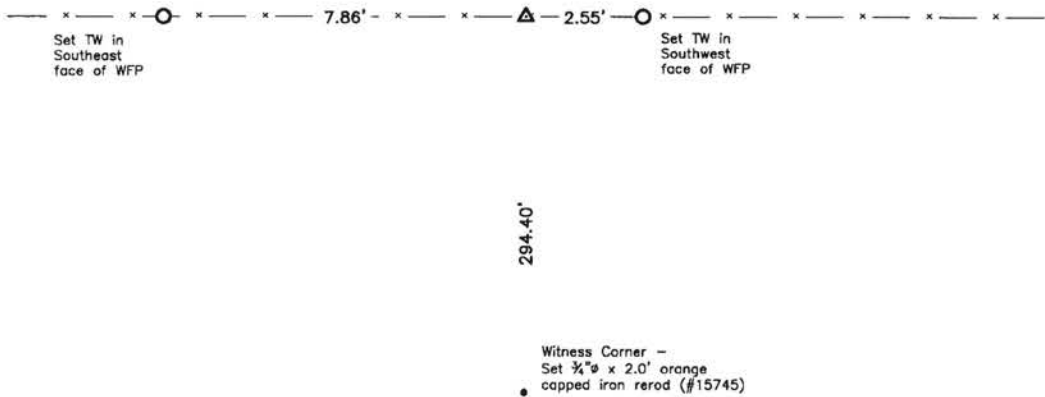
Pg 1 of 2

P:\BOB\ELKAM\1100\WILSON\KRCR\011101\011101.DOC 11/28/01 10:30:30 AM 1

(12.00)

2

NW Cor. S½ SW¼



Partial History of Corner =

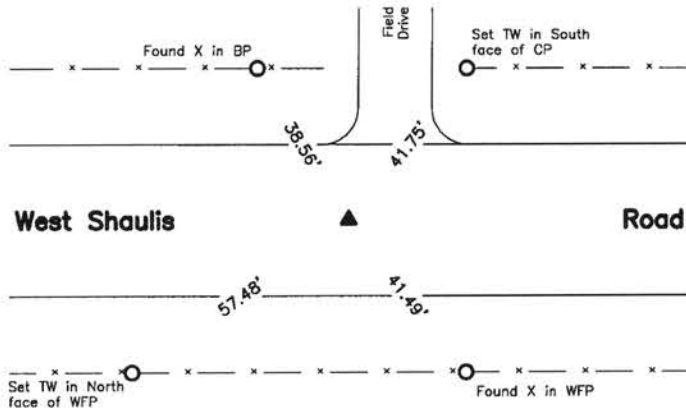
- 1977, Apr. 12 - Unrecorded Robinson Engineering Company Survey indicates usage of corner but not type of monumentation at corner by Gary G. Brown (#R-2793-001-LS-1824-T).
2005, Oct. 13 - Co Rec's Fee Bk #2006 11881 and #2006 11882 indicate usage of corner but not type of monumentation at corner by Wendell J. Lupkes.
Co Engr's ties do not indicate that corner is monumented.

Corner Recovery =

Searched 10'Ø area around the equidistance point between the E¼ Corner and the SE Corner with metal detector, searched 5.0' x 5.0' area with tile probe to 4.0'± deep and found nothing. Said equidistance point is in-line with East-West fenceline. Having found no monumentation, set ¾"Ø x 4.0' aluminum capped iron rod (#15745), 0.3' exposed at said equidistance point in accordance with accepted PLSS methods and previous surveys and used rod as the correct corner. All ties are plumb distance unless indicated otherwise.

This certificate is being prepared because there are no certificates on file for this corner.

SW Cor.



Partial History of Corner =

- 1866, Jun. 22 - "Mound" by John Ball per Co Engr's Survey Record Bk 1 Pg 36.
1891, Jan. - "Stone" by John Ball per Co Engr's Survey Record Bk 1 Pg 279.
No Date - "F" per Co Engr's Surveyors Record Bk 1 Pg 86.
No Date - "F. Lime Stone" per Co Engr's Surveyors Record Bk 1 Pg 87.
1938, Oct. 4 - 'found lime stone 6"x7"x27" also wood stake 1"x2½"x17½" lowered evidence and set C.M. on top 12" underground' per Co Engr's W.P.A. Field Bk Pgs 37 and 39.
1977, Apr. 12 - "F Conc. Mon." per Unrecorded Robinson Engineering Company Survey by Gary G. Brown (#R-2793-001-LS-1824-T).
1991, Jan. 4 - 'Found Std. Conc. Mon. 5" Deep in gravel road per county ties. Set ½" rebar for magnetic location @ 0.30' North & 0.5' below top of monument' by F. William King per Co Rec's Misc. Bk 293 Pg 995.
1992, Jan. 7 - "FOUND BROKEN SCM" by F. William King per Co Rec's Bk 299 Pg 428.
1992, Jan. 7 - "Top of Monument has been broken off since certificate of 293-995. Set P.K. nail in center of broken monument" by F. William King per Co Rec's Misc. Bk 299 Pg 418.
1999, Oct. 28 - "Found Concrete Monument w/brass cap" by Paul Helland per Co Rec's Misc Bk 336 Pg 190.
2000, Jan. 4 - "Found Concrete Monument" by Paul H. Helland per Co Rec's Misc Bk 336 Pg 792.
2000, Apr. 20 - "Found Concrete Monument with Brass Cap 6" deep...Record ties indicate a concrete monument with broken top was found. We found a concrete monument with brass cap intact and retied.' by Michael R. Fagle per Co Rec's Misc. Bk 338 Pg 101.
2005, Oct. 13 - "FND STANDARD CONCRETE MONUMENT W/ BRASS CAP" by Wendell J. Lupkes Co Rec's Fee Bks #2006 11881, #2006 11882 and #2006 18568.

Co Engr's ties indicate that corner is monumented with: "OK" on May 2, 1958.
"Tied" in Jan. 1991 with ties matching Co Rec's Misc. Bk 293 Pg 995.

Corner Recovery =

Searched 10'Ø area around the intersection point of record distance (1977 Survey) and the apparent centerline of road with metal detector, excavated 0.5' x 0.5' x 0.7' deep hole and found a broken concrete monument (top 0.3' broken off), 0.6' deep. Concrete monument is in apparent centerline of traveled surface of gravel road East-West. Location of monument found matches that of record, monument found matches that of record, and record ties are within reason. Therefore, set 'MAG' nail in center of broken monument to perpetuate monumentation and used nail as the correct corner. All ties are plumb distance unless indicated otherwise.

This certificate is being prepared because there are no longer three valid ties of record.

Legend

BC = Iron Nail with Bottle Cap	ID = Inside Diameter	R/W = Iron ROW Rail
BP = Brace Post	OD = Outside Diameter	SFP = Steel 'T' Post
CP = Corner Post	PP = Power Pole	SW = Iron Nail with Square Metal Washer
CMP = Corrugated Metal Pipe	PW = Iron Nail with Plastic Washer	TP = Telephone Pedestal
CM = 4" Sq Concrete Monument with ½"Ø iron rod in center (tie to rod)	RCP = Reinforced Concrete Pipe	TW = Iron Nail with Round Metal Washer
CX = Cut 'X'	RH = Red Head (Iron Nail in wire)	WFP = Wood Fence Post
GP = Gate Post	RW = Iron Nail with Reflective Round Washer	X = Iron "X" Nails
IR = ¾"Ø x 2.0' Iron Rod	ROW = Right of Way	