

SC
MISC
INDEX
MARGIN
PROOF
COMPARE

FILED FOR RECORD APR 20, 2000 AT
4:00 P. M. AND RECORDED IN BOOK 338
OF MISC PAGE 101

Christina A. Less

RECORDER

FEE 1-5.00X

EARTH TECH

501 SYCAMORE ST WATERLOO, IA 50703

Michael R. Fagle, L.S.

Earth Tech, 501 Sycamore St., Suite 222, Waterloo, Iowa 50703

1-319-232-6531

UNITED STATES PUBLIC LAND SURVEY CORNER CERTIFICATE OF

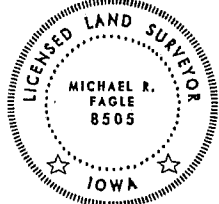
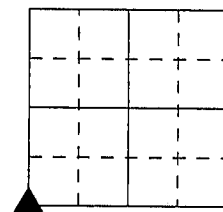
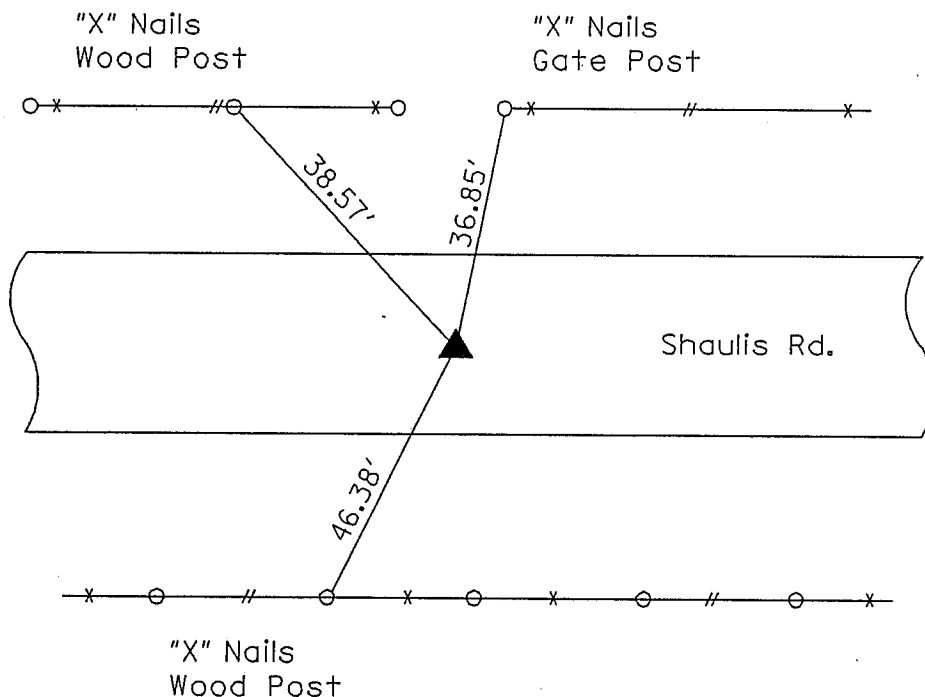
Land Survey Monuments situated in Section 12, Township 88 North,
Range 14 West, of the Fifth Principal Meridian, Black Hawk
County, Iowa. Previously recorded in MISC. 293-995 and 299-418
in County Recorder's Office. (Book, Page, Document Number, etc.)

(Show reason for preparing this certificate, the evidence and detailed procedures used in establishing the corner positions and monumentation found or placed.)

Monument Description and Remarks: Found Concrete Monument with Brass Cap
6" deep. All measurements are horizontal ties. Found monument from record ties
located in the Black Hawk County Engineer's Office. Record ties indicate a
concrete monument with broken top was found. We found a concrete monument
with brass cap intact and retied.

PLAN - VIEW

(Show a minimum of three reference ties to durable physical objects, relevant monuments and physical conditions that will enable recovery of the corner.)



I hereby certify that this Land Surveying document was prepared by me or under my direct personal supervision and that I am a duly Licensed Land Surveyor under the laws of the State of Iowa.

Michael R. Fagle 4-22-00
MICHAEL R. FAGLE Date

License number 8505

My license renewal date is December 31, 2000

Pages or sheets covered by this seal:

ONE

List Corners to be Indexed

Corners	Section	Twp	Range
Southwest Corner	12	T 88 N	R 14 W

BOOK 338 PAGE 101