

Jeffrey P. Helland, 1107 Technology Parkway, Cedar Falls, Iowa 50613-6951, (319)-266-0161

UNITED STATES PUBLIC LAND SURVEY CORNER CERTIFICATE
OF

LAND SURVEY MONUMENTS SITUATED IN SECTION NO. 12, TOWNSHIP NO. 88 NORTH, RANGE
NO. 14 WEST OF THE FIFTH PRINCIPAL MERIDIAN, BLACK HAWK COUNTY, IOWA.
PREVIOUSLY RECORDED IN FILE 2013-00020648

(SHOW REASON FOR PREPARING THIS CERTIFICATE, THE EVIDENCE AND DETAILED PROCEDURES USED IN ESTABLISHING THE
CORNER POSITIONS AND MONUMENTATION FOUND OR PLACED.)

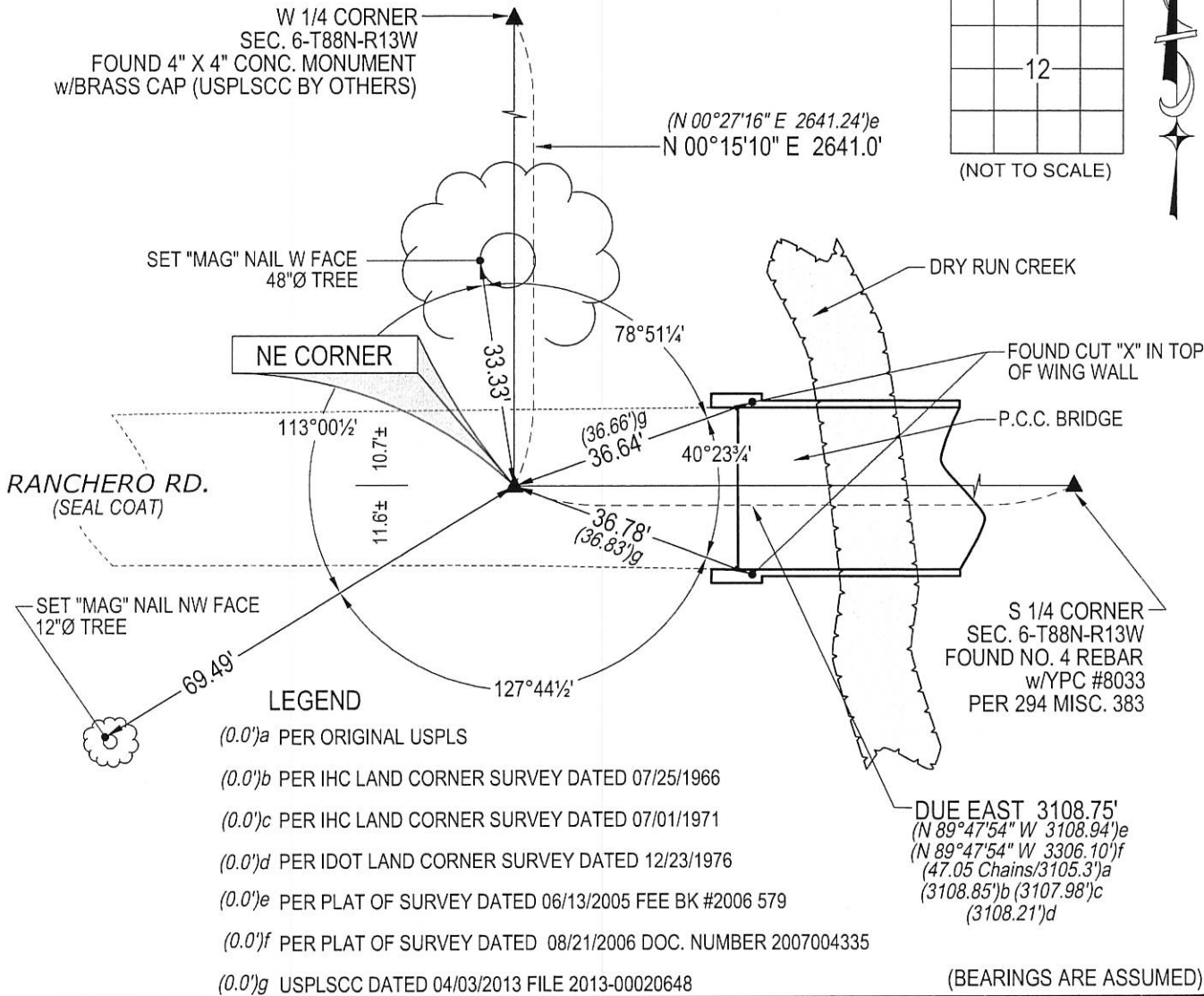
MONUMENT DESCRIPTION AND REMARKS:

ONLY TWO REFERENCE TIES REMAIN. SURVEY COMPLETED IN THE SW 1/4 OF SEC. 6-T88N-R13W.

NE CORNER: USPLSCC FILE 2013-00020648 DATED 03/03/2013 CALLS FOR [WPA FIELD NOTES FROM BLACK HAWK
COUNTY ENGINEER'S OFFICE, DATED OCT. 3, 1938, STATE "FOUND IRON REBAR 5/8" X 34" AND ROUND POST 5" X 18"
AND 1 1/2" X 5 1/2" X 7 1/2" PIECES OF OLD CROCKERY LOWERED EVIDENCE AND SET C.M. ON TOP 12" UNDERGROUND.
FOUND 5/8" REBAR AND LEANING CONCRETE MONUMENT ABOUT 9" BELOW ASPHALT ROAD. SET MAG NAIL AND
WASHER #16775 ABOVE SAID EVIDENCE ON SURFACE OF SEALCOAT ROAD (RANCHERO ROAD).] FOUND CONCRETE
MONUMENT LEANING EASTERLY WITH 5/8" REBAR WEST OF MONUMENT 12" DEEP, THEREFORE SET NO. 4 REBAR WITH
#23212 IN BETWEEN SAID 5/8" PIN AND SAID MONUMENT. PREVIOUS CORNER CERT IS GENERAL IN SETTING "ABOVE
EVIDENCE" AND DOES NOT CALL OUT A SPECIFIC MONUMENT.

PLAN VIEW

(SHOW A MINIMUM OF THREE REFERENCE TIES TO DURABLE PHYSICAL OBJECTS, RELEVANT MONUMENTS AND PHYSICAL
CONDITIONS THAT WILL ENABLE RECOVERY OF THE CORNER.)



HELLAND ENGINEERING & SURVEYING, LTD.
1107 Technology Parkway
Cedar Falls, Iowa 50613-6951
(319)-266-0161

SHINER = 8d. NAIL & 1 5/16"Ø METAL SHINER DRAWN BY: CDR
BRASS TAG = 8d. NAIL & 13/16"Ø BRASS TAG
OPC = PLASTIC CAP (O=ORANGE, R=RED, Y=YELLOW)
(00') RECORDED AS FILE NAME: 16-117-25.DWG



I hereby certify that this land surveying document was prepared
and the related survey work was performed by me or under my
direct personal supervision and that I am a duly licensed
Professional Land Surveyor under the laws of the State of Iowa.
Kyle J. Helland
License Number 23212
My license renewal date is December 31, 2017.
All pages or sheets are covered by this seal except:

LIST CORNERS TO BE INDEXED			
CORNER	SECTION	TOWNSHIP	RANGE
NE CORNER	12	88N	14W
SE CORNER	1	88N	14W
SW CORNER	6	88N	13W
NW CORNER	7	88N	13W