



Doc ID: 004382700001 Type: GEN
Kind: CORNER
Recorded: 01/28/2011 at 02:03:05 PM
Fee Amt: \$9.00 Page 1 of 1
Black Hawk County Iowa
JUDITH A MCCARTHY RECORDER

File 2011-00015346

Jeffrey P. Helland, 1107 Technology Parkway, Cedar Falls, Iowa 50613-6951, (319)-266-0161

UNITED STATES PUBLIC LAND SURVEY CORNER CERTIFICATE OF

LAND SURVEY MONUMENTS SITUATED IN SECTION NO. 12, TOWNSHIP NO. 88 NORTH, RANGE
NO. 14 WEST OF THE FIFTH PRINCIPAL MERIDIAN, BLACK HAWK COUNTY, IOWA.
PREVIOUSLY RECORDED IN FEE BK #2006 18398

(SHOW REASON FOR PREPARING THIS CERTIFICATE, THE EVIDENCE AND DETAILED PROCEDURES USED IN ESTABLISHING THE
CORNER POSITIONS AND MONUMENTATION FOUND OR PLACED.)

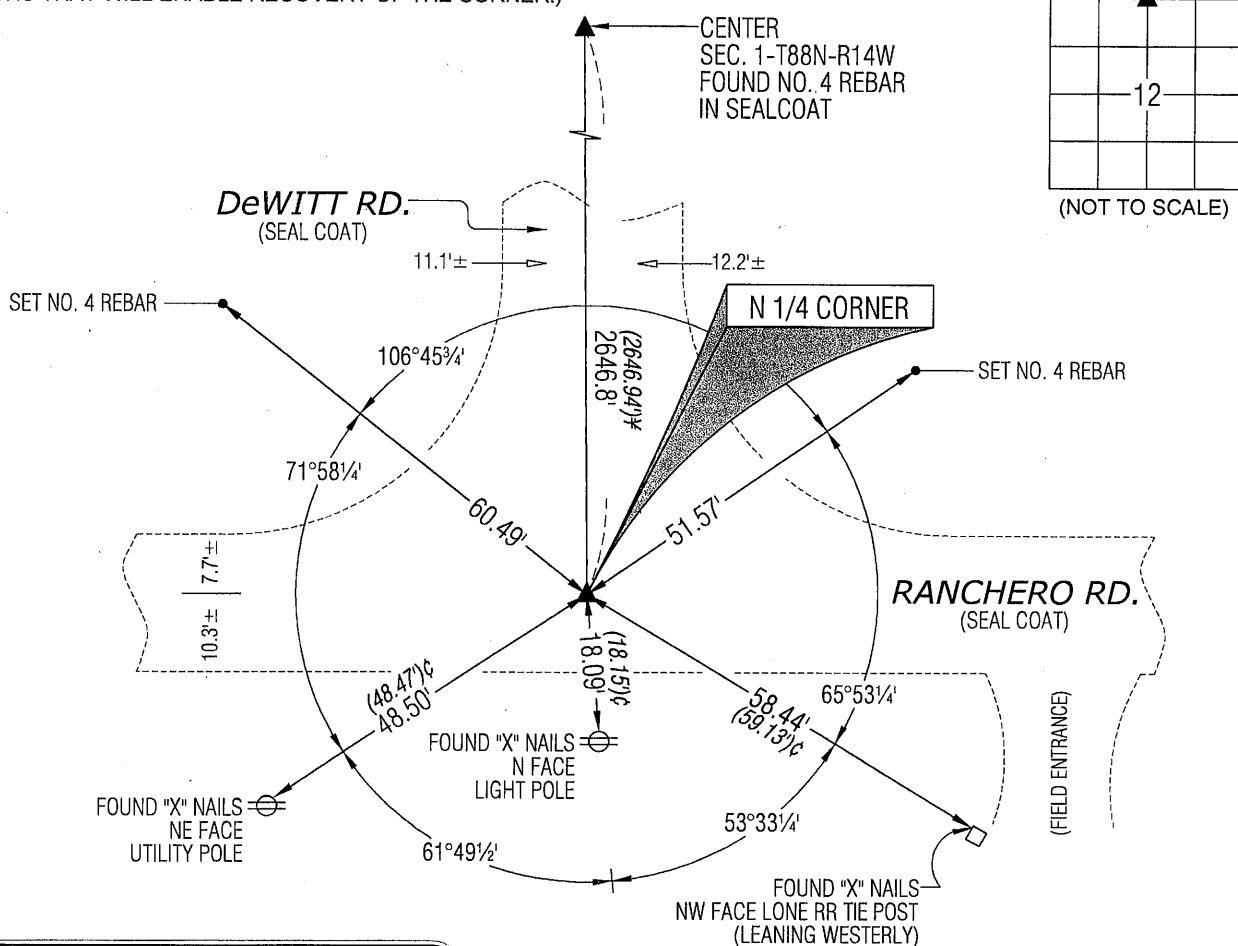
MONUMENT DESCRIPTION AND REMARKS:

USPLSCC FEE BK #2006 18398 REFERENCE TIES HAVE CHANGED. SURVEY COMPLETED IN THE SW 1/4 OF SEC.
1-T88N-R14W.

→ N 1/4 CORNER: I.D.O.T. CORNER STONE SURVEY REFERENCE TIES RF-520-6 (17)--35-07 BY CHARLES C. BABBITT DATED
12/5/1977 CALLS FOR [FOUND IRON PIN]. USPLSCC FEE BK #2006 18398 DATED 1/26/2006 CALLS FOR [FOUND 1"
PINCHED PIPE, 10" DEEP]. FOUND 1" o.d. IRON PINCHED PIPE (0.8'± DEEP) PER REMAINING REFERENCE TIES. SET NO. 4
REBAR w/ALUMINUM CAP #16264 (0.5' LONG) ABOVE SAID PINCHED PIPE. UTILIZED SAID REBAR AS CORNER.

PLAN VIEW

(SHOW A MINIMUM OF THREE REFERENCE TIES TO DURABLE PHYSICAL OBJECTS, RELEVANT MONUMENTS AND PHYSICAL
CONDITIONS THAT WILL ENABLE RECOVERY OF THE CORNER.)



LEGEND

(0.0')c PER USPLSCC FEE BK #2006 18398

(0.0')# PER IDOT LAND CORNER SURVEY BY
CHARLES C. BABBITT DATED 12/5/1977



HELLAND ENGINEERING & SURVEYING, LTD.
1107 Technology Parkway
Cedar Falls, Iowa 50613-6951
(319)-266-0161

SHINER = 8D NAIL & 1 5/16"Ø METAL SHINER
BRASS TAG = 8D NAIL & 13/16"Ø BRASS TAG
OPC = PLASTIC CAP (O=ORANGE, R=RED, Y=YELLOW)
(00') RECORDED AS FILE NAME: 11-107C1.DWG



I hereby certify that this land surveying document was prepared
and the related survey work was performed by me or under my
direct personal supervision and that I am a duly licensed Land
Surveyor under the laws of the State of Iowa.

Jeffrey P. Helland
License Number 16264
My license renewal date is December 31, 2011.
All pages or sheets are covered by this seal except:

LIST CORNERS TO BE INDEXED

CORNER	SECTION	TOWNSHIP	RANGE
N 1/4 CORNER	12	88N	14W
S 1/4 CORNER	1	88N	14W