

SC
MISC
INDEX
MARGIN
PROOF
COMPARE

BLACK HAWK COUNTY IOWA:SS
FILED FOR RECORD APR 20, 2000 AT
4:00 P. M. AND RECORDED IN BOOK 338
OF MISC PAGE 98.

021788

Michael R. Fagle

RECORDER

FEE 1-5.00X

EARTH TECH
501 SYCAMORE ST WATERLOO, IA 50703

Michael R. Fagle, L.S.

Earth Tech, 501 Sycamore St., Suite 222, Waterloo, Iowa 50703

1-319-232-6531

UNITED STATES PUBLIC LAND SURVEY CORNER CERTIFICATE OF

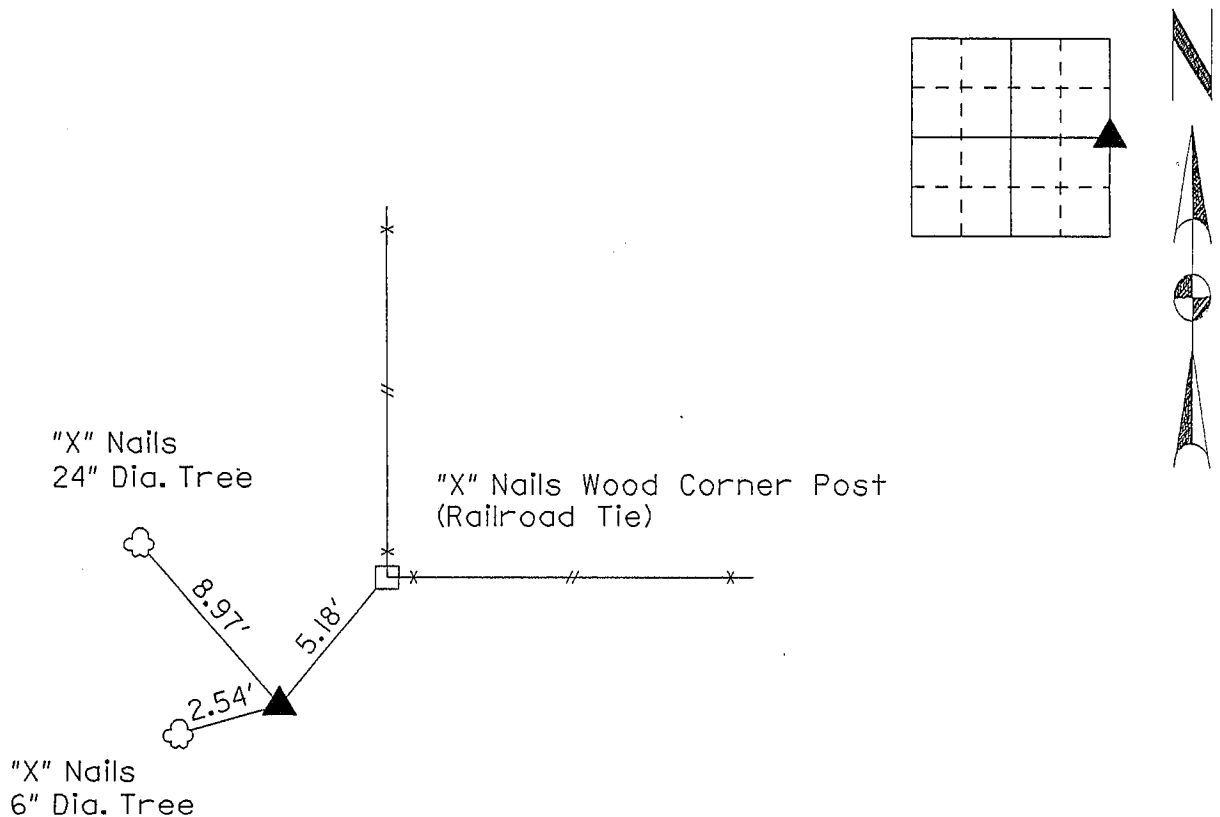
Land Survey Monuments situated in Section 12, Township 88 North,
Range 14 West, of the Fifth Principal Meridian, Black Hawk
County, Iowa. Previously recorded in _____
(Book, Page, Document Number, etc.)
in County Recorder's Office.

(Show reason for preparing this certificate, the evidence and detailed procedures
used in establishing the corner positions and monumentation found or placed.)

Monument Description and Remarks: Found Concrete Monument with Brass Cap
6" deep. All measurements are horizontal ties. Monument was located from old
ties in field book in Black Hawk County Engineer's Office.

PLAN - VIEW

(Show a minimum of three reference ties to durable physical objects, relevant
monuments and physical conditions that will enable recovery of the corner.)



I hereby certify that this Land Surveying
document was prepared by me or under
my direct personal supervision and
that I am a duly Licensed Land Surveyor
under the laws of the State of Iowa.

Michael R. Fagle 4-20-00
MICHAEL R. FAGLE Date

License number 8505

My license renewal date is December 31, 2000

Pages or sheets covered by this seal:

ONE

List Corners to be Indexed

Corners	Section	Twp	Range
East Quarter Corner	12	T 88 N	R 14 W