

WAYNE CLAASSEN ENGINEERING AND SURVEYING, INC.
P.O. BOX 898 WATERLOO, IOWA 50704-0898

PHONE: (VOICE) 319-235-6294
(FAX) 319-235-0028

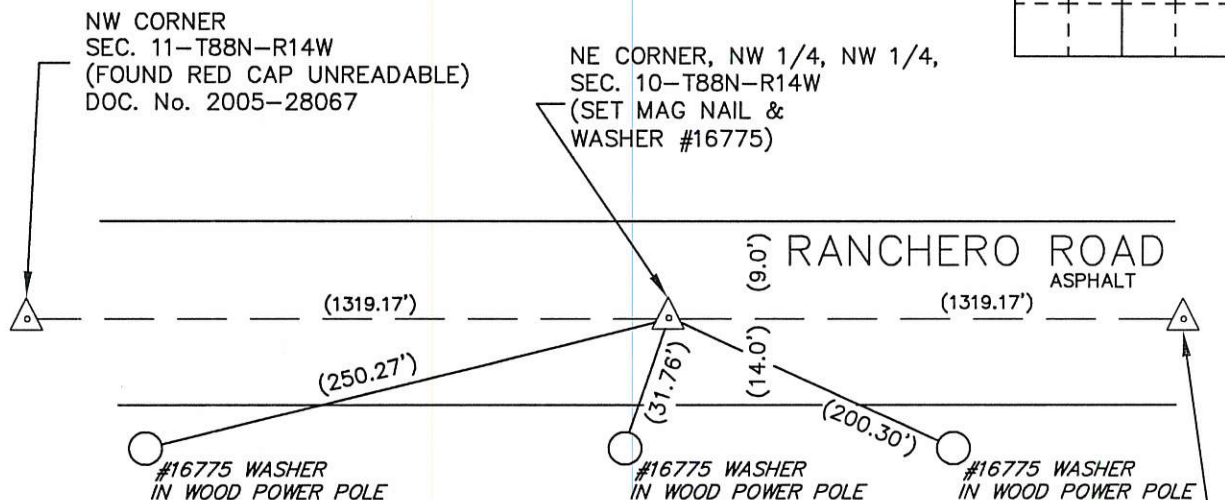
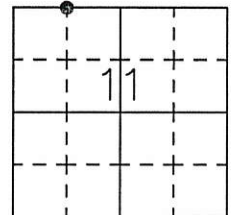
Land Survey Monuments situated in Section 11, Township 88 North, Range 14 West, of the Fifth Principal Meridian, Black Hawk County, Iowa. Previously recorded in _____ in County Recorder's Office.
(book, page, document number, etc.)

Monument Description and Remarks

Went to location of 1/4-1/4 corner and look for monumentation and found none. Set mag nail and washer #16775 at midpoint between North 1/4 corner and Northwest corner of this section.

Reason for filing certificate:

- ☒ There is no certificate on file with the Recorder's Office.
☐ Accepts corner position which differs from the one shown in above document.
☐ The corner monument was replaced or modified.
☐ The reference ties in above document were missing.



IOWA STATE PLANE
COORDINATE SYSTEM
NORTH ZONE
N 3631519.2
E 5204190.3
(FOR LOCATION PURPOSES ONLY)

N 1/4 CORNER
SEC. 11-T88N-R14W
(FOUND 1/2" REBAR)
DOC. No. 2005-28067

749-05

I hereby certify that this land surveying document was prepared and the related survey work was performed by me or under my direct personal supervision and that I am a duly Licensed Land Surveyor under the laws of the State of Iowa.

Signature:

David L. Scheil, L.S.

Date: Jan 05, 2017 Lic. No. 16775

Pages or Sheets Covered by this Seal: THIS SHEET ONLY.

My license renewal date is December 31, 2018

SEAL

List Corners to be Indexed

Corners	Section	Twp	Range
NE CORNER, NW 1/4, NW 1/4,	11	88 N	14 W



(7)