

WAYNE CLAASSEN ENGINEERING AND SURVEYING, INC.
P.O. BOX 898 WATERLOO, IOWA 50704-0898

PHONE: (VOICE) 319-235-6294
(FAX) 319-235-0028

UNITED STATES PUBLIC LAND SURVEY CORNER CERTIFICATE

Land Survey Monuments situated in Section 11, Township 88 North, Range 14 West, of the Fifth Principal Meridian, Black Hawk County, Iowa.

Previously recorded in _____ in County Recorder's Office.
(book, page, document number, etc.)

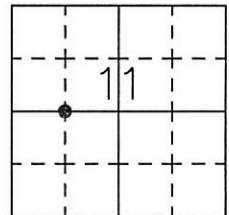
Monument Description and Remarks

Went to location of 1/4-1/4 corner and look for monumentation and found none. Set 1/2" X 24" Steel rebar and red cap #16775 at midpoint between West 1/4 corner and Center corner of this section.

PLAN - VIEW

Reason for filing certificate:

- ☒ There is no certificate on file with the Recorder's Office.
- ☐ Accepts corner position which differs from the one shown in above document.
- ☐ The corner monument was replaced or modified.
- ☐ The reference ties in above document were missing.

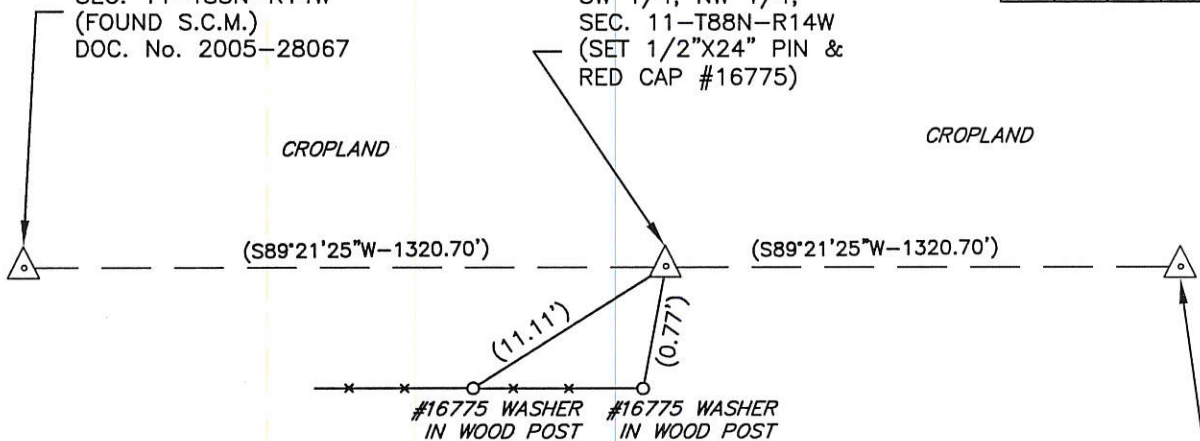


W 1/4 CORNER
SEC. 11-T88N-R14W
(FOUND S.C.M.)
DOC. No. 2005-28067

SE CORNER,
SW 1/4, NW 1/4,
SEC. 11-T88N-R14W
(SET 1/2"X24" PIN &
RED CAP #16775)

CROPLAND

CROPLAND



IOWA STATE PLANE
COORDINATE SYSTEM
NORTH ZONE
N 3628869.1
E 5204238.2

CENTER,
SEC. 11-T88N-R14W
(FOUND PIN & ORANGE
CAP #6505)
DOC. No. 2015-02655

(FOR LOCATION PURPOSES ONLY)

749-03

I hereby certify that this land surveying document was prepared and the related survey work was performed by me or under my direct personal supervision and that I am a duly Licensed Land Surveyor under the laws of the State of Iowa.

Signature: David L. Scheil
David L. Scheil, L.S.

Date: JAN 05, 2017 Lic. No. 16775

Pages or Sheets Covered by this Seal: THIS SHEET ONLY.

My license renewal date is December 31, 2018

SEAL

List Corners to be Indexed

Corners	Section	Twp	Range
SE CORNER, SW 1/4, NW 1/4,	11	88 N	14 W

