

Doc ID: 006929390001 Type: GEN  
Recorded: 12/17/2015 at 10:03:17 AM  
Fee Amt: \$7.00 Page 1 of 1  
Black Hawk County Iowa  
SANDIE L. SMITH RECORDER  
File 2016-00011007

Paul H. Helland, 1107 Technology Parkway, Cedar Falls, Iowa 50613-6951, (319)-266-0161

UNITED STATES PUBLIC LAND SURVEY CORNER CERTIFICATE  
OF

LAND SURVEY MONUMENTS SITUATED IN SECTION NO. 11, TOWNSHIP NO. 88 NORTH, RANGE  
NO. 14 WEST OF THE FIFTH PRINCIPAL MERIDIAN, BLACK HAWK COUNTY, IOWA.  
PREVIOUSLY RECORDED IN N/A

(SHOW REASON FOR PREPARING THIS CERTIFICATE, THE EVIDENCE AND DETAILED PROCEDURES USED IN ESTABLISHING THE  
CORNER POSITIONS AND MONUMENTATION FOUND OR PLACED.)

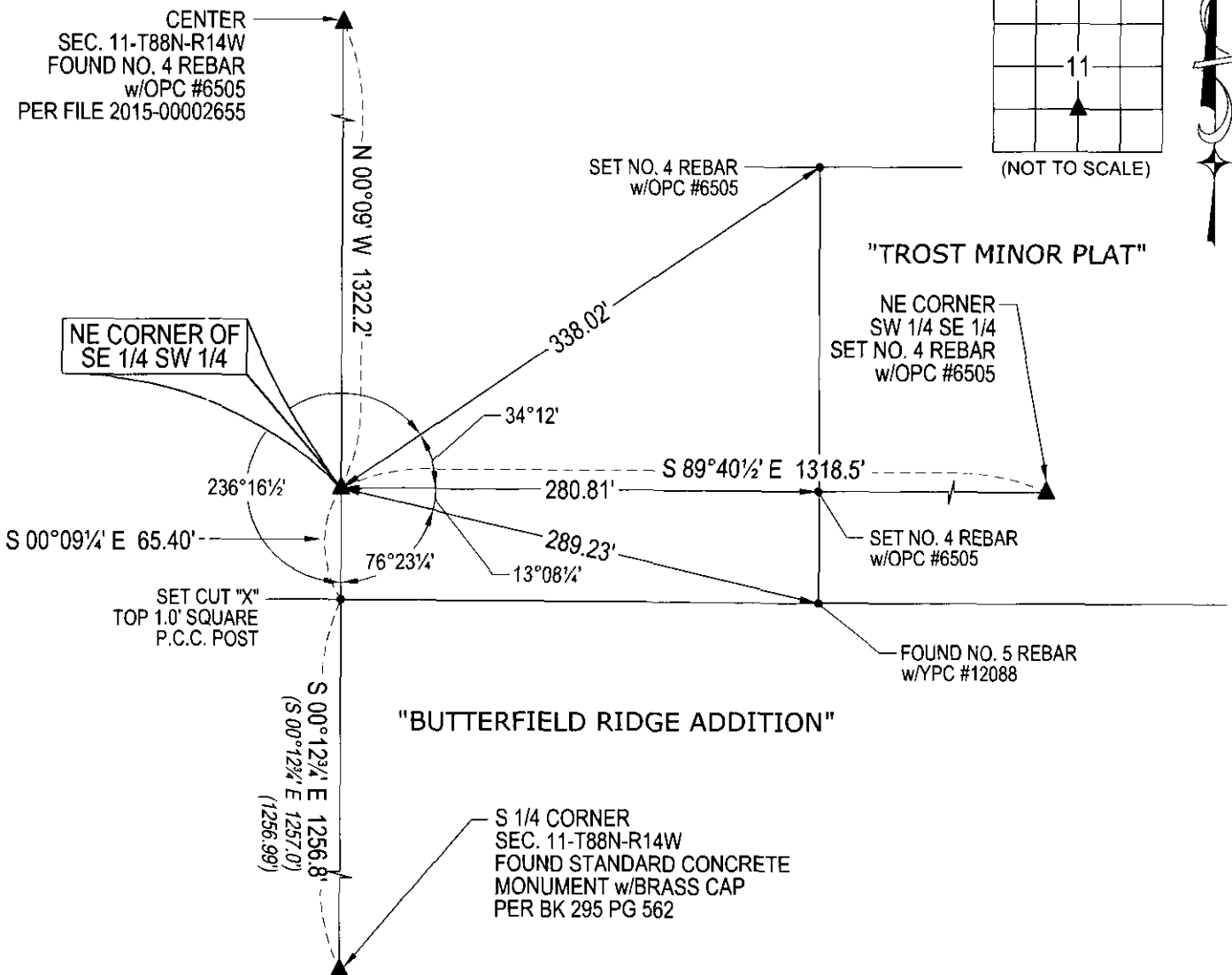
MONUMENT DESCRIPTION AND REMARKS:

NO USPLSCC ON FILE. SURVEY COMPLETED IN THE NW 1/4 SE 1/4 OF SEC. 11-T88N-R14W.

NE CORNER SE 1/4 SW 1/4: NO BLACK HAWK COUNTY ENGINEER REFERENCE TIES AVAILABLE. SEARCHED  
AREA, NOTHING FOUND, THEREFORE SET NO. 4 REBAR WITH LICENSE #6505 ON A STRAIGHT LINE BETWEEN  
THE NORTHWEST CORNER OF "BUTTERFIELD RIDGE ADDITION" AND THE CENTER OF SECTION & EQUAL  
DISTANCE BETWEEN THE CENTER OF SAID SECTION AND THE SOUTH 1/4 CORNER OF SAID SECTION.

PLAN VIEW

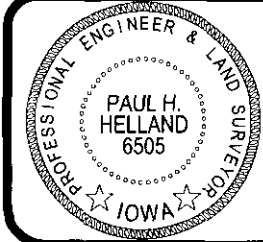
(SHOW A MINIMUM OF THREE REFERENCE TIES TO DURABLE PHYSICAL OBJECTS, RELEVANT MONUMENTS AND PHYSICAL  
CONDITIONS THAT WILL ENABLE RECOVERY OF THE CORNER.)



(BEARINGS ARE ASSUMED)

**HES** HELLAND ENGINEERING & SURVEYING, LTD.  
1107 Technology Parkway  
Cedar Falls, Iowa 50613-6951  
(319)-266-0161

SHINER = 8d. NAIL & 1 5/16"Ø METAL SHINER DRAWN BY: CDR  
BRASS TAG = 8d. NAIL & 13/16"Ø BRASS TAG  
OPC = PLASTIC CAP (O=ORANGE, R=RED, Y=YELLOW)  
(00) RECORDED AS FILE NAME: 15-141-44.DWG



I hereby certify that this land surveying document was prepared  
and the related survey work was performed by me or under my  
direct personal supervision and that I am a duly licensed  
Professional Land Surveyor under the laws of the State of Iowa.  
Paul H. Helland 11/30/15  
License Number 6505  
My license renewal date is December 31, 2015.  
All pages or sheets are covered by this seal except:

LIST CORNERS TO BE INDEXED			
CORNER	SECTION	TOWNSHIP	RANGE
NE COR. SE 1/4 SW 1/4	11	88N	14W
SE COR. NE 1/4 SW 1/4	11	88N	14W
SW COR. NW 1/4 SE 1/4	11	88N	14W
NW COR. SW 1/4 SE 1/4	11	88N	14W

File Number: 2016-00011007 Seq: 1