



Doc ID: 009927890001 Type: GEN
Recorded: 08/26/2020 at 11:51:55 AM
Fee Amt: \$7.00 Page 1 of 1
Black Hawk County Iowa
SANDIE L. SMITH RECORDER

File 2021-00004164

Env *

WAYNE CLAASSEN ENGINEERING AND SURVEYING, INC.
P.O. BOX 898 WATERLOO, IOWA 50704-0898

PHONE: (VOICE) 319-235-6294
(FAX) 319-235-0028

UNITED STATES PUBLIC LAND SURVEY CORNER CERTIFICATE

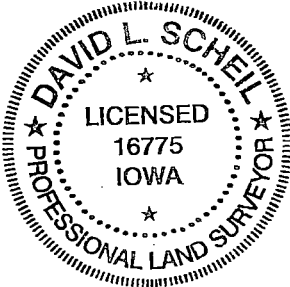
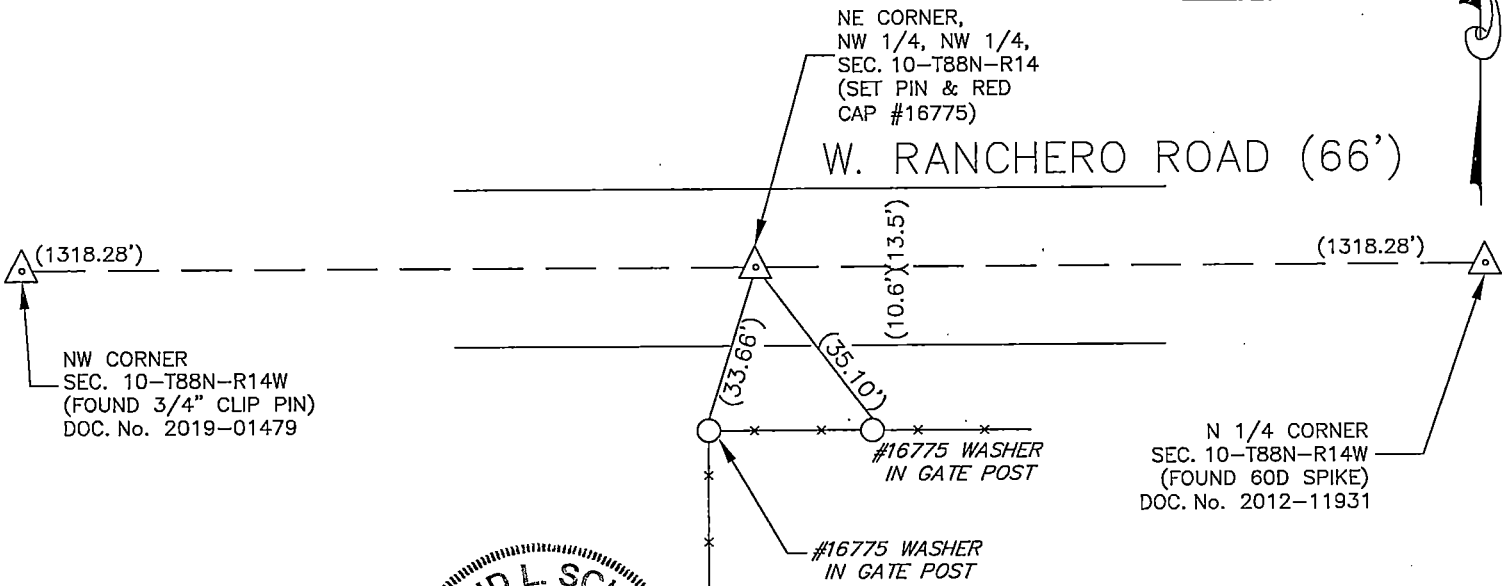
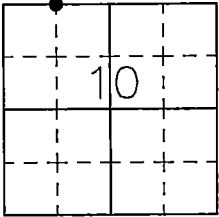
Land Survey Monuments situated in Section 10, Township 88 North, Range 14 West, of the Fifth Principal Meridian, Black Hawk County, Iowa.

Previously recorded in _____ in County Recorder's Office.
(book, page, document number, etc.)

Monument Description and Remarks

Fred Debe Plat of Survey, Misc. 289-448, dated 2-7-90, shows a found iron pin. Went to location of corner and did not find pin. Set 1/2"x24" iron pin and red cap #16775 at mid point between NW Corner and N 1/4 Corner.

- Reason for filing certificate:
- ☒ There is no certificate on file with the Recorder's Office.
 - ☐ Accepts corner position which differs from the one shown in above document.
 - ☐ The corner monument was replaced or modified.
 - ☐ The reference ties in above document were incorrect or missing.



Iowa State Plane Coordinate System
(North Zone, 2011 Adj.)
N= 3631432.9
E= 5198910.6
(for location purposes only)

688-078

I hereby certify that this land surveying document was prepared and the related survey work was performed by me or under my direct personal supervision and that I am a duly Licensed Land Surveyor under the laws of the State of Iowa.

Signature: David L. Scheil
David L. Scheil, L.S.

Date: August 21, 2020 Lic. No. 16775

Pages or Sheets Covered by this Seal: THIS SHEET ONLY.

My license renewal date is December 31, 2020

SEAL

| List Corners to be Indexed | | | |
|-------------------------------|---------|------|-------|
| Corners | Section | Twp | Range |
| NE CORNER, NW 1/4, NW 1/4, | 10 | 88 N | 14 W |
| SE CORNER, SW 1/4, SW 1/4, | 03 | 88 N | 14 W |