



Doc ID: 010420950001 Type: GEN
Recorded: 04/04/2022 at 11:50:35 AM
Fee Amt: \$7.00 Page 1 of 1
Black Hawk County Iowa
SANDIE L. SMITH RECORDER

File 2022-00019312

WAYNE CLAASSEN ENGINEERING AND SURVEYING, INC.
P.O. BOX 898 WATERLOO, IOWA 50704-0898

PHONE: (VOICE) 319-235-6294
(FAX) 319-235-0028

UNITED STATES PUBLIC LAND SURVEY CORNER CERTIFICATE

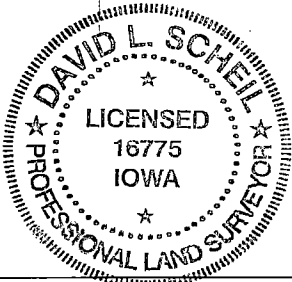
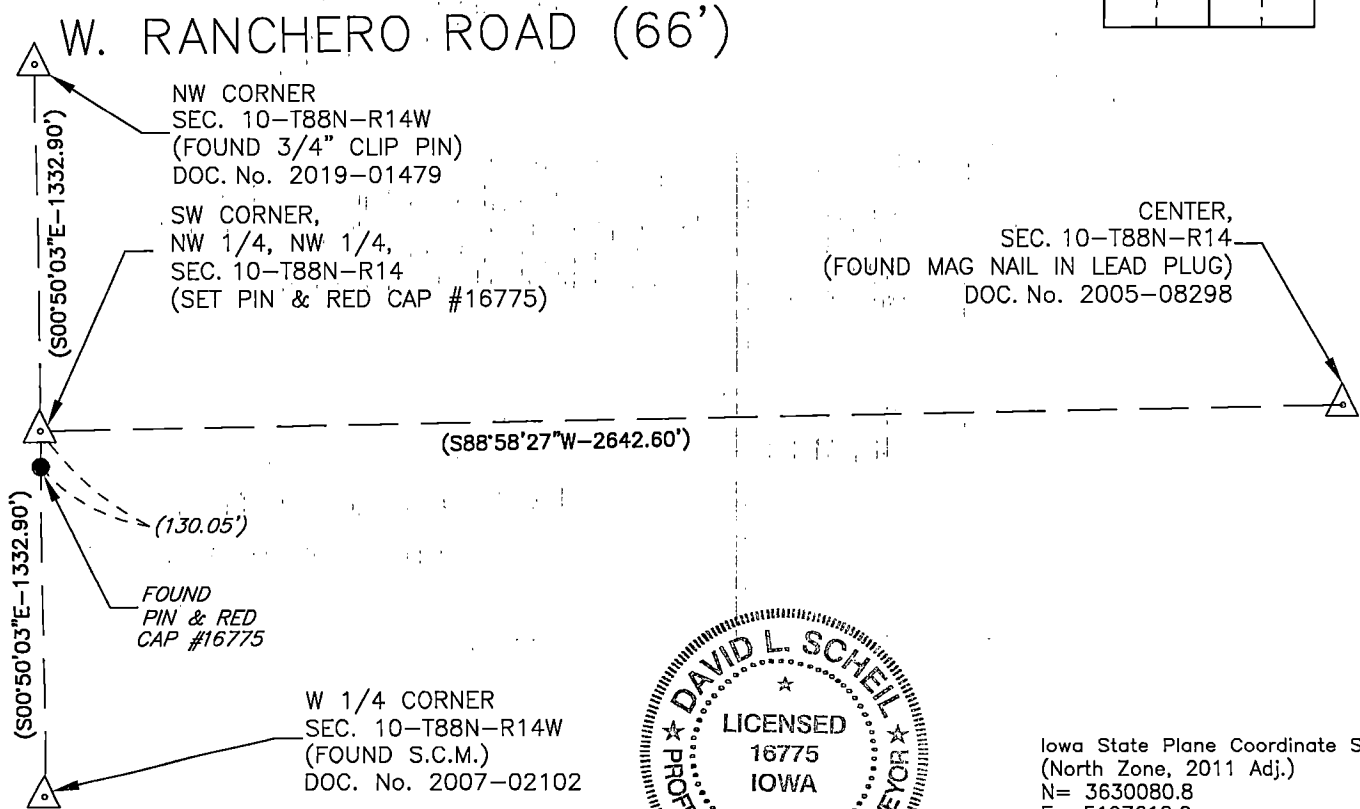
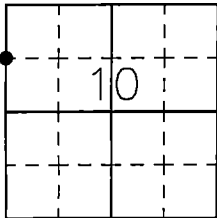
Land Survey Monuments situated in Section 10, Township 88 North, Range 14 West, of the Fifth Principal Meridian, Black Hawk County, Iowa.

Previously recorded in (book, page, document number, etc.) in County Recorder's Office.

Monument Description and Remarks

Set 1/2" rebar and red cap #16775 at midpoint of the NW corner and W 1/4 corner of Section 10.

- Reason for filing certificate:
- PLAN - VIEW
- ☒ There is no certificate on file with the Recorder's Office.
 - ☐ Accepts corner position which differs from the one shown in above document.
 - ☐ The corner monument was replaced or modified.
 - ☐ The reference ties in above document were incorrect or missing.



Iowa State Plane Coordinate System
(North Zone, 2011 Adj.)
N= 3630080.8
E= 5197612.0
(for location purposes only)

I hereby certify that this land surveying document was prepared and the related survey work was performed by me or under my direct personal supervision and that I am a duly Licensed Land Surveyor under the laws of the State of Iowa.

Signature: David L. Scheil
David L. Scheil, L.S.
Date: March 28, 2022 Lic. No. 16775
Pages or Sheets Covered by this Seal: THIS SHEET ONLY.
My license renewal date is December 31, 2022
SEAL

List Corners to be Indexed			
Corners	Section	Twp	Range
SW CORNER, NW 1/4, NW 1/4,	10	88 N	14 W
SE CORNER, NE 1/4, NE 1/4,	09	88 N	14 W