

PREPARED BY / RETURN TO: KENNETH D. STARK IOWA DEPARTMENT OF TRANSPORTATION 1420 4th ST. SE MASON CITY, IA 50401 641-423-7584

UNITED STATES PUBLIC LAND SURVEY CORNER CERTIFICATE
OF

Land Survey Monuments situated in Section 10, Township 88N, Range 14W
of the Fifth Principal Meridian, BLACK HAWK County, Iowa.

Previously recorded in MISC. 343 NA p. 508 08/07/2001 in County Recorder's Office.
(book, page, document number, etc.)

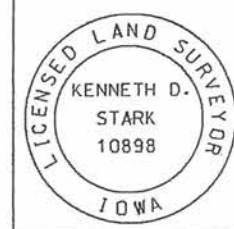
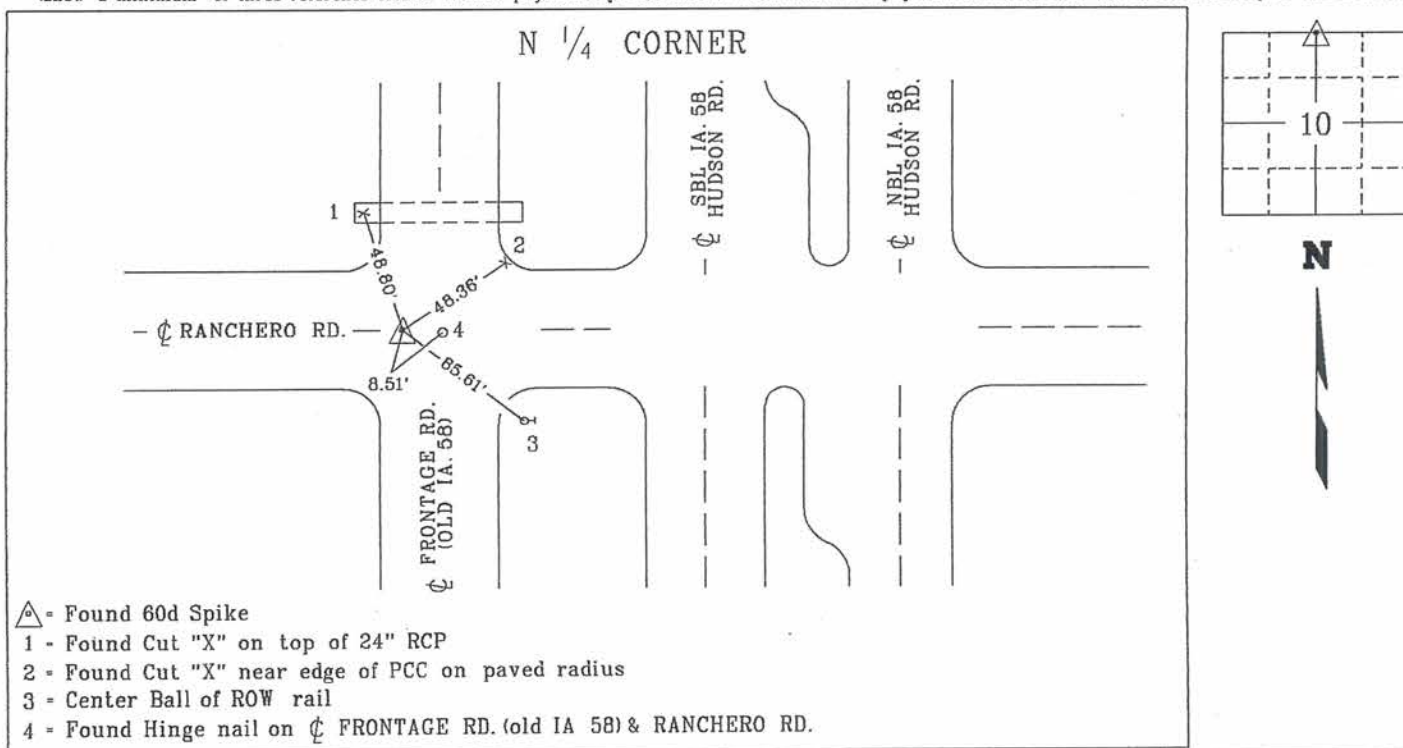
(Show reason for preparing this certificate, the evidence and detailed procedures used in establishing the corner positions and monumentation found or placed.)

Monument Description and Remarks: _____

N 1/4 CORNER Found 60d spike 0.1' deep in ACC pavement 8.55' West of P.O.T. 991+06.10
(1968 IA. 58 Survey) as recorded on Land Corner Survey Project F-U-UG-520-6(2)--27-07 Dated
July 1, 1971 on file in District 2 ROW Office in Mason City. Reason for cert no cert of record
and updating IDOT records.

PLAN - VIEW

(Show a minimum of three reference ties to durable physical objects, relevant monuments and physical conditions that will enable recovery of the corner.)



I hereby certify that this land surveying document was prepared and the related survey work was performed by me or under my personal supervision and that I am a duly licensed Land Surveyor under the laws of the state of Iowa.
Kenneth D. Stark Date 12-23-11
License number 10898
My License renewal date is December 31, 2011
Pages or sheets covered by this seal. 1

List Corners to be Indexed

Corner	Section	Township	Range
N 1/4 CORNER	10	88N	14W

cls 12/11

Tied: dlm

07-10-88-14