

PREPARED BY / RETURN TO: MIRANDA K. EILDERS IOWA DEPARTMENT OF TRANSPORTATION 428 43rd ST. SW MASON CITY, IA 50401 641-423-7584

UNITED STATES PUBLIC LAND SURVEY CORNER CERTIFICATE
OF

Land Survey Monuments situated in Section 10, Township 88N, Range 14W
of the Fifth Principal Meridian, BLACK HAWK County, Iowa.

Previously recorded in DOC 2007-002103 FEE BOOK 2005-08298 in County Recorder's Office.
(book, page, document number, etc.)

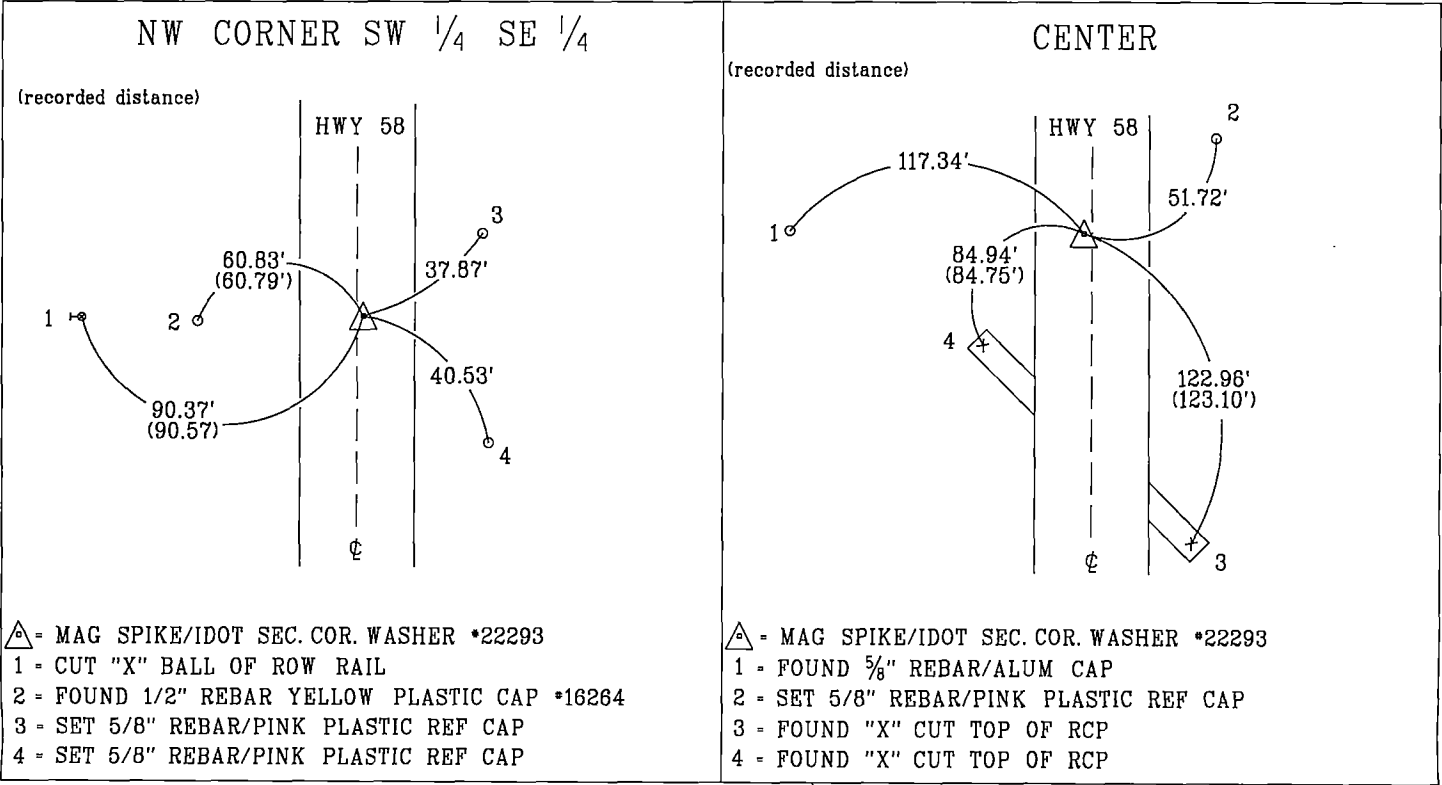
(Show reason for preparing this certificate, the evidence and detailed procedures used in establishing the corner positions and monumentation found or placed.)

Monument Description and Remarks: NW CORNER SW 1/4 SE 1/4: REPLACED PREVIOUSLY FOUND
MAG NAIL STEM WITH MAG SPIKE/IDOT WASHER *22293 1.1' EAST 1/4 IA 58 PER CERT OF RECORD
DOC *2007002103 AFTER 2023 HMA RESURFACING PROJECT *NHSX-058-1(100)--3H-07.
REASON FOR CERT: MONUMENTATION AND TIES HAVE CHANGED.

CENTER: REPLACED PREVIOUSLY FOUND MAG NAIL WITH MAG SPIKE/IDOT WASHER *22293 1.7' WEST
1/4 IA 58 PER CERT OF RECORD FEE BOOK *2005 08298 AFTER 2023 HMA RESURFACING
PROJECT *NHSX-058-1(100)--3H-07.
REASON FOR CERT: MONUMENTATION AND TIES HAVE CHANGED.

PLAN - VIEW

(Show a minimum of three reference ties to durable physical objects, relevant monuments and physical conditions that will enable recovery of the corner.)



PROFESSIONAL LAND SURVEYOR

MIRANDA K. EILDERS

22293

IOWA

I hereby certify that this land surveying document was prepared and the related survey work was performed by me or under my personal supervision and that I am duly licensed professional Land Surveyor under the laws of the state of Iowa.

Miranda K. Eilders 12-13-2023
Miranda K. Eilders Date
License number 22293
My License renewal date is December 31, 2023
Pages or sheets covered by this seal. 1

List Corners to be Indexed			
Corner	Section	Township	Range
NW CORNER SW 1/4 SE 1/4	10	88N	14W
CENTER	10	88N	14W

10

N