

HELLAND ENGINEERING & SURVEYING LTD

13

P

Z

Document Number: 2007002103

Date: Jul 26, 2006 3:36:30 pm

Aud Fee:	0.00	Rec Fee:	5.00
----------	------	----------	------

Trans Tax:	0.00	Rec Management Fee:	1.00
------------	------	---------------------	------

E-Com Fee: 1.00 Non-Standard Page Fee: - 0.00

Filed for record in Black Hawk County, Iowa
Patricia S. Sass, County Recorder

Jeffrey P. Helland, 1107 Technology Parkway, Cedar Falls, Iowa 50613-6951, (319)-266-0161

UNITED STATES PUBLIC LAND SURVEY CORNER CERTIFICATE OF

LAND SURVEY MONUMENTS SITUATED IN SECTION NO. 10, TOWNSHIP NO. 88 NORTH, RANGE
NO. 14 WEST OF THE FIFTH PRINCIPAL MERIDIAN, BLACK HAWK COUNTY, IOWA.
PREVIOUSLY RECORDED IN _____

(SHOW REASON FOR PREPARING THIS CERTIFICATE, THE EVIDENCE AND DETAILED PROCEDURES USED IN ESTABLISHING THE CORNER POSITIONS AND MONUMENTATION FOUND OR PLACED.)

MONUMENT DESCRIPTION AND REMARKS:

NO USPLSCC ON FILE. SURVEY COMPLETED IN THE N 1/2 SW 1/4 OF SEC. 10-T88N-R14W.

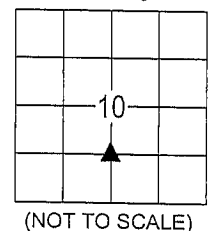
— **NE CORNER SE 1/4 SW 1/4:** NO BLACK HAWK COUNTY ENGINEER REFERENCE TIES AVAILABLE. PLAT OF SURVEY DATED 4/10/1857 CALLS FOR [POST IN MOUND PIT]. SET "MAG" NAIL IN A.C.C. PAVEMENT ON A LINE BETWEEN THE CENTER AND THE S 1/4 CORNER OF SAID SEC. 10 @ PRORATED DISTANCE PER R.O.W. EASEMENTS BOOK 91 PAGES 530 & 580. CORNER IS 1.1' EAST OF APPROXIMATE CENTERLINE JOINT.

PLAN VIEW

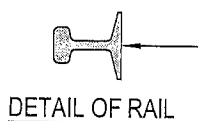
(SHOW A MINIMUM OF THREE REFERENCE TIES TO DURABLE PHYSICAL OBJECTS, RELEVANT MONUMENTS AND PHYSICAL CONDITIONS THAT WILL ENABLE RECOVERY OF THE CORNER.)

SEC. 10-T88N-R14W
FOUND "MAG" NAIL IN LEAD PLUG
IN P.C.C. PAVEMENT
PER FEE BK #2005-8298

(0.0')μ PER SURVEY DATED 4/10/1857
(0.0')D PER IHC LAND CORNER SURVEY
(0.0')WPA PER WPA CHAINING NOTES
(0.0')§ PER R.O.W. EASEMENTS BK 91 PGS 530 & 580
(0.0')¥ PER 593 LD 63

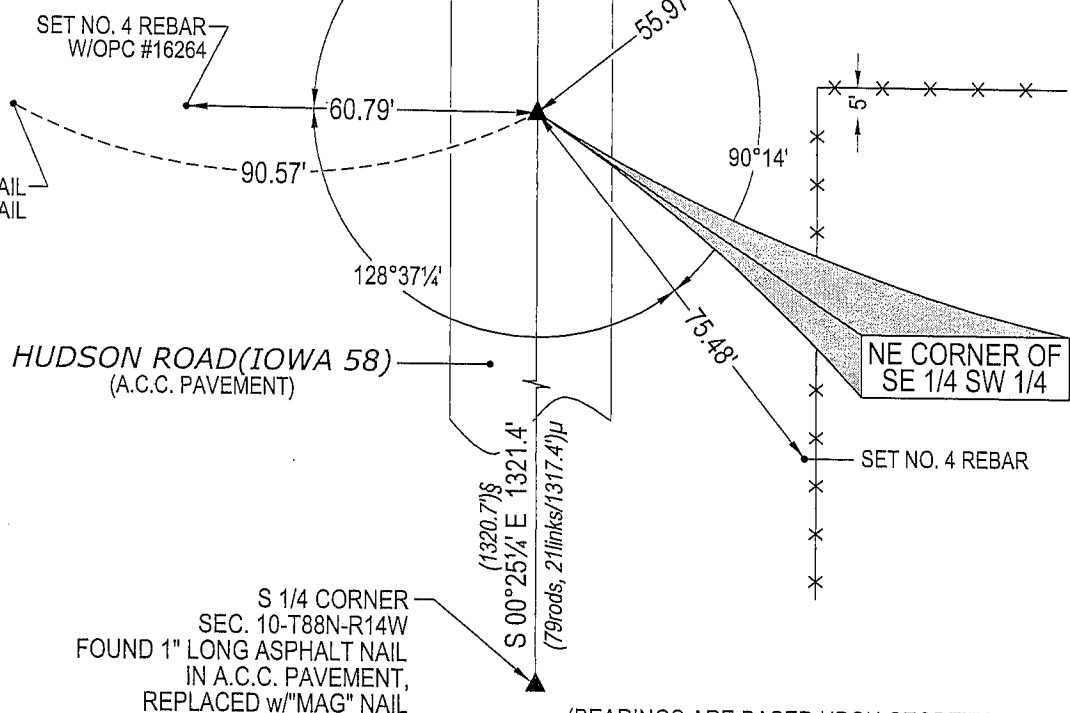


(NOT TO SCALE)



DETAIL OF RAIL

FOUND R.O.W. RAIL—
SEE DETAIL



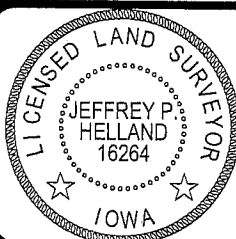
(BEARINGS ARE BASED UPON GEODETIC NORTH)



HELLAND ENGINEERING & SURVEYING, LTD.
1107 Technology Parkway
Cedar Falls, Iowa 50613-6951
(319)-266-0161

SHINER = 8D NAIL & 1 15/16"Ø METAL SHINER
OPC = PLASTIC CAP (O=ORANGE, R=RED, Y=YELLOW)

(00') RECORDED AS FILE NAME: 06-212C3.DWG



I hereby certify that this land surveying document was prepared and the related survey work was performed by me or under my direct personal supervision and that I am a duly licensed Land Surveyor under the laws of the State of Iowa.

Jeffrey P. Helling 7/20/06
License Number 16264
My license renewal date is December 31, 2007.
All pages or sheets are covered by this seal except:

LIST CORNERS TO BE INDEXED

EAST CORNERS TO BE INDEXED			
CORNER	SECTION	TOWNSHIP	RANGE

NE CORNER	10	88N	14W
SE 1/4 SW 1/4			