

UNITED STATES PUBLIC LAND SURVEY CORNER CERTIFICATE

Land Survey Monuments situated in Section 9, Township 88 North, Range 14 West, of the Fifth Principal Meridian, Black Hawk County, Iowa.

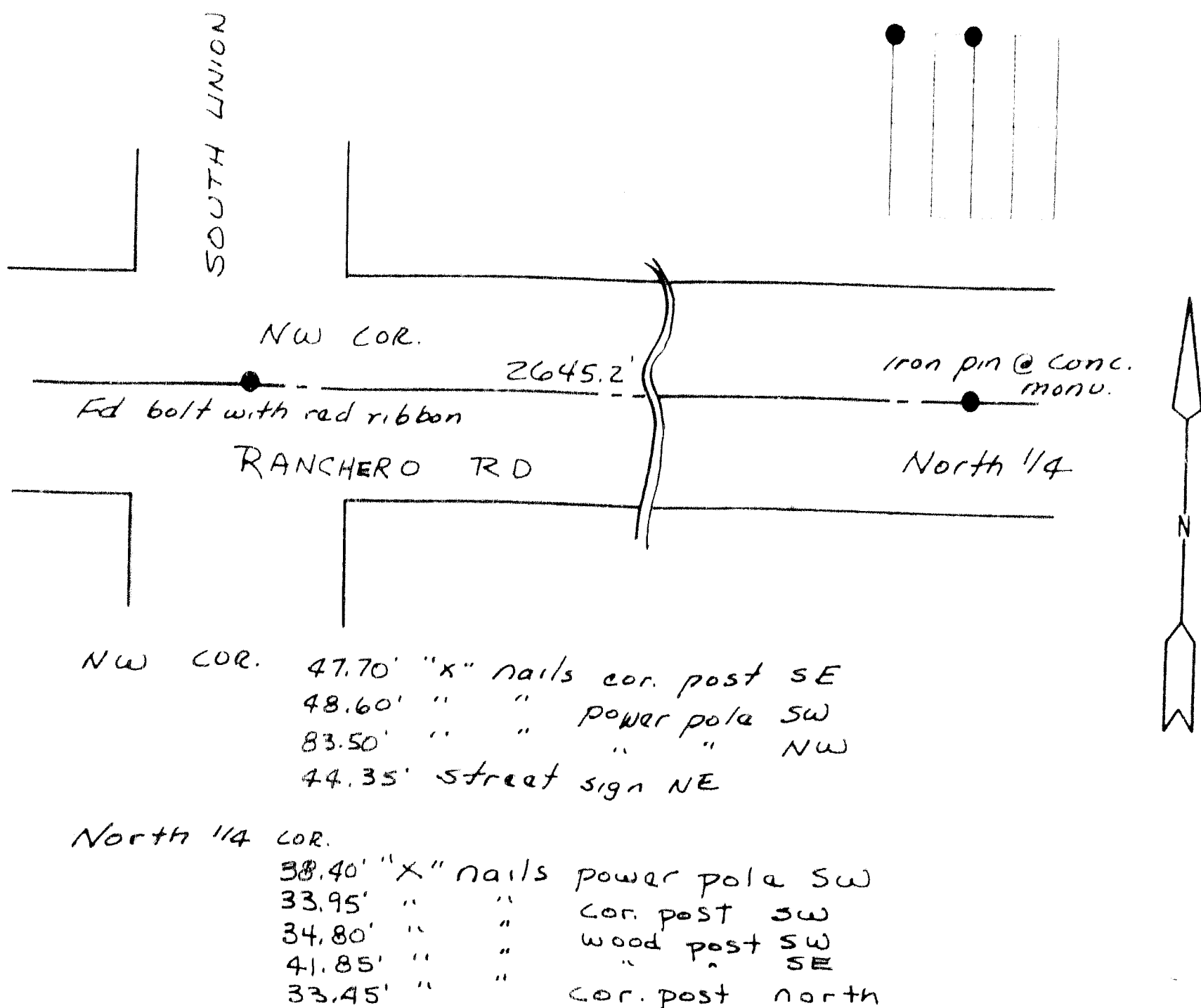
Previously recorded in N/A in County Recorder's Office.
(book, page, document number, etc.)

(Show reason for preparing this certificate, the evidence and detailed procedures used in establishing the corner positions and monumentation found or placed.)

Monument Description and Remarks: Found iron pin beside conc. monu. Conc. monu was bent over. Took iron pin as it fit several of County ties. Found bolt with ribbon over conc. monu. at NW corner of section

PLAN - VIEW

(Show a minimum of three reference ties to durable physical objects, relevant monuments and physical conditions that will enable recovery of the corner)



I hereby certify that the survey work was completed and this land surveying document was prepared by me or under my direct personal supervision and that I am a duly licensed land surveyor under the laws of the state of Iowa.

Signature: Steve Busse
Name typed or printed STEVE BUSSE

Date: 2/1/2001 Reg. No. 9018

My license renewal date is December 31, 2000

SEAL

Corners	List Corners to be Indexed		
	Section	Twp	Range
NW COR.	9	88	14
N 1/4 COR.	9	88	14