

Jeffrey P. Helland, 1107 Technology Parkway, Cedar Falls, Iowa 50613-6951, (319)-266-0161

# UNITED STATES PUBLIC LAND SURVEY CORNER CERTIFICATE OF

LAND SURVEY MONUMENTS SITUATED IN SECTION NO. 9, TOWNSHIP NO. 88 NORTH, RANGE NO. 14 WEST OF THE FIFTH PRINCIPAL MERIDIAN, BLACK HAWK COUNTY, IOWA.

PREVIOUSLY RECORDED IN \_\_\_\_\_

(SHOW REASON FOR PREPARING THIS CERTIFICATE, THE EVIDENCE AND DETAILED PROCEDURES USED IN ESTABLISHING THE CORNER POSITIONS AND MONUMENTATION FOUND OR PLACED.)

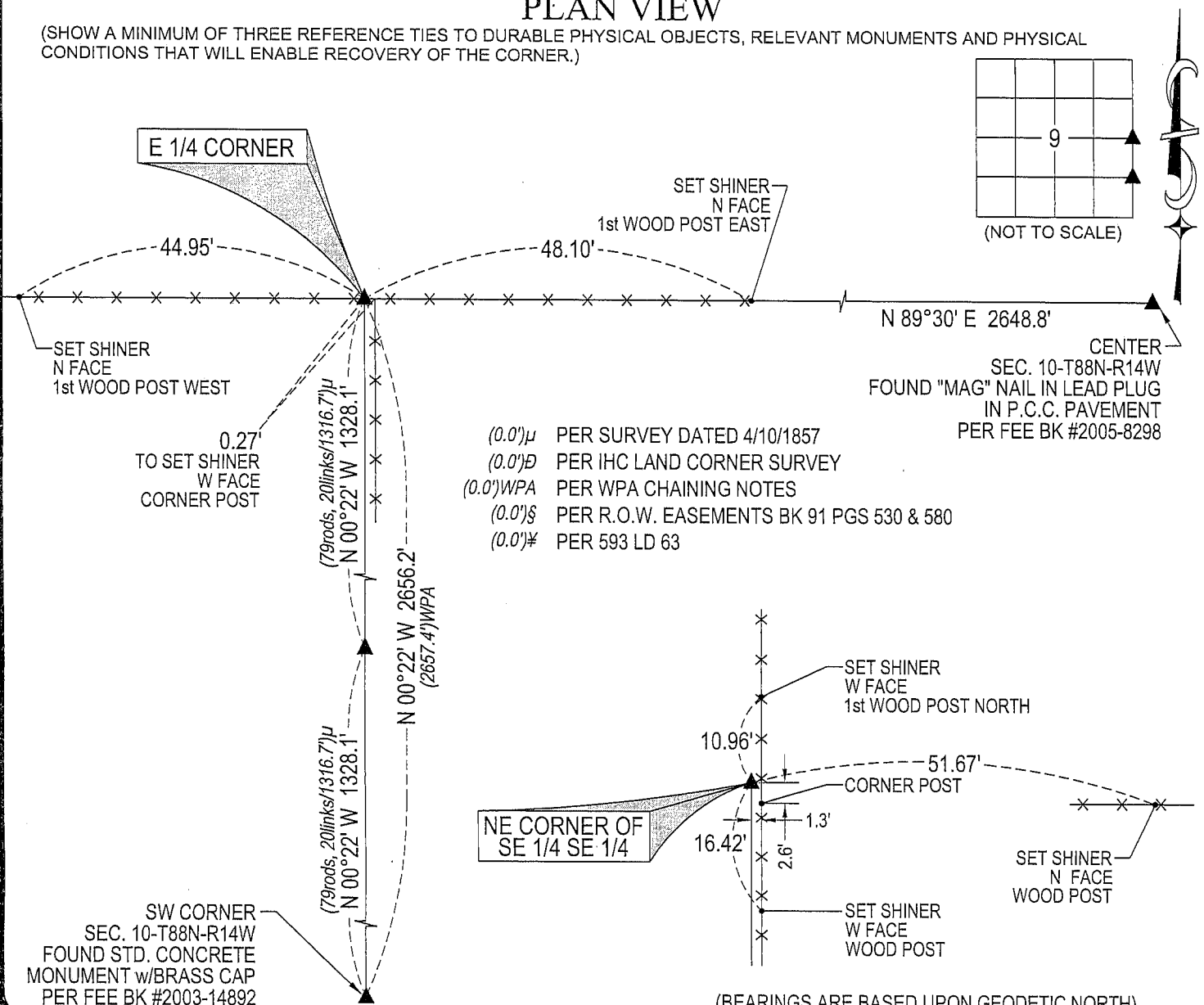
MONUMENT DESCRIPTION AND REMARKS:

NO USPLSCC ON FILE. SURVEY COMPLETED IN THE N 1/2 SW 1/4 OF SEC. 10-T88N-R14W.

- **E 1/4 CORNER:** BLACK HAWK COUNTY ENGINEER REFERENCE TIES DATED 11/16/1939 CALLS FOR [STANDARD CONCRETE MONUMENT w/BRASS CAP]. ALL REFERENCE TIES HAVE BEEN OBLITERATED. FOUND STANDARD CONCRETE MONUMENT w/BRASS CAP FLUSH w/GROUND SURFACE, SET NO. 4 REBAR ON NORTH SIDE FOR MAGNETIC DETECTION.
- **NE CORNER SE 1/4 SE 1/4:** NO BLACK HAWK COUNTY ENGINEER REFERENCE TIES AVAILABLE. PLAT OF SURVEY DATED 4/10/1857 CALLS FOR [POST IN MOUND PIT]. SET NO. 4 REBAR w/OPC #16264 AT THE MIDPOINT OF A LINE BETWEEN THE SE CORNER AND THE E 1/4 CORNER.

### PLAN VIEW

(SHOW A MINIMUM OF THREE REFERENCE TIES TO DURABLE PHYSICAL OBJECTS, RELEVANT MONUMENTS AND PHYSICAL CONDITIONS THAT WILL ENABLE RECOVERY OF THE CORNER.)



(BEARINGS ARE BASED UPON GEODETIC NORTH)



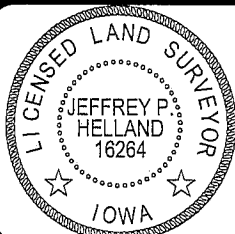
HELLAND ENGINEERING & SURVEYING, LTD.

1107 Technology Parkway  
Cedar Falls, Iowa 50613-6951  
(319)-266-0161

SHINER = 8D NAIL & 1 15/16"Ø METAL SHINER  
OPC = PLASTIC CAP (O=ORANGE, R=RED, Y=YELLOW)

(00') RECORDED AS

FILE NAME: 06-212C1.DWG



I hereby certify that this land surveying document was prepared and the related survey work was performed by me or under my direct personal supervision and that I am a duly licensed Land Surveyor under the laws of the State of Iowa.

Seal is void under the laws of the state of Iowa.  
*Jeffrey P. Helland* 7/20/06  
 Jeffrey P. Helland  
 License Number 16264  
 My license renewal date is December 31, 2007.  
 All pages or sheets are covered by this seal except:

## LIST CORNERS TO BE INDEXED

CORNER	SECTION	TOWNSHIP	RANGE
E 1/4 CORNER	9	88N	14W
NE CORNER	9	88N	14W
SE 1/4 SE 1/4			