



Doc ID: 007218080001 Type: GEN  
Recorded: 11/28/2016 at 09:04:55 AM  
Fee Amt: \$7.00 Page 1 of 1  
Black Hawk County Iowa  
SANDIE L. SMITH RECORDER

File 2017-00009981



WAYNE CLAASSEN ENGINEERING AND SURVEYING, INC.  
P.O. BOX 898 WATERLOO, IOWA 50704-0898

PHONE: (VOICE) 319-235-6294  
(FAX) 319-235-0028

## UNITED STATES PUBLIC LAND SURVEY CORNER CERTIFICATE

Land Survey Monuments situated in Section 09, Township 88 North, Range 14 West, of the Fifth Principal Meridian, Black Hawk County, Iowa.

Previously recorded in \_\_\_\_\_ in County Recorder's Office.  
(book, page, document number, etc.)

### Monument Description and Remarks

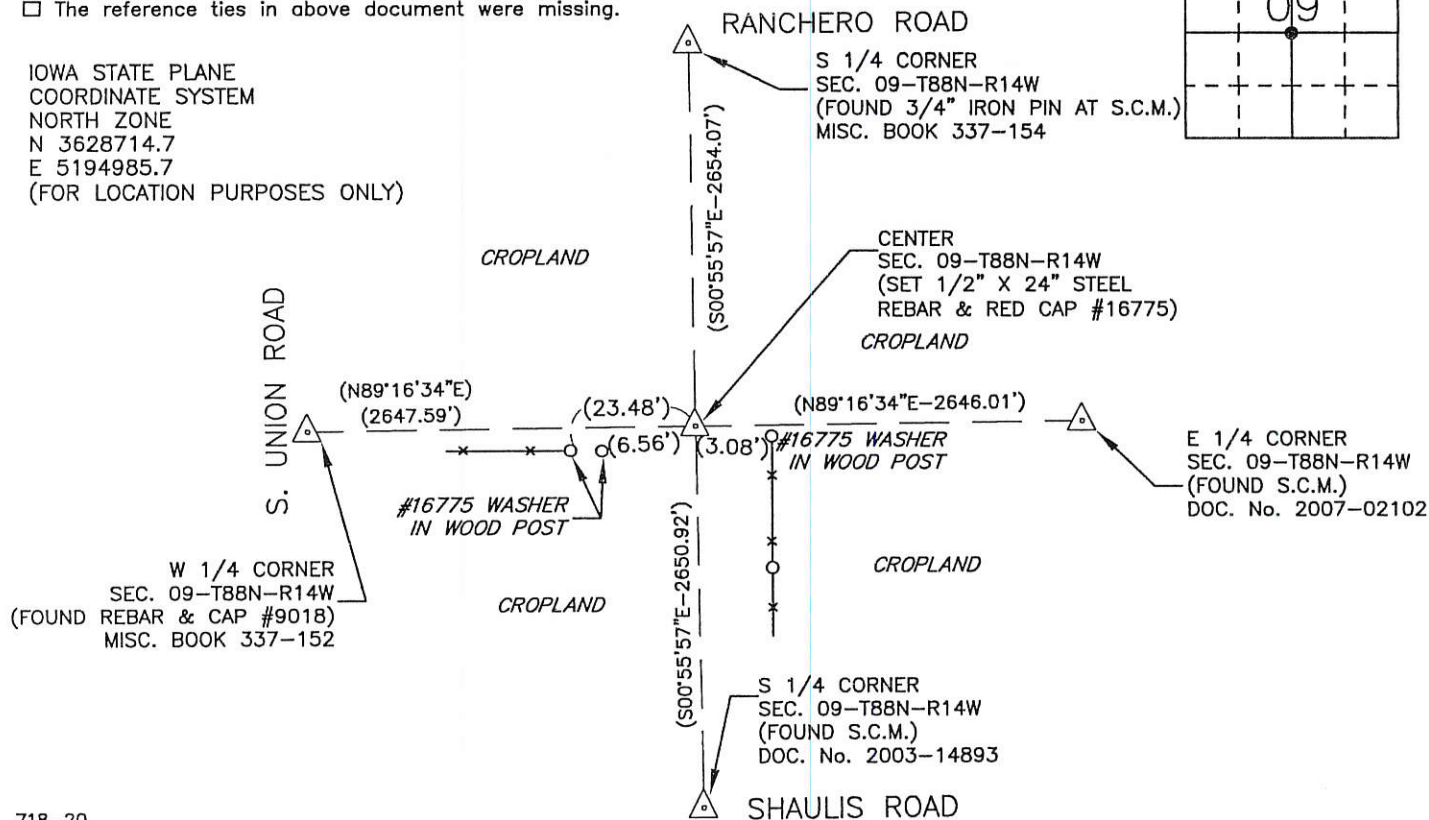
Went to location of center of Section and look for monumentation and found none. Set 1/2" X 24" Steel rebar and red cap #16775 at intersection of opposite quarter corners.

### PLAN - VIEW

#### Reason for filing certificate:

- ☒ There is no certificate on file with the Recorder's Office.  
☐ Accepts corner position which differs from the one shown in above document.  
☐ The corner monument was replaced or modified.  
☐ The reference ties in above document were missing.

IOWA STATE PLANE  
COORDINATE SYSTEM  
NORTH ZONE  
N 3628714.7  
E 5194985.7  
(FOR LOCATION PURPOSES ONLY)



718-20

I hereby certify that this land surveying document was prepared and the related survey work was performed by me or under my direct personal supervision and that I am a duly Licensed Land Surveyor under the laws of the State of Iowa.

Signature: David L. Scheil  
David L. Scheil, L.S.

Date: Nov. 23, 2016 Lic. No. 16775

Pages or Sheets Covered by this Seal: THIS SHEET ONLY.

My license renewal date is December 31, 2016

SEAL

#### List Corners to be Indexed

Corners	Section	Twp	Range
CENTER,	09	88 N	14 W

