

Reserved for County Recorder's use.

Doc ID: 010468910001 Type: GEN
Recorded: 06/02/2022 at 03:39:01 PM
Fee Amt: \$7.00 Page 1 of 1
Black Hawk County Iowa
SANDIE L. SMITH RECORDER
File **2022-00023415**

Kyle J. Helland, 6109 Chancellor Drive, Cedar Falls, Iowa 50613-6916, (319)-266-0161

UNITED STATES PUBLIC LAND SURVEY CORNER CERTIFICATE
OF

LAND SURVEY MONUMENTS SITUATED IN SECTION NO. 8, TOWNSHIP NO. 88 NORTH, RANGE
NO. 14 WEST OF THE FIFTH PRINCIPAL MERIDIAN, BLACK HAWK COUNTY, IOWA.
PREVIOUSLY RECORDED IN N/A

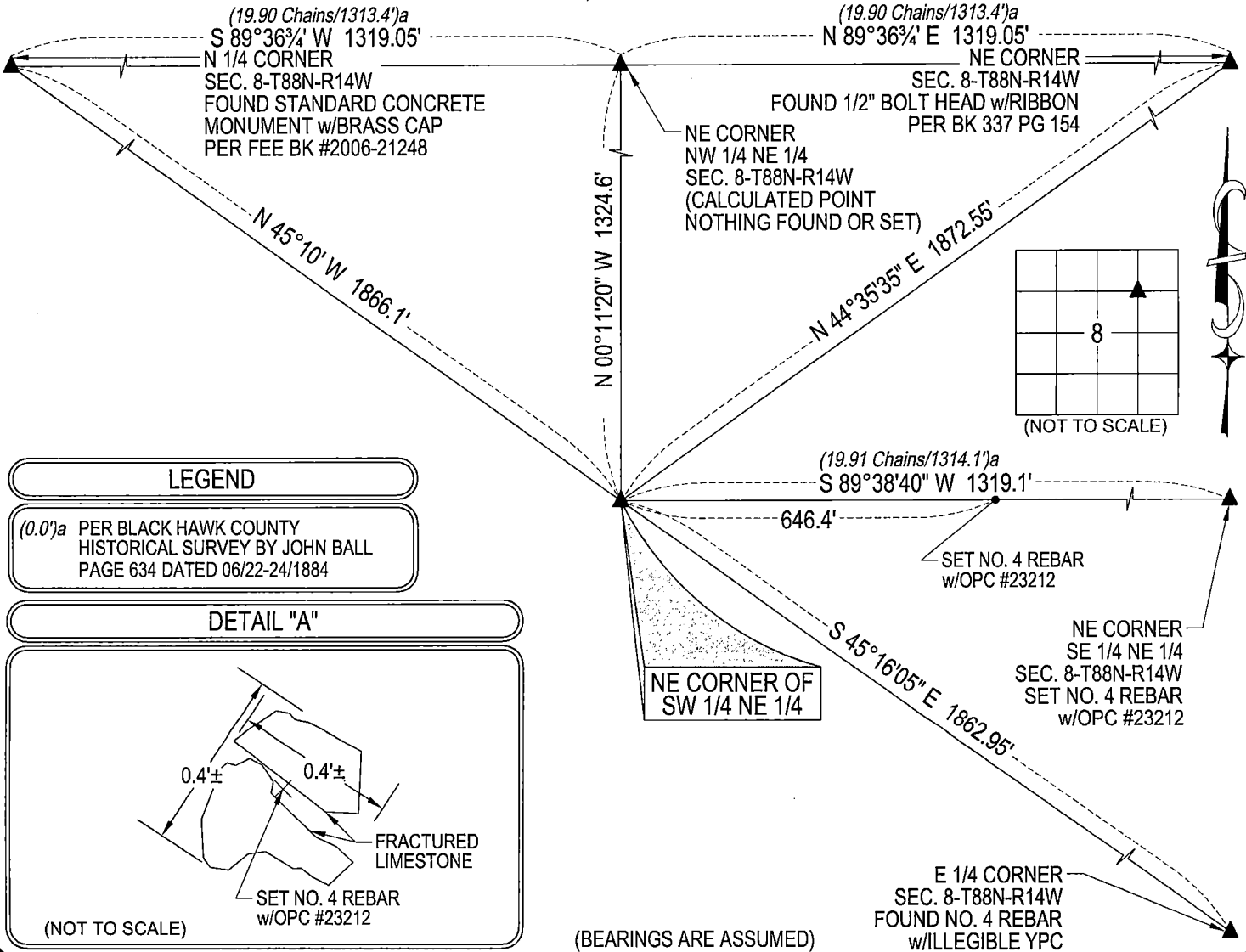
(SHOW REASON FOR PREPARING THIS CERTIFICATE, THE EVIDENCE AND DETAILED PROCEDURES USED IN ESTABLISHING THE
CORNER POSITIONS AND MONUMENTATION FOUND OR PLACED.)

MONUMENT DESCRIPTION AND REMARKS:
NO USPLSCC ON FILE. SURVEY COMPLETED IN THE NE 1/4 OF SEC. 8-T88N-R14W.

NE CORNER OF SW 1/4 NE 1/4: NO BLACK HAWK COUNTY ENGINEER TIES AVAILABLE. HISTORICAL SURVEY BY JOHN
BALL DATED 06/22-24/1884 CALLS FOR [STONE & STAKE]. SEARCHED AREA WITH MAGNETIC DETECTOR, PROBED, AND
FOUND FRACTURED LIMESTONE 0.4'± NW-SE x 0.4'± (X2) NE-SW 1.0'± DEEP. SET NO. 4 REBAR w/OPC #23212 IN MIDDLE
OF FRACTURED LIMESTONE AND UTILIZED SAID SET REBAR AS CORNER.
NO OTHER DURABLE, GERMANE PHYSICAL OBJECTS TO REFERENCE TO.
SEE DETAIL "A".

PLAN VIEW

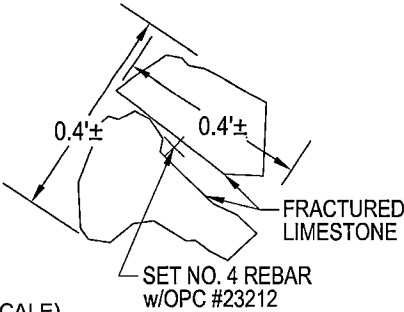
(SHOW A MINIMUM OF THREE REFERENCE TIES TO DURABLE PHYSICAL OBJECTS, RELEVANT MONUMENTS AND PHYSICAL
CONDITIONS THAT WILL ENABLE RECOVERY OF THE CORNER.)



LEGEND

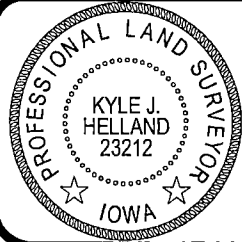
(0.0')a PER BLACK HAWK COUNTY
HISTORICAL SURVEY BY JOHN BALL
PAGE 634 DATED 06/22-24/1884

DETAIL "A"



HELLAND ENGINEERING & SURVEYING, LTD.
6109 Chancellor Drive
Cedar Falls, Iowa 50613-6916
(319)-266-0161

BRASS TAG = 4d. NAIL & 13/16"Ø BRASS TAG DRAWN BY: KDA
SHINER = 1"Ø STEEL SHINER w/MASONRY NAIL
OPC = PLASTIC CAP (O=ORANGE, R=RED, Y=YELLOW)
(00') RECORDED AS FILE NAME: 22-153-35.DWG



I hereby certify that this land surveying document was prepared
and the related survey work was performed by me or under my
direct personal supervision and that I am a duly licensed
Professional Land Surveyor under the laws of the State of Iowa.
Kyle J. Helland
License Number 23212
My license renewal date is December 31, 2023.
All pages or sheets are covered by this seal except:

LIST CORNERS TO BE INDEXED

CORNER	SECTION	TOWNSHIP	RANGE
NE COR. SW 1/4 NE 1/4	8	88N	14W
SE COR. NW 1/4 NE 1/4	8	88N	14W
SW COR. NE 1/4 NE 1/4	8	88N	14W
NW COR. SE 1/4 NE 1/4	8	88N	14W