

Reserved for County Recorder's use.

Doc ID: 010468920001 Type: GEN  
Recorded: 06/02/2022 at 03:39:10 PM  
Fee Amt: \$7.00 Page 1 of 1  
Black Hawk County Iowa  
SANDIE L. SMITH RECORDER  
File **2022-00023416**

Kyle J. Helland, 6109 Chancellor Drive, Cedar Falls, Iowa 50613-6916, (319)-266-0161

UNITED STATES PUBLIC LAND SURVEY CORNER CERTIFICATE  
OF

LAND SURVEY MONUMENTS SITUATED IN SECTION NO. 8, TOWNSHIP NO. 88 NORTH, RANGE  
NO. 14 WEST OF THE FIFTH PRINCIPAL MERIDIAN, BLACK HAWK COUNTY, IOWA.  
PREVIOUSLY RECORDED IN N/A

(SHOW REASON FOR PREPARING THIS CERTIFICATE, THE EVIDENCE AND DETAILED PROCEDURES USED IN ESTABLISHING THE  
CORNER POSITIONS AND MONUMENTATION FOUND OR PLACED.)

MONUMENT DESCRIPTION AND REMARKS:

NO USPLSCC ON FILE. SURVEY COMPLETED IN THE NE 1/4 OF SEC. 8-T88N-R14W.

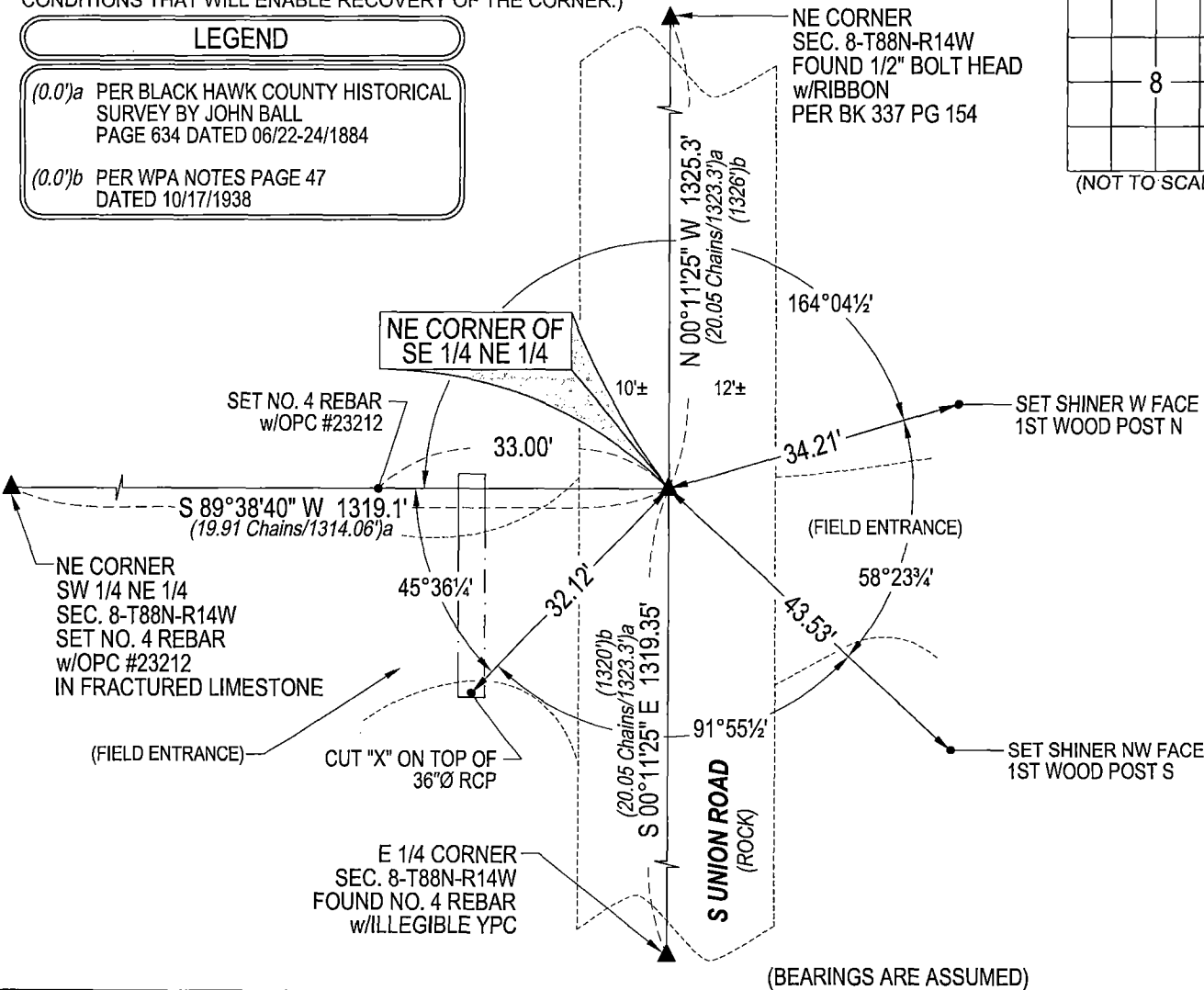
→ **NE CORNER OF SE 1/4 NE 1/4:** NO BLACK HAWK COUNTY ENGINEER TIES AVAILABLE. HISTORICAL SURVEY BY JOHN BALL PAGE 634 DATED 06/22-24/1884 CALLS FOR [STONE & STAKE]. WPA NOTES PAGE 47 DATED 10/17/1938 CALLS FOR [FC. W]. SEARCHED AREA WITH MAGNETIC DETECTOR, EXCAVATED 5± N-S x 1.5± E-W x 2± DEEP HOLE, PROBED IN ALL DIRECTIONS, AND FOUND NOTHING. SEARCHED WEST FOR EVIDENCE OF PREVIOUS FENCELINE, AND FOUND MULTIPLE BROKEN OFF T-POST BASES INDICATING OLD FENCELINE. THEREFORE SET NO. 4 REBAR w/OPC #23212 AT PRORATED DISTANCE BASED ON SAID WPA NOTES AND ON LINE BETWEEN NE 1/4 AND E 1/4 CORNER. UTILIZED SAID SET REBAR AS CORNER. SAID CORNER FITS WITHIN REASON OF EXTENSION OF FOUND BASES OF SAID FENCE POSTS.

PLAN VIEW

(SHOW A MINIMUM OF THREE REFERENCE TIES TO DURABLE PHYSICAL OBJECTS, RELEVANT MONUMENTS AND PHYSICAL  
CONDITIONS THAT WILL ENABLE RECOVERY OF THE CORNER.)

LEGEND

- (0.0')a PER BLACK HAWK COUNTY HISTORICAL  
SURVEY BY JOHN BALL  
PAGE 634 DATED 06/22-24/1884
- (0.0')b PER WPA NOTES PAGE 47  
DATED 10/17/1938



(BEARINGS ARE ASSUMED)



HELLAND ENGINEERING & SURVEYING, LTD.  
6109 Chancellor Drive  
Cedar Falls, Iowa 50613-6916  
(319)-266-0161

BRASS TAG = 4d. NAIL & 13/16\"Ø BRASS TAG DRAWN BY: KDA  
SHINER = 1\"Ø STEEL SHINER w/MASONRY NAIL  
OPC = PLASTIC CAP (O=ORANGE, R=RED, Y=YELLOW)  
(00') RECORDED AS FILE NAME: 22-153-32.DWG



I hereby certify that this land surveying document was prepared  
and the related survey work was performed by me or under my  
direct personal supervision and that I am a duly licensed  
Professional Land Surveyor under the laws of the State of Iowa.  
*Kyle J. Helland*  
Kyle J. Helland  
License Number 23212  
My license renewal date is December 31, 2023.  
All pages or sheets are covered by this seal except:

LIST CORNERS TO BE INDEXED

CORNER	SECTION	TOWNSHIP	RANGE
NE COR. SE 1/4 NE 1/4	8	88N	14W
SE COR. NE 1/4 NE 1/4	8	88N	14W
SW COR. NW 1/4 NW 1/4	9	88N	14W
NW COR. SW 1/4 NW 1/4	9	88N	14W