

INDEX

BLACK HAWK COUNTY, IOWA:ss

FEE BOOK #

2006 21248

PROOF

FILED FOR RECORD

MAR 3

2006

AT

4:00 P.M.

FEE

1-5.00-1.00X

COMPARED

Patricia A. Soss

BLACK HAWK COUNTY RECORDER

HELLAND ENGINEERING & SURVEYING LTD

Paul H. Helland, 1107 Technology Parkway, Cedar Falls, Iowa 50613-6951, (319)-266-0161

UNITED STATES PUBLIC LAND SURVEY CORNER CERTIFICATE
OFLAND SURVEY MONUMENTS SITUATED IN SECTION NO. 8, TOWNSHIP NO. 88 NORTH, RANGE
NO. 14 WEST OF THE FIFTH PRINCIPAL MERIDIAN, BLACK HAWK COUNTY, IOWA.

PREVIOUSLY RECORDED IN _____.

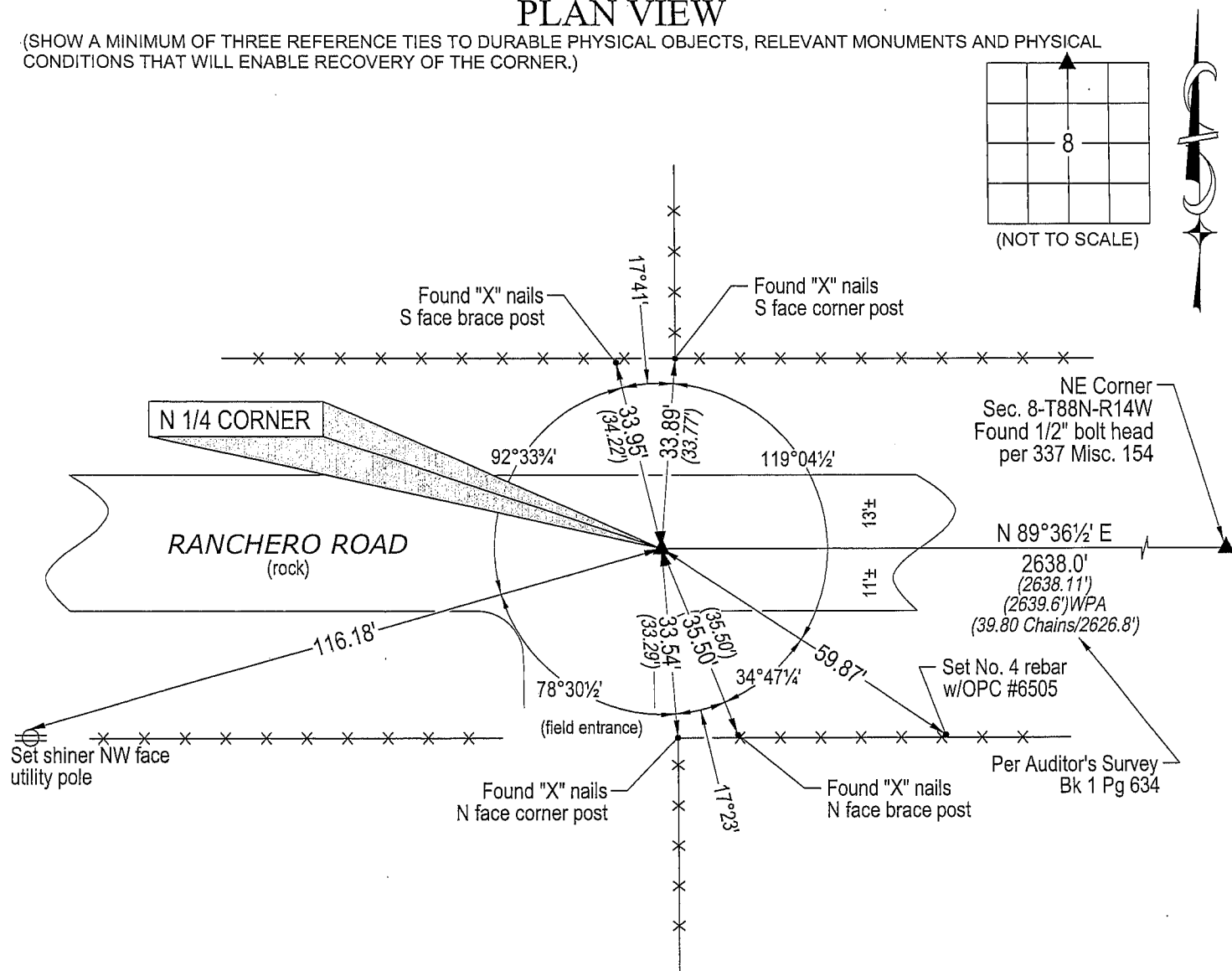
(SHOW REASON FOR PREPARING THIS CERTIFICATE, THE EVIDENCE AND DETAILED PROCEDURES USED IN ESTABLISHING THE
CORNER POSITIONS AND MONUMENTATION FOUND OR PLACED.)

MONUMENT DESCRIPTION AND REMARKS:

No USPLSCCs on file. Survey completed in the NE 1/4 of Sec. 8-T88N-T14W.

→ N 1/4 CORNER: Auditor's Survey Book 1 Page 634 calls for "Stone & Stake." WPA notes dated 12/5/1938 calls for "Found limestone 10"x6"x4", 15" West of sec. line, lowered evidence and C.M. on top 12" under ground." IDOT Land Corner Survey calls for "Found std. conc. mon. 6" deep." Found standard concrete monument w/brass cap 0.4' deep, found No. 4 rebar on South side for magnetic detection bent slightly over concrete monument and 0.1'± above concrete monument.

PLAN VIEW

(SHOW A MINIMUM OF THREE REFERENCE TIES TO DURABLE PHYSICAL OBJECTS, RELEVANT MONUMENTS AND PHYSICAL
CONDITIONS THAT WILL ENABLE RECOVERY OF THE CORNER.)

(Bearings are based upon Geodetic North)

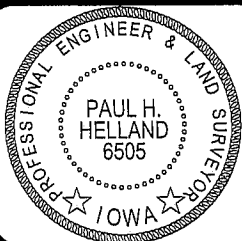


HELLAND ENGINEERING & SURVEYING, LTD.

1107 Technology Parkway
Cedar Falls, Iowa 50613-6951
(319)-266-0161shiner = 8d nail & 1 15/16"Ø metal shiner
OPC = Plastic cap (O=orange, R=red, Y=yellow)

(00') Recorded As

File Name: 06-134c1.dwg

I hereby certify that this land surveying document was prepared
and the related survey work was performed by me or under my
direct personal supervision and that I am a duly licensed Land
Surveyor under the laws of the State of Iowa.*Paul H. Helland* 3/3/06
Paul H. Helland
License Number 6505
My license renewal date is December 31, 2007.
All pages or sheets are covered by this seal except:

LIST CORNERS TO BE INDEXED

CORNER	SECTION	TOWNSHIP	RANGE
N 1/4 CORNER	8	88N	14W

Rec