

Reserved for County Recorder's use.



Doc ID: 011816270002 Type: GEN
Recorded: 08/19/2022 at 08:44:38 AM
Fee Amt: \$12.00 Page 1 of 2
Black Hawk County Iowa
SANDIE L. SMITH RECORDER

File **2023-00002967**

Jeffery P. Helland, 6109 Chancellor Drive, Cedar Falls, Iowa 50613-6916, (319)-266-0161

UNITED STATES PUBLIC LAND SURVEY CORNER CERTIFICATE
OF

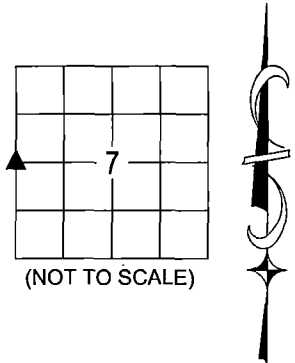
LAND SURVEY MONUMENTS SITUATED IN SECTION NO. 7, TOWNSHIP NO. 88 NORTH, RANGE
NO. 14 WEST OF THE FIFTH PRINCIPAL MERIDIAN, BLACK HAWK COUNTY, IOWA.
PREVIOUSLY RECORDED IN #20200001294.

(SHOW REASON FOR PREPARING THIS CERTIFICATE, THE EVIDENCE AND DETAILED PROCEDURES USED IN ESTABLISHING THE
CORNER POSITIONS AND MONUMENTATION FOUND OR PLACED.)

MONUMENT DESCRIPTION AND REMARKS:

ALL REFERENCE TIES HAVE BEEN OBLITERATED, MONUMENTATION HAS CHANGED. SURVEY COMPLETED IN THE SE 1/4
OF SEC. 12-T88N-R15W.

→ **W 1/4 CORNER:** W.P.A. NOTES DATED 11/10/1938 (FROM BLACK HAWK COUNTY ENGINEER'S OFFICE) CALL FOR [FOUND
OAK HUB 17"x2"x2" AND TWO IRON RODS 3/4" x 18" AND 1/2" x 23" - SET C.M. ON TOP 12" UNDERGROUND.]. GRUNDY
COUNTY ENGINEER TIES PAGE 154 DATED 03/19/1977 CALL FOR [SET 3/4" I.P. 3" DEEP]. USPLSCC FEE BOOK 2005
01163 DATED 07/07/2004 CALLS FOR [FOUND 1" CLIP PIN, 2" DEEP BELOW SURFACE]. USPLSCC #20200001294 DATED
07/22/2019 CALLS FOR [FOUND 1"Ø PINCHED PIPE WITH INFORMATION OBTAINED FROM A PREVIOUSLY RECORDED
SECTION CORNER CERTIFICATE]. SEARCHED AREA WITH MAGNETIC DETECTOR, EXCAVATED, AND FOUND BENT NO. 4
REBAR 0.8'± DEEP. CONTINUED EXCAVATION AND FOUND STRAIGHT NO. 6 REBAR 1.0'± DEEP. CONTINUED
EXCAVATION AND FOUND SCATTERED WOOD REMNANTS. CONTINUED EXCAVATION AND FOUND BROKEN CONCRETE
MONUMENT DIRECTLY SOUTH OF STRAIGHT REBAR 1.6'± DEEP. REMOVED BENT REBAR AND SET NO. 4 REBAR w/OPC
#16264 (1.5' LONG) DIRECTLY ABOVE SAID BROKEN CONCRETE MONUMENT (0.1'± DEEP). TIED OUT CORNER, SET "MAG"
NAIL (9/16"Ø HEAD) IN NEW A.C.C. PAVEMENT AFTER CONSTRUCTION WAS COMPLETED. SAID "MAG" NAIL IS 0.03'± EAST
OF CENTERLINE JOINT.



(NOT TO SCALE)

LEGEND

- (0.0')a PER WPA NOTES DATED 11/10/1938 (BH)
- (0.0')b PER PLAT OF SURVEY BK 73-C PG 110
DATED 06/02/1990 (G)
- (0.0')c PER PLAT OF SURVEY (BH)
FEE BK #2003 00574 DATED 07/07/2004
- (0.0')d PER ACQUISITION PLAT IN
INST. #2020-2328 DATED 09/16/2020 (G)

(BH) BLACK HAWK COUNTY
(G) GRUNDY COUNTY



HELLAND ENGINEERING & SURVEYING, LTD.
6109 Chancellor Drive
Cedar Falls, Iowa 50613-6916
(319)-266-0161

SHEET 1 OF 2

SHINER = 4d. NAIL & 1 5/16"Ø METAL SHINER DRAWN BY: JPH
BRASS TAG = 4d. NAIL & 13/16"Ø BRASS TAG
OPC = PLASTIC CAP (O=ORANGE, R=RED, Y=YELLOW)
(00') RECORDED AS FILE NAME: 22-264-22BH.DWG



I hereby certify that this land surveying document was prepared
and the related survey work was performed by me or under my
direct personal supervision and that I am a duly licensed
Professional Land Surveyor under the laws of the State of Iowa.
Jeffrey P. Helland 8/18/2022
Jeffrey P. Helland
License Number 16264
My license renewal date is December 31, 2023.
All pages or sheets are covered by this seal except:

LIST CORNERS TO BE INDEXED			
CORNER	SECTION	TOWNSHIP	RANGE
W 1/4 CORNER	7	88N	14W

96.00 v. 1m

1/21

2

Reserved for County Recorder's use.

Jeffery P. Helland, 6109 Chancellor Drive, Cedar Falls, Iowa 50613-6916, (319)-266-0161

UNITED STATES PUBLIC LAND SURVEY CORNER CERTIFICATE
OF

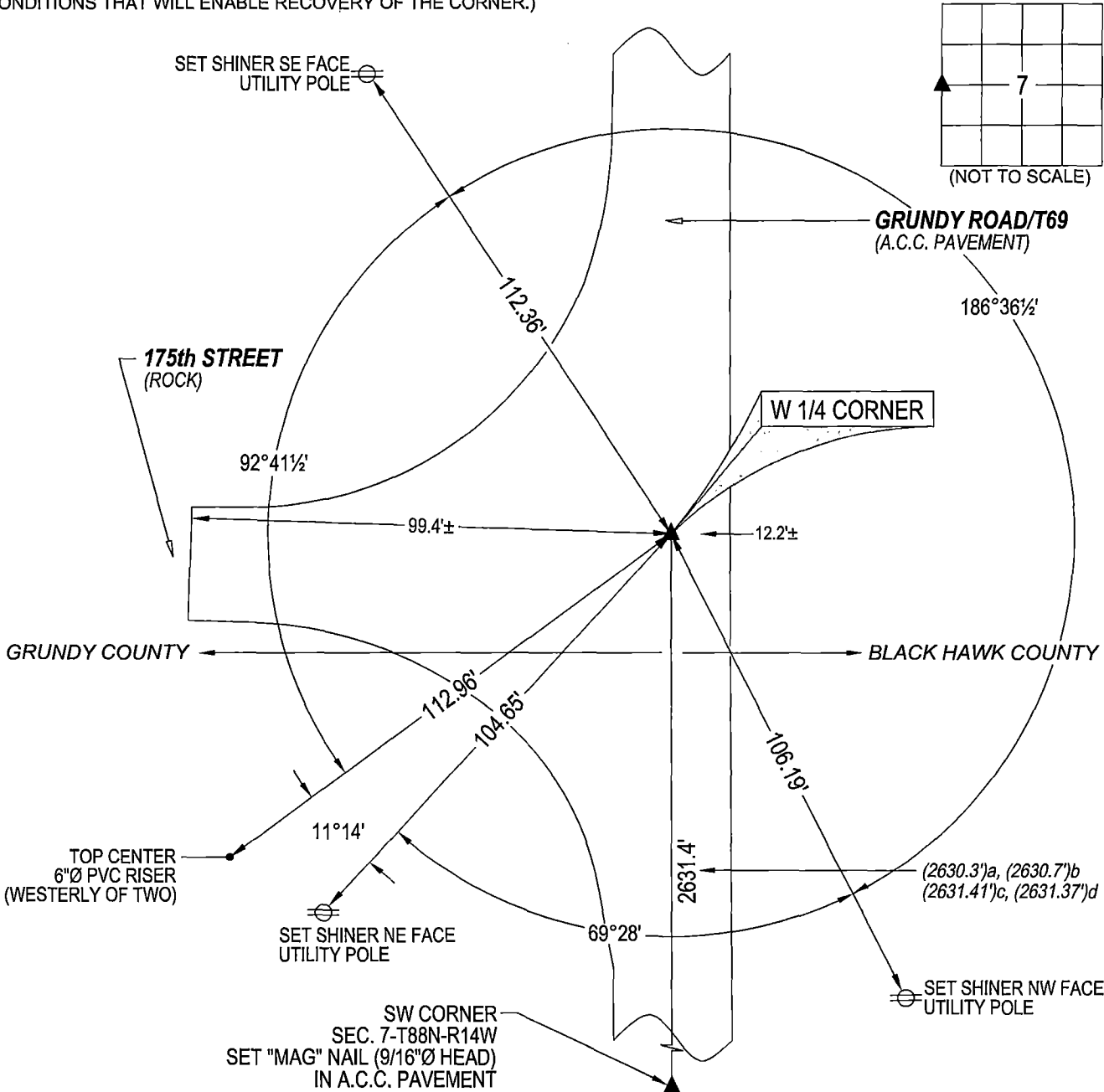
LAND SURVEY MONUMENTS SITUATED IN SECTION NO. 7, TOWNSHIP NO. 88 NORTH, RANGE
NO. 14 WEST OF THE FIFTH PRINCIPAL MERIDIAN, BLACK HAWK COUNTY, IOWA.
PREVIOUSLY RECORDED IN #202000001294.

(SHOW REASON FOR PREPARING THIS CERTIFICATE, THE EVIDENCE AND DETAILED PROCEDURES USED IN ESTABLISHING THE
CORNER POSITIONS AND MONUMENTATION FOUND OR PLACED.)

MONUMENT DESCRIPTION AND REMARKS:
SEE SHEET 1

PLAN VIEW

(SHOW A MINIMUM OF THREE REFERENCE TIES TO DURABLE PHYSICAL OBJECTS, RELEVANT MONUMENTS AND PHYSICAL
CONDITIONS THAT WILL ENABLE RECOVERY OF THE CORNER.)





HELLAND ENGINEERING & SURVEYING, LTD.
6109 Chancellor Drive
Cedar Falls, Iowa 50613-6916
(319)-266-0161

SHEET 2 OF 2

SHINER = 4d. NAIL & 1 5/16"Ø METAL SHINER
BRASS TAG = 4d. NAIL & 13/16"Ø BRASS TAG
OPC = PLASTIC CAP (O=ORANGE, R=RED, Y=YELLOW)
(00') RECORDED AS
DRAWN BY: JPH
FILE NAME: 22-264-22BH.DWG

LIST CORNERS TO BE INDEXED			
CORNER	SECTION	TOWNSHIP	RANGE
W 1/4 CORNER	7	88N	14W